



# FLAT STYLE FENDER FLARES

**PART NUMBER**  
**J102429**  
**FITS ALL JEEP**  
**WRANGLERS (TJ)**  
**FROM 1997-2006**

## KIT INCLUDES

- 2ea. Front Flares
- 2ea. Rear Flares
- 2ea. LED Marker Lights
- 4ea. Wire nuts

## HARDWARE KIT INCLUDES

- 30ea. M5 x 22 Black Phillips head machine screw
- 30 ea. M5 flange nuts
- 28 ea. Fender Washers
- 20 lf. Rubber Edge Trim

## REQUIRED TOOLS

- 8mm Wrench
- 8mm Socket Drive
- #1 Phillips Screwdriver
- Pliers or Prybar
- Electric Drill
- 1/16" Drill bit

## PRIOR TO INSTALLATION

- Read these instructions all the way through Before beginning the installation
- Make sure kit is complete before beginning installation
- Pre-fit all panels as you proceed with the installation.

## STEP 1. REMOVE THE FRONT AND REAR FACTORY FLARES

1. Start with the rear fender flare. Remove the rear wheel well liner by prying back the Christmas tree fasteners with a pry tool or pliers. Set liner and fasteners aside for re-installation.
2. Locate and remove the 8 factory bolts holding the factory fender flare.
3. Proceed to the front flares and disconnect the marker lights by twisting the bulb housing counter clockwise.
4. Locate and remove the 10 factory bolts holding the factory fender flare. Discard flares and hardware.
5. Remove 3 screws holding the rocker guard. Set the guard and hardware aside in a safe location as it will be reused.
6. Repeat steps 1-5 for the other side.

## STEP 2. INSTALL SUPPLIED MARKER LIGHTS IN FRONT FLARES

1. Place the marker light into the front flare light pocket. Using a 1/16" bit drill two pilot holes in the flare. **Fig a**
2. Using a #1 Phillips head screw driver screw the marker lights to the flare with the supplied screws. Repeat for the other front flare.

Drill pilot holes using 1/16" Drill bit



Fig a

**TIP:** Using a piece of masking tape (not supplied) tape the leads of the LED light against the back of the flare so it will not interrupt your installation.

## STEP 2. INSTALL RUBBER TRIM ON NEW FLARES

1. Locate the supplied "U" shaped rubber trim. Peel back 1" of the red lining. Starting at one end of the flare, push the trim onto the edge of flare. NOTE: Make sure the red lining is on the inside of the flare. FIG 1 and 2
2. Continue pressing the rubber trim on to the flare in 6" increments. FIG 3
3. Peel back 6 inches of the red liner and press the trim to bond to the flare. FIG 4 Continue in this manner until you have gone completely around the flare. When you reach the end cut the trim to length. Repeat this process for the remaining flares.

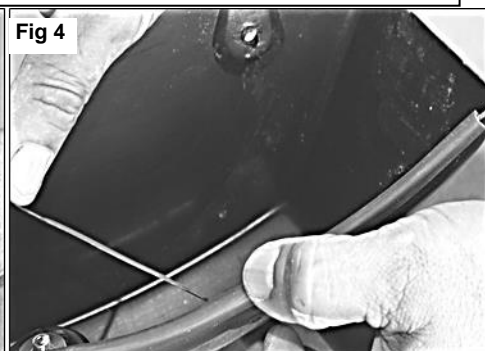
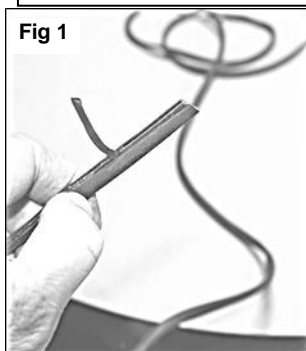


Fig 1

Fig 2

Fig 3

Fig 4

Fig 1

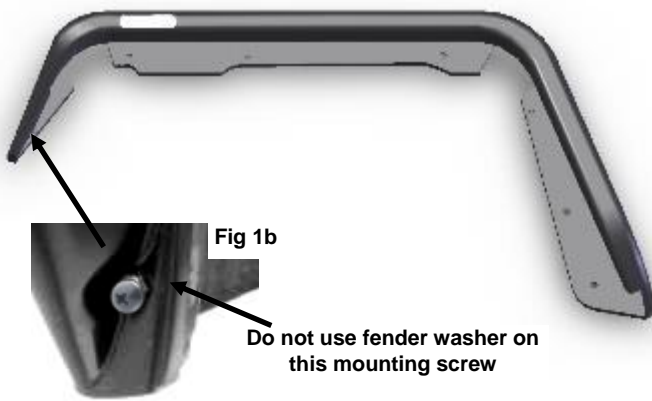
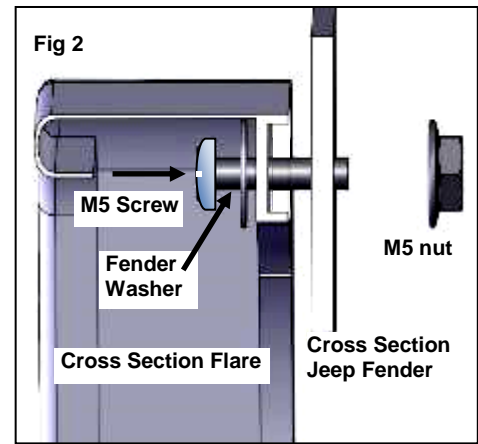


Fig 2



### STEP 3. INSTALL NEW TAG TRAILDRIVER FLAT FLARES

Start with the front Flares. Once both are completed proceed to the rears.

1. Hold your New TAG Flat flare against the Jeep fender. Line up the holes in the fender with the holes in the Flare. Starting at the bottom front of the flare push an M5 x 22 screw through the hole in the flare and start a flange nut on the inside of the fender. **NOTE:** Do not use a Washer on this mounting hole. **Fig 1 and Fig 1b**

**IMPORTANT:** Do not tighten any screws at this time.

2. Proceeding towards the rear of the flare Install one Flat Fender Washer and one M5 screws through the mounting hole in the flare onto the screw from the back side of the flare. Push the screw through the hole in the fender and start a flange nut. **Fig 2**

**NOTE:** Use the screws without the nuts in places that have a threaded insert in the Jeep body

3. Once the screws are all installed reposition the flare onto the fender for best fit. Fix any areas where the trim may be bunched or pinched. When satisfied with the position of the flare proceed to tighten the nuts.

**CAUTION:** To Prevent Stress cracks in the Plastic Do Not Over Tighten Screws

4. Re-install the Wheel liner by using the factory Christmas tree fasteners removed in **Step 1.1** on other side of page.
5. Repeat steps 1-4 to install the other side.

### INSTALLING REAR FLARES

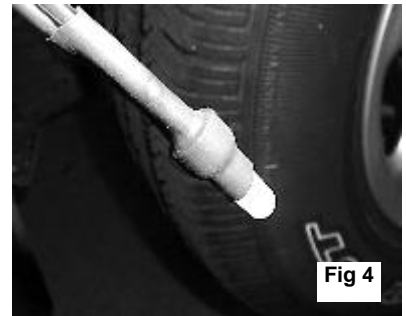
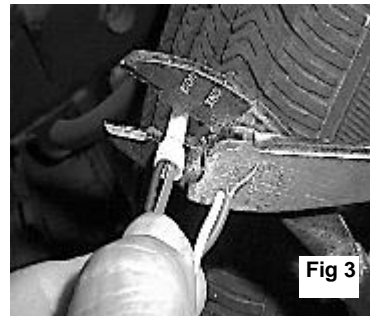
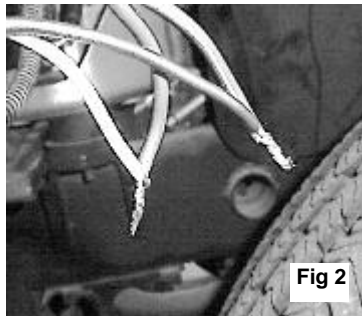
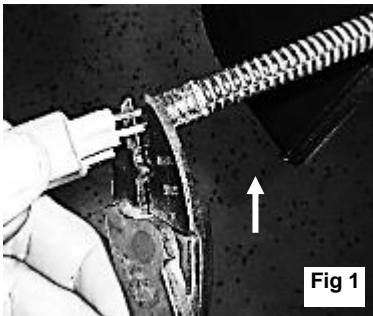
1. **INSTALL REAR FLARES** by Repeating steps 1 through 5 above.

**NOTE:** Install the Flare marked with an L on the Driver's side and the flare marked with an R on the Passenger side.

### FINISHING THE INSTALLATION

1. Optional-Re-Attach Factory Rocker Guards to the Jeep using factory hardware previously removed in **Step 1.5** on other side of page.

**NOTE:** You will need to drill new mounting holes in the guards to get them to sit snugly against the new Flares. To do so place the guard snugly against the new Flat flare and mark the guard with a white china marker where the hole in the Jeep fender appears.



### STEP 4. CONNECT MARKER LIGHTS

Once the flares are installed complete the installation by connecting the Turn signal wiring

1. Cut the two wires at the base of the factory turn signal light housing. **Fig 1**
2. Strip back the insulation and twist the factory wiring onto the wiring in the supplied marker light. **Fig 2**
3. Turn on the light to test if it is correctly wired. If it does not turn on reverse the wires.
4. Once the light is tested and working crimp a supplied wire connector onto each lead. **Fig 3**
5. Seal the connection with a small piece of heat shrink tube (not supplied).  
**NOTE:** If you don't have a heat gun, shrink the tube using a hair dryer. **Fig 4**
6. Repeat steps 1-5 for the other side.