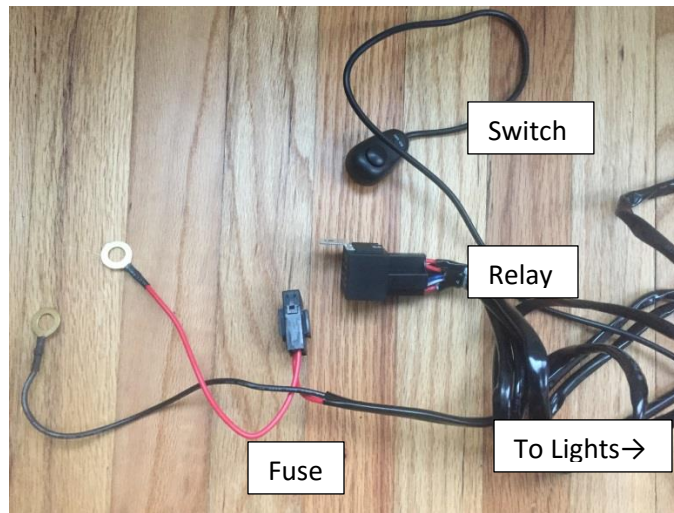


Raxiom 7.5 in Double Row LED Light Bar Installation Guide

Installation Time: 30 minutes

Tools Required:

- ✓ Socket wrench – 9/16
- ✓ Zip ties - 10 to be safe
- ✓ Electrical tape
- ✓ Pliers
- ✓ Wiring kit (can be purchased through Extreme Terrain [here](#))
- ✓ Male attachment for LED wiring
- ✓ Allen Wrench – provided



Wiring kit

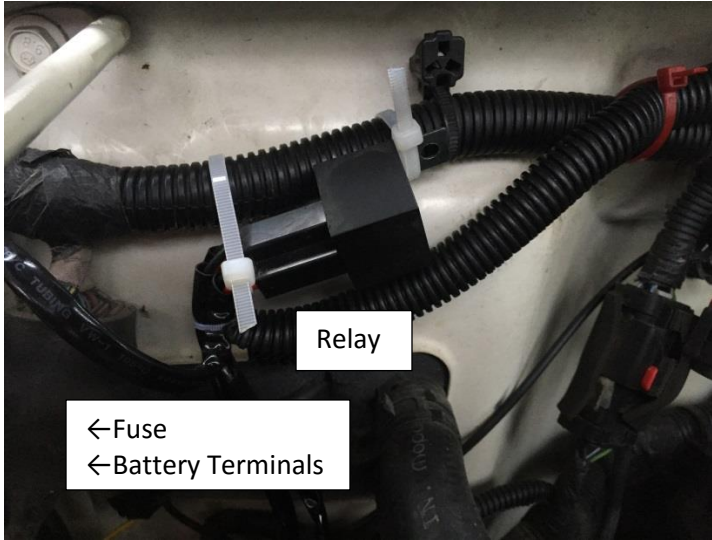
Installation Instructions:

1. Instruction one
Mount your LED – if you need to drill holes for the LED then you will also need a drill bit for an 8mm bolt
I chose to mount my LED on my front bumper – use 9/16 socket to tighten.



2. Fit the relay – you will want to fit this close to your power supply. Attach the relay either by zip tie or use a non-painted screw that is already in your engine compartment.

I chose to zip tie my relay to a loom just above the battery



3. Route your lighting wires to the location you are going to mount your LED



From the relay to LED



Wires leading from relay to LED (cleaned up)



Wires leading through the bumper to the LED

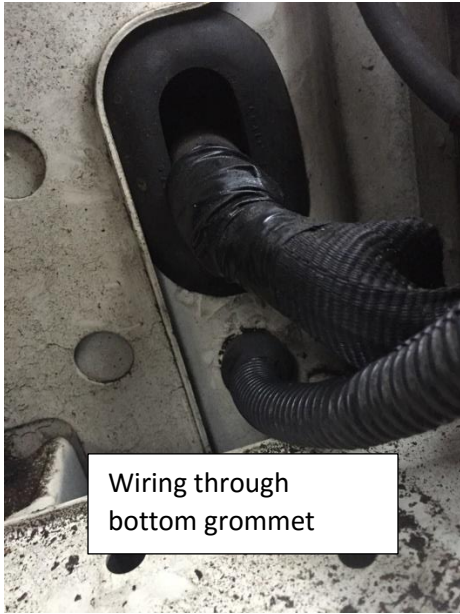
4. Route your wires from your relay through your firewall – I passed mine through a grommet on the driver's side.
Secure the wires with zip ties (secured here by red zip tie and inside black wiring loom (optional)).



↑ Relay

← Wiring to grommet ↑

← Grommet



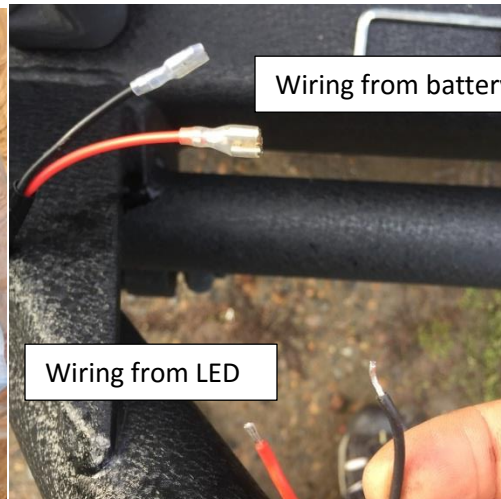
Wiring engine to cab on driver's side



wiring from engine behind clutch pedal - leading to switch

Feed your wires through the grommet secure the grommet back into its original place.

5. Attach your male attachments to the wiring from LED – fit them in and then crimp them down with your pliers – they should be snug and unable to be pulled off.



6. Attach your LED to your wiring from the battery

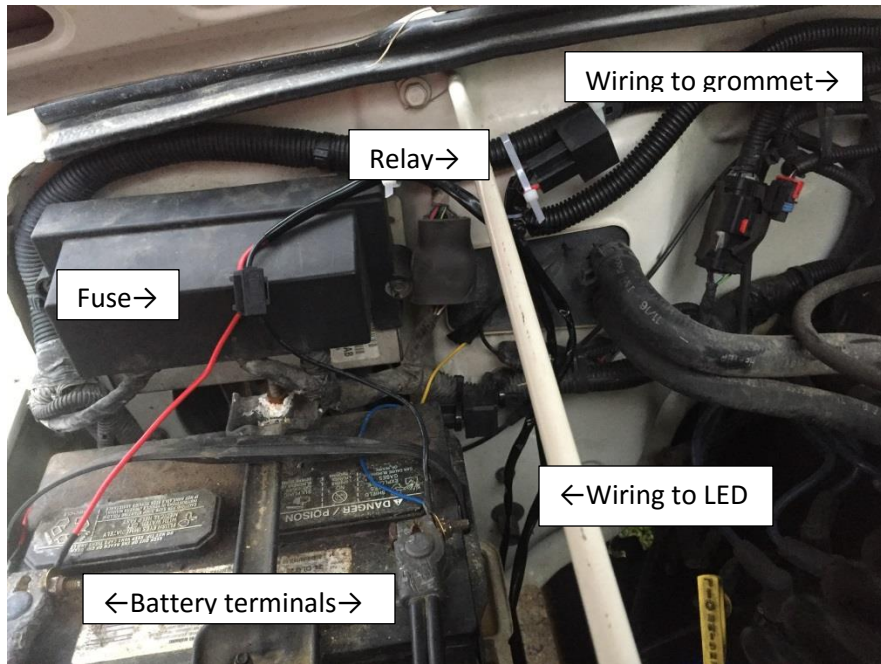


7. Clean up the wires

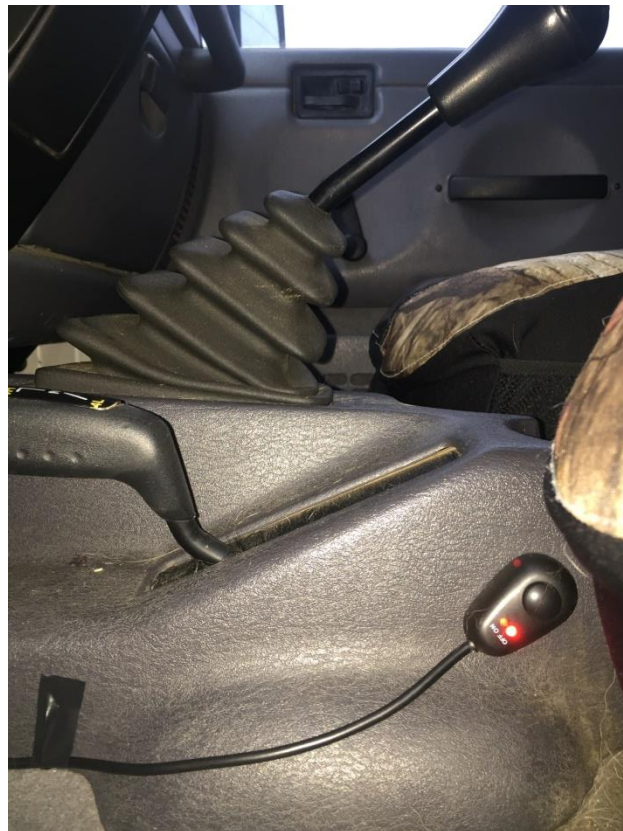
Make sure all wires are in a secure location.



8. Attach your fuse to your battery terminals– make sure to attach positive first and ground second.



9. Now that everything is in place and snug you can attach your switch anywhere you would like. The one I have has a sticky side so I am able to stick it near my 4x4 shifter



10. Turn it on – it should be good to go.



Installation Instructions written by Extreme Terrain Customer Scott Light 12/3/2016