



---

# ENHANCED RUBI RAIL

(2007-2018 WRANGLER JK)

---

## INSTALLATION INSTRUCTIONS

### Contents

---

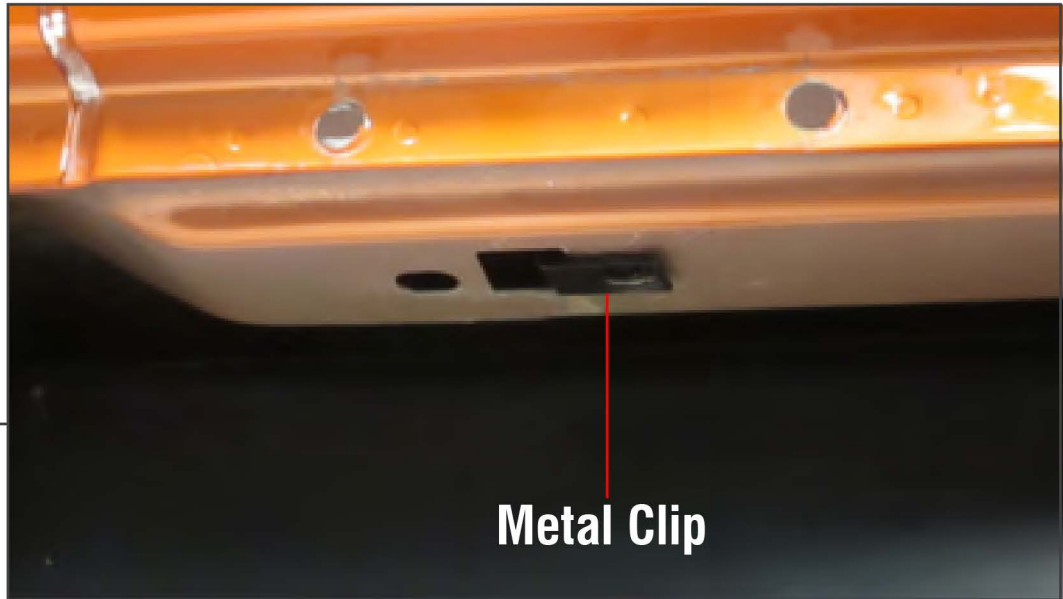
- (2) Rocker Rails
- (4) Threaded Clips
- (8) Lock Nuts (2-Door)
- (12) Lock Nuts (4-Door)
- (8) Washers (2-Door)
- (12) Washers (4-Door)

### Tools Required

---

- Metric Socket Set
- Open End Wrench Set

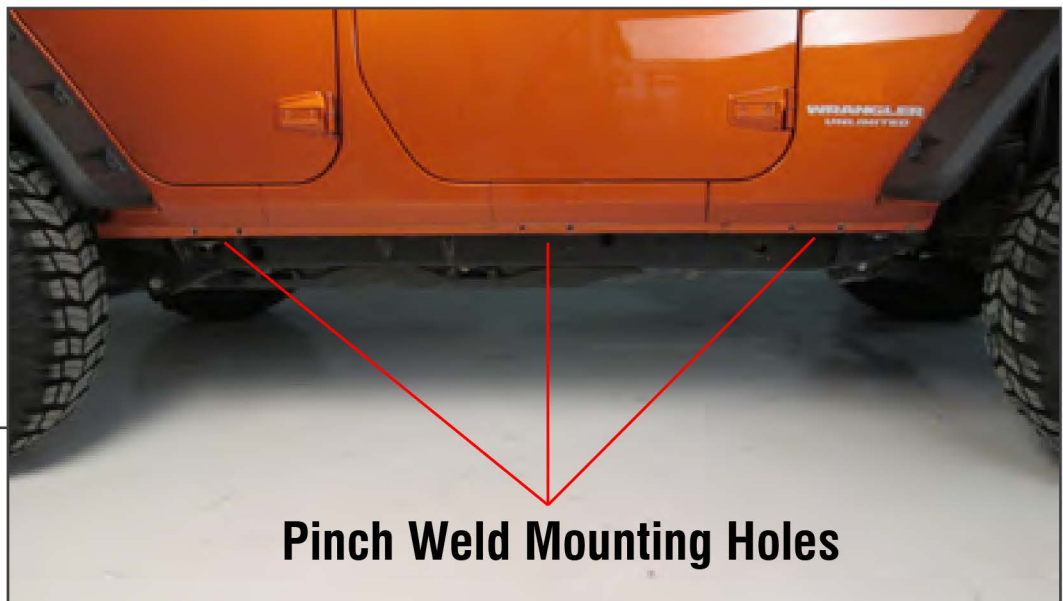
**STEP 1A**



**Metal Clip**

Begin by installing (2) threaded metal clips on the underside of the body.

**STEP 1B**

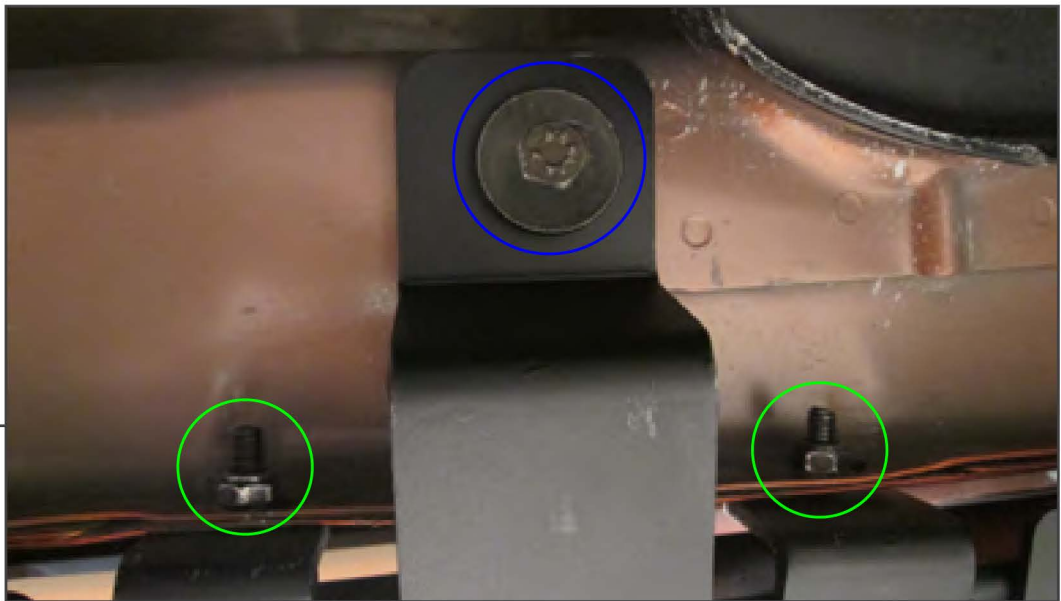


**Pinch Weld Mounting Holes**

The metal clips are located directly behind each pair of pinch weld mounting holes. (4-door Wranglers only need (2) clips on the front and middle locations).

**STEP 2**

Before attempting to install, make sure you have the correct rail for each side. The front and middle mounting locations are offset towards the front of the rail/vehicle, this should help you figure out left and right. Pinch welds consist of multiple layers, which are pre-cut before assembly, and can line up differently on each vehicle. If you experience and slight fitment issues, it is sometimes helpful to bore out the mounting holes with a drill bit for extra clearance. Be sure to treat any exposed metal after drilling to prevent corrosion.

**STEP 3**

Once the rail is seated properly in each location, secure the pinch weld studs, marked in green, first with the supplied washers and lock nuts. Once the rail is aligned and secured along the pinch weld, install the supplied bolts, marked in blue. (2) bolts per side for 2-doors, and (3) bolts per side for 4-doors.