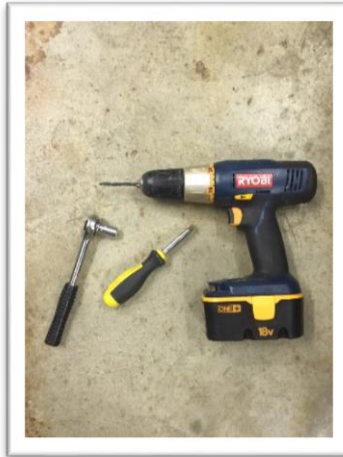


**Wild Boar Aggressive Flare Grille**  
**(Item # J100476, Wild Boar 11022G)**

**Installation Time:** 1 Hour

**Tools Required:**

- ✓ Ratchet & 3/8 Socket
- ✓ Drill & 13/64 Drill Bit
- ✓ Flat Head Screw Driver

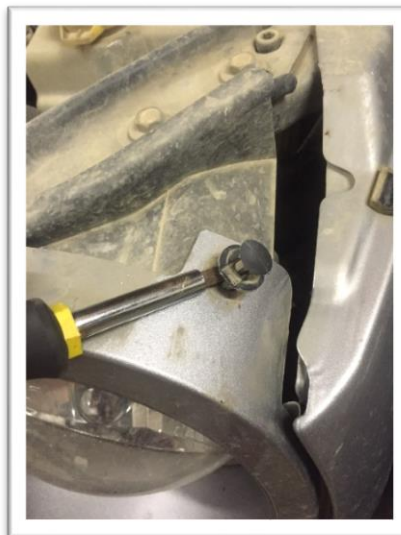
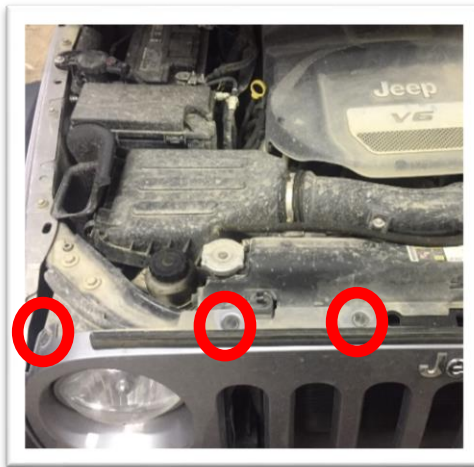


**Inside the Box:**

- ✓ Wild Boar Grille
- ✓ Weather Strip
- ✓ Self-Tapping Screw

**Installation Instructions:**

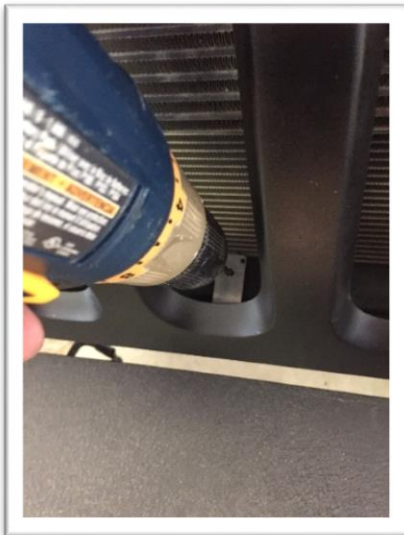
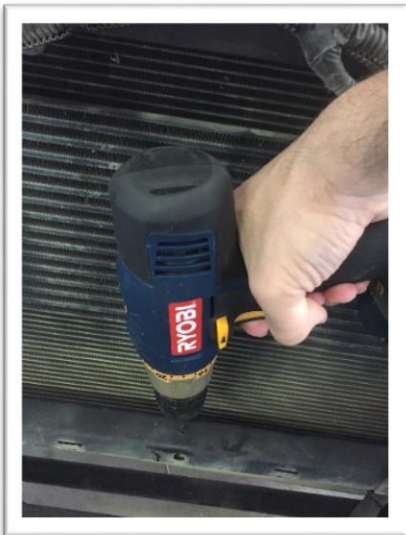
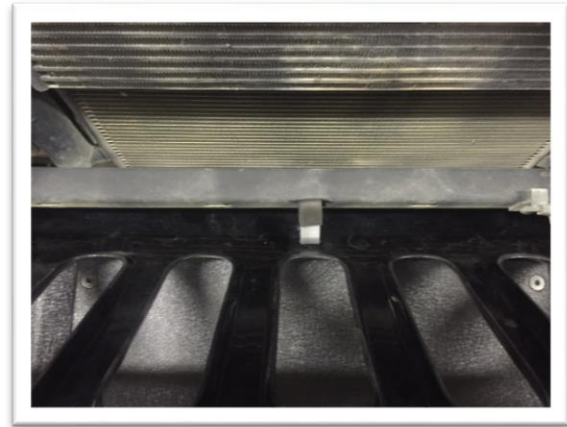
1. Open the hood. Begin removing the six upper plastic clips that secure the grille.



2. Disconnect the turn signals on the grille. Then pop the lower part of the grille loose from the chassis.



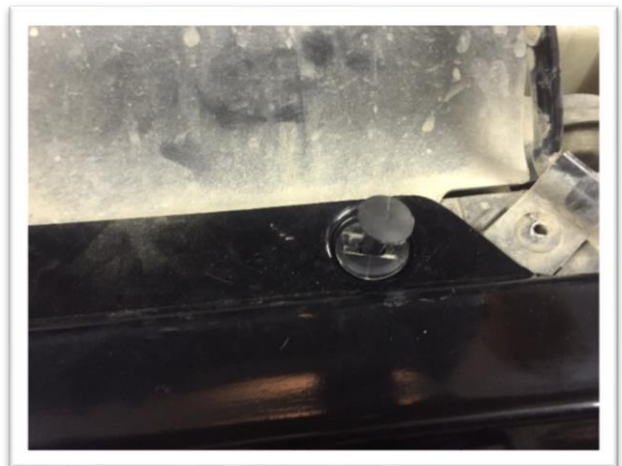
3. Place the Wild Boar Grille onto the Jeep to mark the place on the chassis and the grille that will be drilled. Remove the Wild Boar Grille and drill a hole in the chassis where the mark was made. Then drill the hole into the grille.

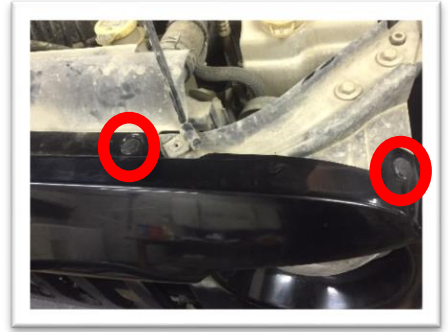
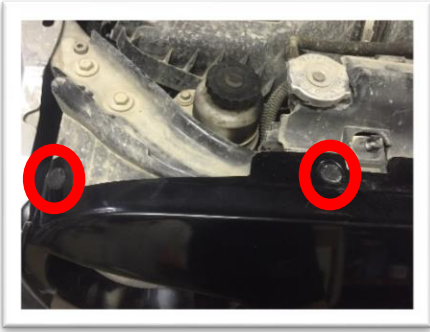


4. Install the turn signals onto the Wild Boar Grille.

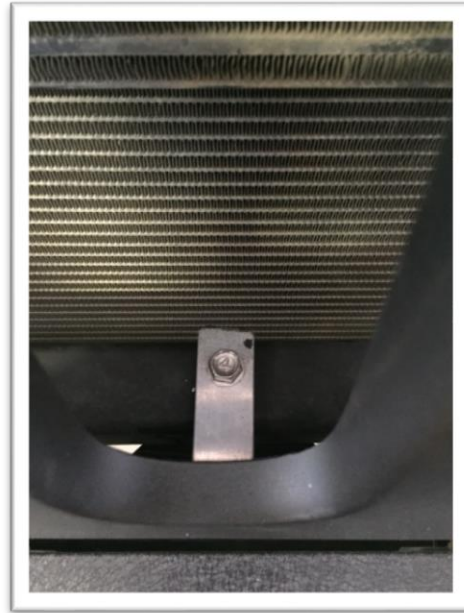


5. Place the Wild Boar Grille back onto the Jeep and insert the six plastic clips into the grille and upper cross member.





6. Insert the self-tapping screw into the Wild Boar Grille and into the chassis.



7. Install the weather stripping to the top of the grille.



8. Installation Complete!



Installation Instructions Written by ExtremeTerrain Customer Lazaro Gomez 01/17/2016