

1997-2006 Jeep Wrangler TJ 2 Pc. Hardtop with Full Doors Installation Instructions



PLEASE READ CAREFULLY BEFORE STARTING INSTALLATION

To safely lift and install this hardtop, you will need the assistance of at least one other person.



WARNING

The top on this vehicle is designed only for additional protection against the elements.

Do not rely on the top to contain occupants within the vehicle or to protect against intrusion of foreign objects, nor injury during an accident.

Make sure all brackets and screws are tight. Periodically check for tightness and retighten when necessary.



WEAR SEAT BELTS AT ALL TIMES

Parts included in the installation kit.

6 each	Bolt 5/16 x 18 x 1 1/4
6 each	Nut 5/16 x 18
9 each	Washer 5/16
3 each	Wing Nut 5/16
3 each	Side Brackets
1 each	Center Bracket
2 each	Tape

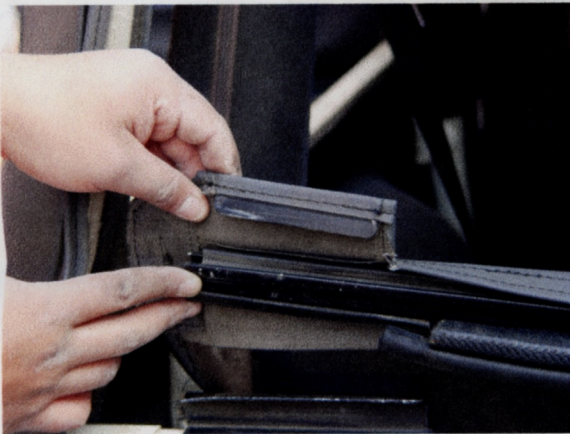
TJ 2 Piece Full Door Installation Instructions



1 Unzip side windows and remove.



2. Unzip rear window and remove.



3. Pull back bar off and remove.



4. Pull down on corners and disengage.



5. Pry open side connections with screwdriver



6. Remove side connections to door frame.

SLT



7 Disengage soft top from windshield.



8. Pull back soft top.



9. Remove bolt from soft top frame.

15. Do not remove front corner seal.



10. Pry off soft top frame from roll bar



11 Remove soft top.

16. Sit in the front seat. Make sure the windshield stop is not hung up on the molding. It should look like this.

17. Sit in the front seat. Make sure the windshield stop is not hung up on the molding. It should look like this.



12. Unscrew door pins & remove frames.



13. Remove rear bar holders.



14. See pre-installation instruction sheet.



15. Do not remove front corner seal.



16. Using 2 or more people put the rear section on, followed by the front section. Do not put bolts in yet.



17. Sit in the front seat. Make sure the windshield stop is not hung up on the molding. It should look like this.



19. Make sure the front section is centered on the windshield. Look at the corners, make sure they are even, driver and passenger side.

Next engage the front cam locks



21. Install the center brackets, there are 2 of them. they look like this when done. tighten lightly

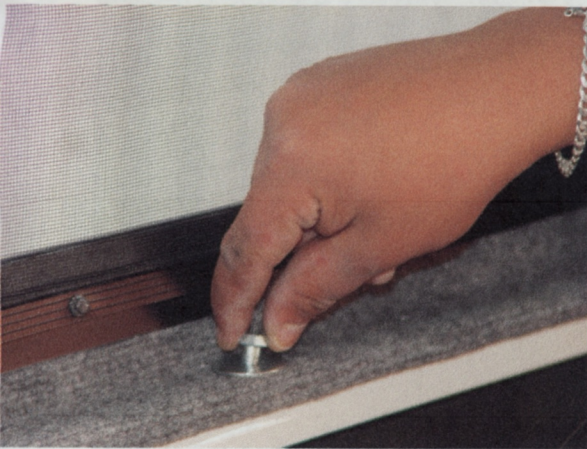


bolts using the washers and nuts
tighten the bolts down lightly

20. Install the side clamps, using the washers and wing nuts. The clamp should be installed with the 90 degree angle facing the back and inward. Do not tighten.



21 Install the center brackets, their are 2 of them. they look like this when done. tighten lightly



22. Now that the front section is in the proper position. Install the side flange bolts using the washers and nuts. tighten the bolts down lightly



23. Pull out hardtop flush to the body and tighten rear bolt.

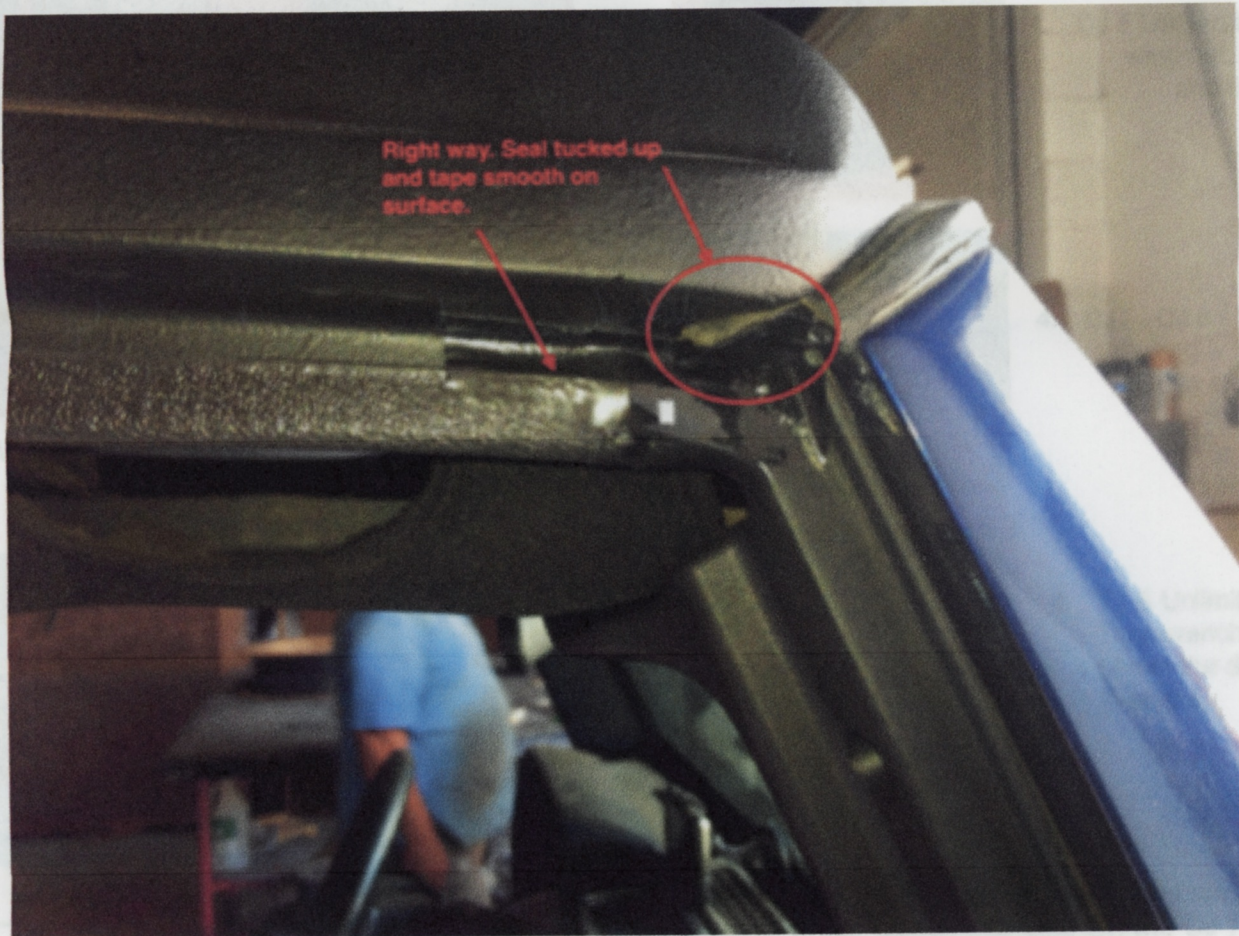
Your Done.....Enjoy



24. Pull out the front flush to the body, tighten bolt. Now tighten the remaining bolts



23. It should look like this after the flange bolts are tighten. you can make adjustments by moving the back section front to back.



22. Make sure the seal is pushed up into the hardtop. Then in-stall the factory supplied tape. If it's a reinstall then use a piece of electrical tape. To insure the joint between the hardtop and the windshield plastic is smooth and flush.

Your Done.....Enjoy

Jeep Pre-Installation Instructions



Place your tape on top ledge of the windshield.



2. Extend the tape to the rear of the body.



3. Where the tape hits the body, it should read the value in the chart below. Measure both sides. If it does, put the top on. If not, go to step 4.



4. CJ 5 Loosen the bolts and wing nut. Adjust windshield and tighten.



4. CJ7 - CJ 8 - YJ Loosen bolts using a T40 torx wrench. Go to step 5.



4. TJ & Unlimited Using a T40 Torx wrench, loosen the bolt above the doors hinge. Go to step 5.

CJ 5 (1972-1975)	70 3/4"
CJ 5 (1976-1983)	67 1/4 "
CJ 7 & YJ	75 1/8"
CJ 8	97 11/16"
TJ	75 1/8"
Unlimited	89 7/16"

5. Using a T50 tamper resistant Torx wrench or vise-grips, loosen this bolt. On the CJ 7 & YJ's it's on the top of the roll bar. On the TJ & Unlimited it's on the side of the roll bar. This will be a 2 person job. One checks the measurement, the other person tightens the bolt. Remember 75 1/8" on both sides. (Unlimited 89 7/16"). Once this is accomplished, tighten up the bolt you loosened in step 4. Now you can put your top on. If the windshield is properly adjusted, the space between the windshield and the door should be the same on both sides.