



# FRONT FENDER Installation Instructions PART NUMBER J100300 FITS JEEP YJ

KEY TO COMPONENTS	TOOLS NEEDED
A. 1 ea. Driver side fender	Ratchet
B. 1 ea. Passenger side fender	13mm socket
C. 10 ea. M6X1.0X20mm Button head	7mm socket
D. 10 ea. M6X1.0 Nylon lock nut	4mm Allen wrench
E. 24 ea. M6X1.0 Flat washer	Grinder
F. 6 ea. M10x 1.5x 25mm Hex head bolt	5/16 & 1/4 Drill bit
G. 6 ea. M10X1.5 Flat washer	16mm socket
H. 6 ea. M10x 1.5 Nylon lock nut	17mm socket

A



C



D



B



E



F



G



H



Please take a few minutes to read and thoroughly familiarize yourself with the installation procedures outlined in this manual. Following the steps as outlined will save you time and help reduce mistakes. Once the instructions are reviewed, if you feel that you are not capable of safely installing the parts seek the help of a qualified installation expert to help you complete the job. The manufacture is in no way responsible for any personal injury or vehicle damage that may occur during the installation.

## NOTES ON INSTALLATION

Please read and understand all instructions prior to beginning the installation process.

Pre-fit all panels as you proceed with the installation before attempting to bolt into position. This will enable you to understand exactly how the part is intended to fit onto vehicle.

Do NOT over-tighten screw.

If the instructions call for you to save and re-install parts set them aside in a protected area so as not to damage them.

## FACTORY FLARE REMOVAL

Note: Installation is shown on Passenger side of Jeep.



Step 1  
Remove factory flare from your vehicle. Discard flare and hardware.

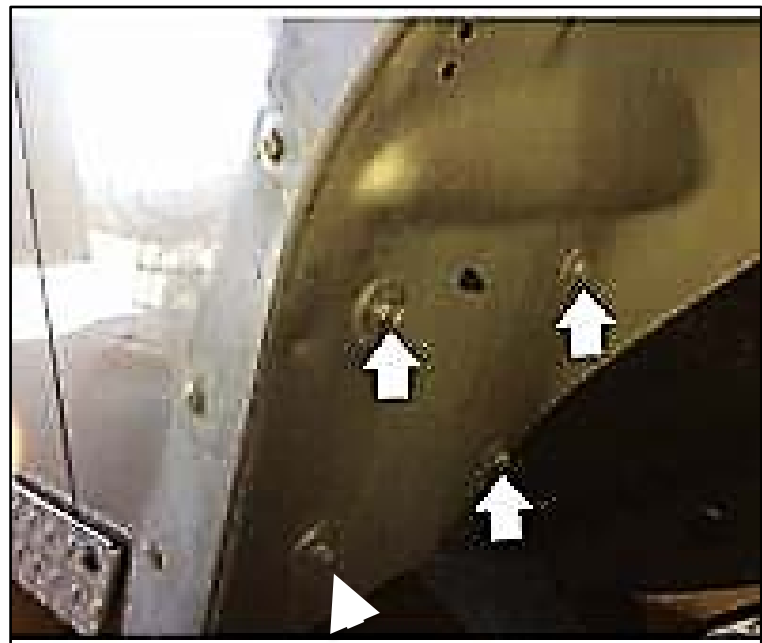
Note:  
If equipped with factory side step remove and set aside for reinstallation.

Step 2  
Twist and unplug the signal lights from the fender. As shown above.

## PREPARING THE JEEP FOR INSTALLTION



Step 3  
Proceed to the front side of the fender well. Using a 13mm socket, remove 3 bolts from underneath the side fender as shown above. Set aside hardware for later use.



Step 4  
Proceed to the rear side of the fender well. Using a 13mm socket remove 4 bolts from the rear fender. Set hardware aside for later use.

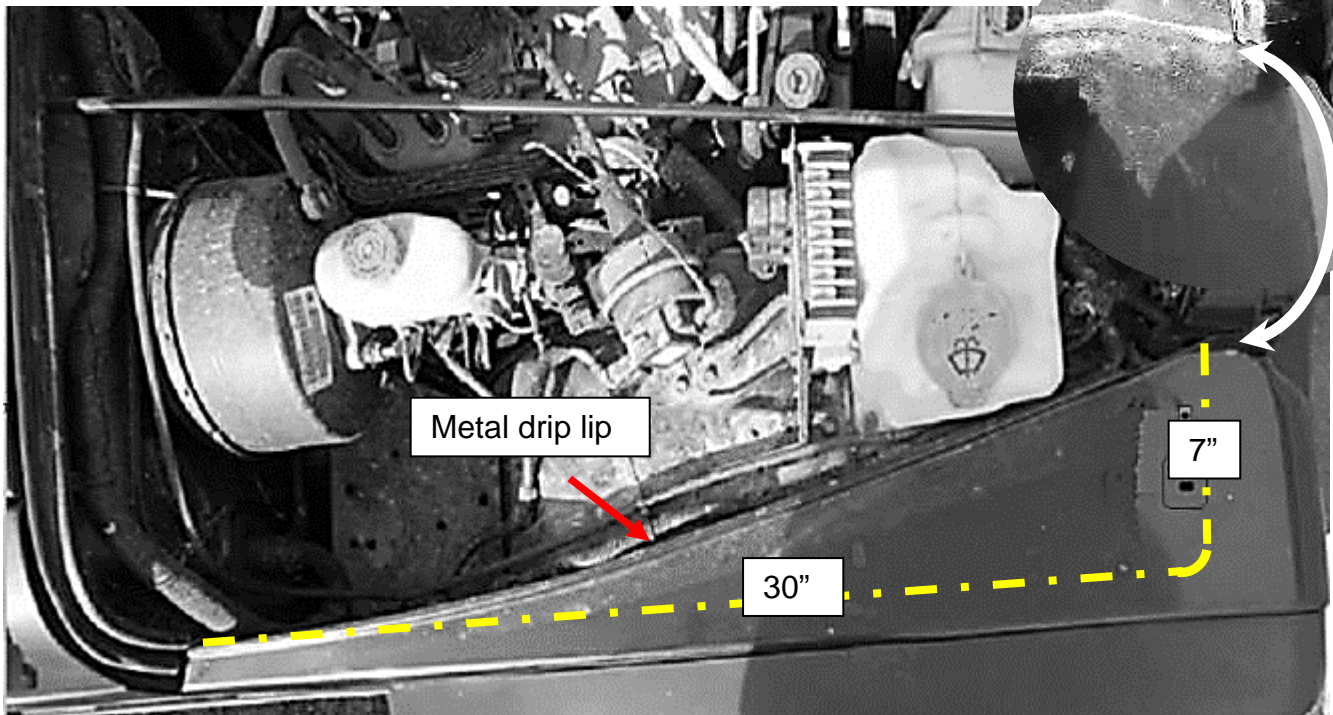
## PREPARING THE JEEP FOR INSTALLTION continued



Step 5  
Remove factory bolts securing hood latch to factory fender. Set aside hardware and hood latch for reinstallation

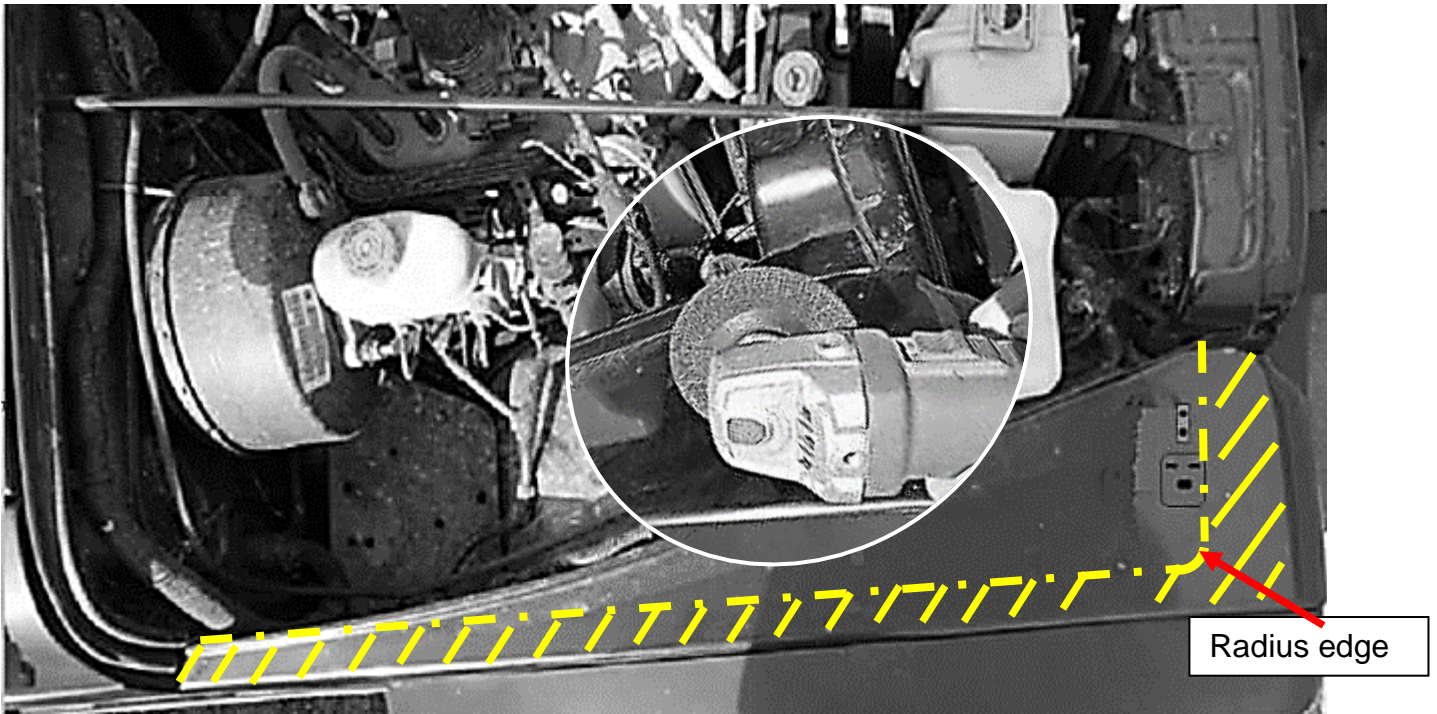
Step 6  
Pry off the rubber cushion. Set aside for later use.  
(Step not illustrated)

## PREPARING FENDER FOR INSTALLTION



Step 1  
Note the metal drip lip on the inner side of the fender. Draw 7" long line from the front edge of the lip out towards the outer edge of the fender. This will be your starting point. Draw a 30" long line toward the back of the fender. These lines represent where you will cut away your factory fender.

PREPARING FENDER FOR INSTALLTION continued



Step 2

Using an electric grinder or similar metal cutting tool proceed to cut the fender where you marked the lines.  
*Tip: Make sure to radius the front edge to avoid any sharp corners that could result in a nasty cut.*



Step 3

Once you cut the OE fender, bend it outward and cut off the remaining part of the fender along the rear edge of the fender as shown above.



Step 4

With the fender now cut off, locate four factory bolts that connects the inner fender. Using a 13mm socket, remove the four bolts. Discard factory fender save bolts for later use.

## PREPARING FENDER FOR INSTALLTION continued



Step 7  
When the cut metal parts are all removed, your modified fender should look like the picture above.

## INSTALLING NEW FENDER



Step 1  
Place the new fender on to the jeep.  
Note: If the new fender does not seem to fit grind excess material from the original fender.

## INSTALLING NEW FENDER continued

### Step 2

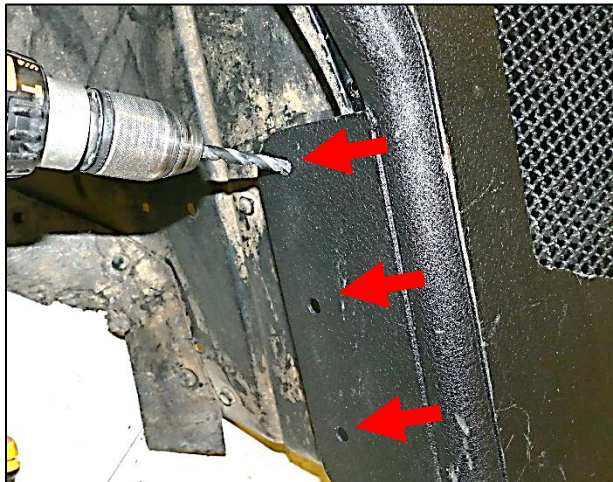
Note: Since we are illustrating the passenger side fender you will need to remove the factory battery so you have access to the back wall of the fender. **Fig A**

Fig A



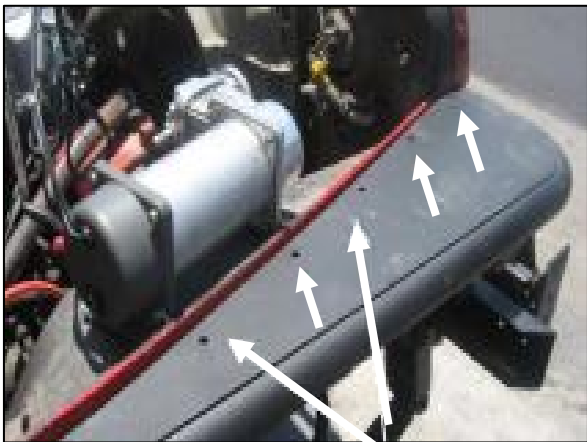
### Step 3

With the battery removed you now have access to the back wall of the fender. Using a 13mm socket, reinstall four factory bolts that run vertically on the inner fender.



### Step 4

Using the holes in the new fender as a guide drill 3 holes using a 3/8" bit through the factory sheet metal. Install supplied Mounting bolts (F) washers (G) and lock nuts (H).



### Step 5

Using the holes in the new fender as a guide Drill Five (5) 1/4 inch holes through the factory sheet metal.



### Step 6

Place a button head bolt M6x1.0x20mm (C) with supplied flat washer M6X1.0 (E) through the fender hole and through drilled holes. Start a supplied nylon lock nut M6X1.0 (D) at the end of the bolt. Tighten nuts with 10mm socket.

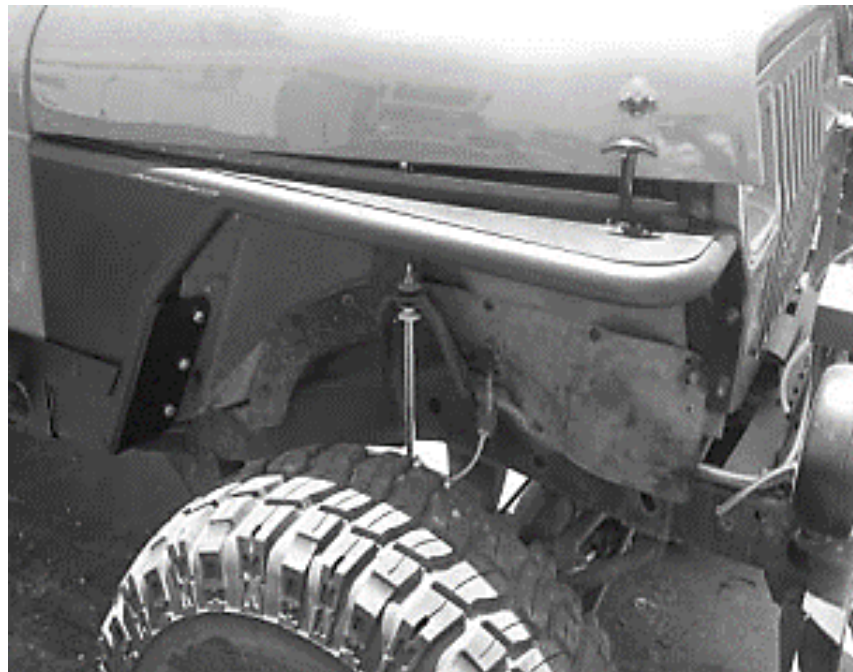
## INSTALLING HOOD LATCH



**Step 5**  
Working on the underside of the fender, Use the holes in the factory fender as a guide to drill holes to re-install the hood latch and rubber stop.



**Step 7**  
Reinstall factory hood latch and rubber cushion using factory hardware.



This completes your installation.