



**Installation Instructions
Rocker Guard With Steps
97-06 Jeep Wrangler TJ
PART# J100294**

Please read and understand all instructions before starting the installation. The manufacturer is in no way responsible for any personal injury or vehicle damage that may occur during the installation or use of this product. **CAUTION:** This product is designed primarily to enhance the appearance of this vehicle. Do not rely on it in any way to protect against injury or death in the event of an accident.

TOOLS REQUIRED:

- 16mm Socket Wrench
- 13/32 Drillbit & Drill
- 6mm Allen Wrench
- 17mm Wrench
- Jack
- Clamps

INCLUDED COMPONENTS

- (2) Rocker Guards
- (12) M10x1.5 Screws
- (12) M10 Nylon Lock Nuts
- (12) Washers



STEP 1

BOLT REMOVAL

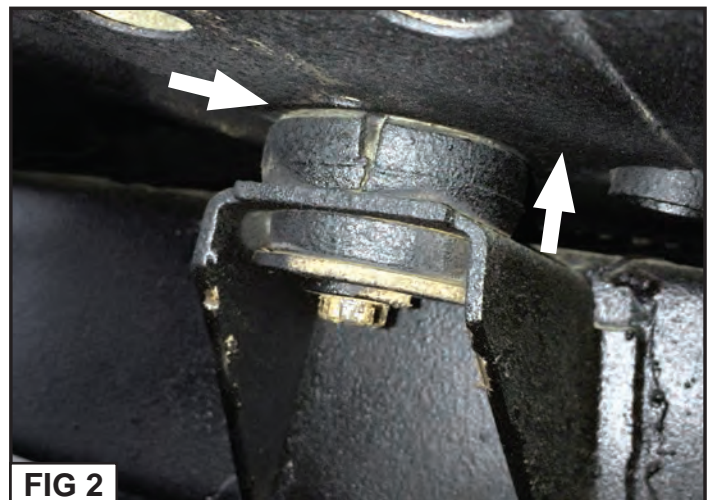
1. From underneath the vehicle locate the two rear brackets on the frame where the body mounts to the frame, loosen the bolts with a 16mm socket (there are three brackets on each side but only loosen the rear two),. Repeat this on the other side of the vehicle shown in Fig 1.



STEP 2

PRODUCT INSTALLATION

2. Place a floor jack underneath the body portion of the vehicle and jack up the body, this will make a small gap between the body of the vehicle and the frame/body mounts shown in Fig 2.



**Installation Instructions
Rocker Guard With Steps
97-06 Jeep Wrangler TJ
PART# J100294**

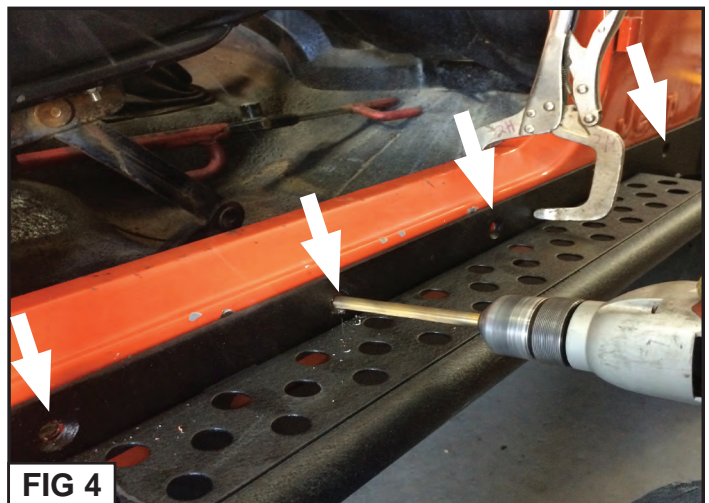
**STEP 3
PRODUCT INSTALLATION**

3. Take the rocker guard and locate the horizontal plate along the inside of the rocker guard, it will have two notches in it. Slide the notches between the body (shown in Fig 3) of the vehicle and the body mounts that you loosened in step 1.



**STEP 4
DRILLING**

4. With the notches in between the body and the body mounts take a set of clamps and clamp the upper vertical inner edge of the rocker guard flush with the side of the vehicle. Locate the holes in the vertical edge of the rocker guard, take a 13/32" drill bit and drill and drill a hole through the vehicle body where the holes are located shown in Fig 4.



**STEP 5
SCREW INSTALLATION**

5. Place the M10x1.5 Screws through the Drilled Holes using a 6mm Allen Wrench and place the Washer and Nylon Lock Nut from behind (shown in Fig 5) to thread the M10 Screw in place using a 17mm socket (repeat for the remaining holes). Repeat steps 1-5 on the other side of the vehicle.

Installation complete.

