



92RC60900

**ROUGH
COUNTRY**
SUSPENSION SYSTEMS

JEEP YJ REPL BODY BUSHING / 1" BODY LIFT KIT

Thank you for choosing Rough Country for all your suspension needs.

**This body lift fits both manual and Automatic equipped vehicles!!!
Refer to Instruction sheet for auto trans bracket installation**

Rough Country recommends a certified technician install this system. In addition to these instructions, professional knowledge of disassembly and reassembly procedures as well as post installation checks must be known. Attempts to install this system without this knowledge and expertise may jeopardize the integrity and/or operating safety of the vehicle.

Please read the instructions before beginning the installation. Check the kit hardware against the Kit Contents shown. Be sure you have all needed parts and know where they go. If there are any questions about the installation or installation steps call our tech line at 800-222-7023.

PRODUCT USE INFORMATION

As a general rule, the taller a vehicle is, the easier it will roll. Offset, as much as possible, what is lost in rollover resistance by increasing tire track width. In other words, go "wide" as you go "tall". Many sportsmen remove their mud tires after hunting season and install ones more appropriate for street driving; always use as wide a tire and wheel combination as possible to enhance vehicle stability.

Seat belts and shoulder harnesses should be worn at all times. Avoid situations where a side rollover may occur. Generally, braking performance and capability are decreased when significantly larger/heavier tires and wheels are used. Take this into consideration while driving. Do not add, alter, or fabricate any factory or after-market parts to increase vehicle height over the intended height of the Rough Country product purchased. Mixing component brands is not recommended. Rough Country makes no claims regarding lifting devices and excludes any and all implied claims. We will not be responsible for any product that is altered.

If you have any questions concerning the design, function, and/or correct use of our products please contact one of our customer service representatives us at 800-222-7023.

NOTICE TO DEALER AND VEHICLE OWNER

Any vehicle equipped with any Rough Country product should have a "Warning to Driver" decal installed on the inside of the windshield or on the vehicle's dash. The decal should act as a constant reminder for whoever is operating the vehicle of its unique handling characteristics.

INSTALLING DEALER - it is your responsibility to install the warning decal and forward these installation instructions on to the vehicle owner for review. These instructions should be kept in the vehicle for its service life.

IMPORTANT PRE—INSTALLATION INSTRUCTIONS

Prior to beginning this installation it is always good to use a penetrating oil and spray all body mount hardware that will be removed. Typically the stock body bushings will need to be checked to ensure they are in good condition. If the stock body bushings are cracked or deteriorated they must be replaced. This should be performed as the body lift is installed. Failure to perform this maintenance could jeopardize the operating safety of the vehicle.

Tools Needed:

Floor Jack
Jack Stands
3/8" Socket / Wrench
1/2" Socket / Wrench
5/8" Socket / Wrench
13mm Socket / Wrench
19mm Socket / Wrench
Drill Motor
1/4" Drill Bit

**ROUGH
COUNTRY**
SUSPENSION SYSTEMS

KIT CONTENTS



Kit Contents :

- 6-Dr / Pass Side Body Bushings (A)
- 4-Rear Body & 1 Center Bushings (B)
- 2-Fr Core Support Brackets (C)
- 4-Radiator Shroud Brackets (D)
- 1-Auto Trans Bracket (E)

1-RC609Bag:

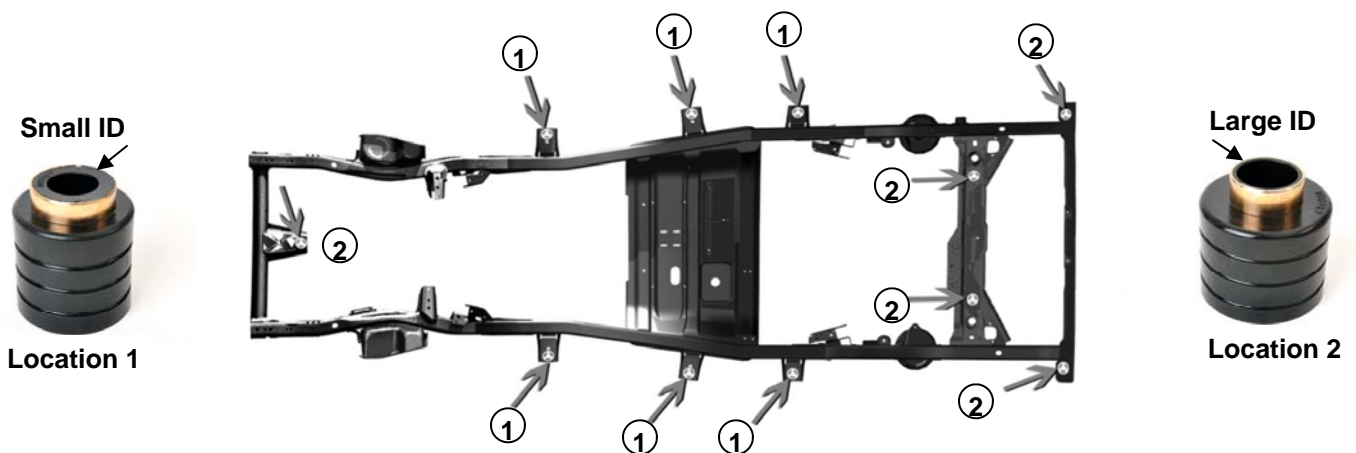
- 4-1/4" Self Clinch Stud
- 4-1/4" Washers
- 4-1/4" Lock Nuts
- 6-1/2" x 4 1/2" Bolts
- 6-1/2" Flat Washers
- 5-7/16" x 4" Bolts
- 5-7/16" Flat Washers
- 2-5/16" x 3/4" Self Tapping Bolts
- 11-Body Bushing Sleeves

1-1668Bag4: Auto Trans Brkt bag

- 2-1/4" x 3/4" Bolts
- 2-1/4" Lock Nuts

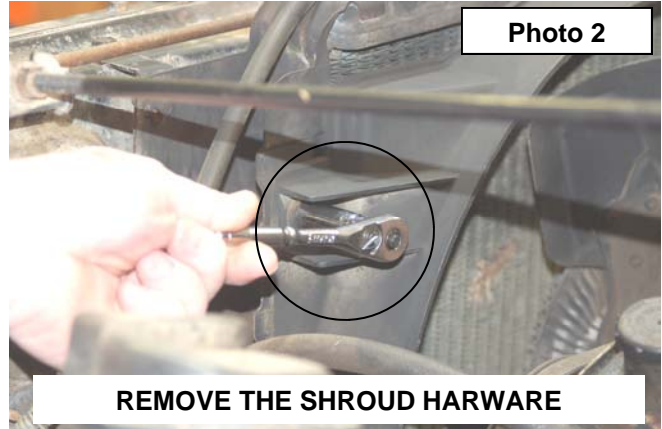
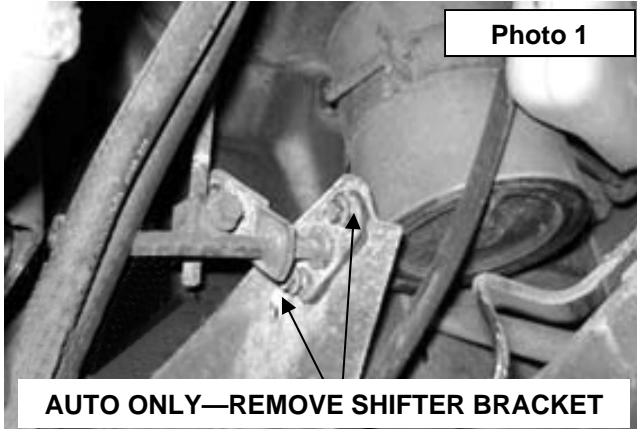
Please see diagram below for proper body lift bushing placement.

DIAGRAM 1

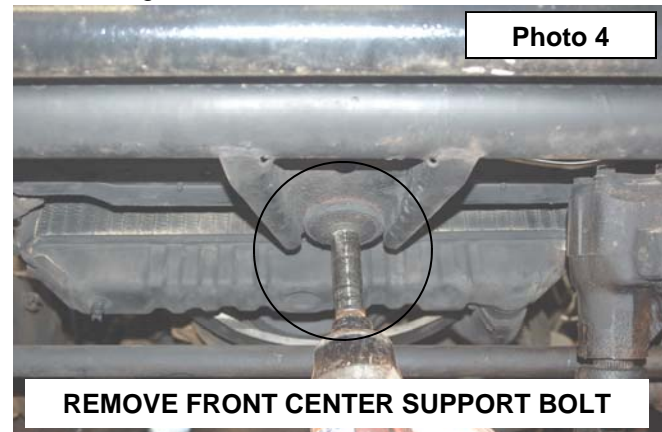
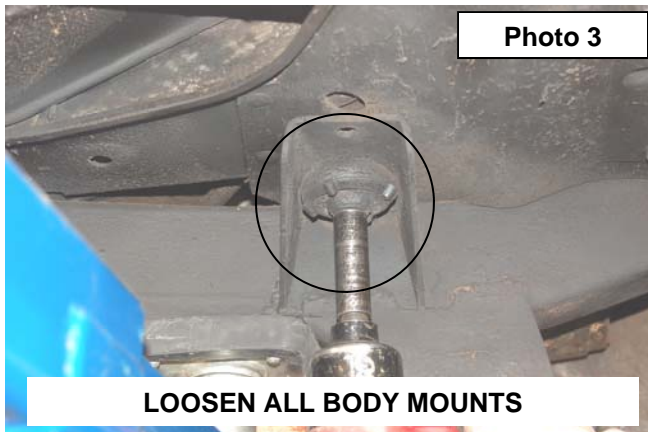


INSTALLATION INSTRUCTIONS

1. Disconnect the negative battery cable using 1/2" wrench.
2. Remove the plastic jeep cover from front of vehicle using a 3/8" wrench and the metal plate that secure the brake line.
3. Disconnect air intake from air filter housing and from throttle body. Depending on year remove coolant reservoir and power steering reservoir from fan shroud.
4. **(AUTO TRANSMISSION ONLY)** Remove the linkage on the frame to allow the body to be moved up by removing the two bolts and remove the cotter pin securing it to the engine bracket. Allowing the shifter cross shaft to hang freely. Retain hardware for reuse. **See Photo 1.**
5. Remove the 4 bolts from radiator shroud using a 13mm socket. **See Photo 2.**



6. Loosen all eleven body mount bolts using 5/8" socket. There is one in center of grill, three under each door, two above rear axle and two at each rear corner. **See Photo 3.**
7. Only remove bolts on one side at a time. Front center bolt must be remove for both sides. **See Photo 4.**
8. Using floor jack or jack stand and a wood block raise body from frame only enough to safely install the body puck. Take Caution not to over extend wires, brake lines, cables and steering shaft.



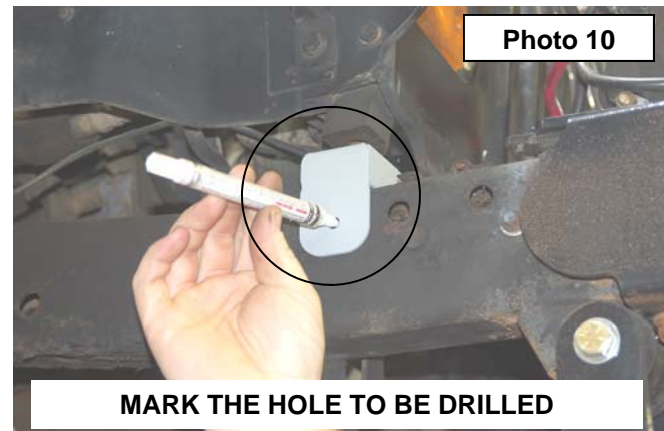
9. Remove the steel cup / sleeve from the stock body bushings. **See Photo 5** The steel cup/ sleeve will be reused.
10. Reinstall the steel cup / sleeve from the stock body bushing in the new body bushing. **See Photo 6.**



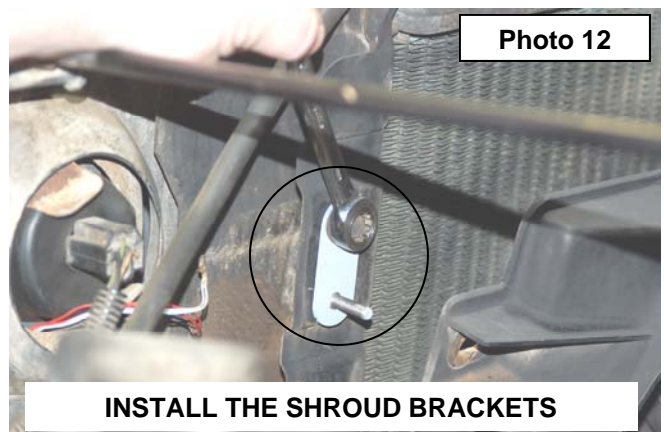
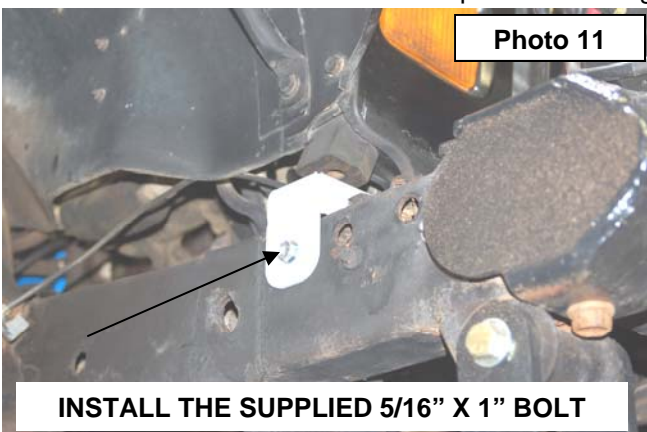
11. Install the supplied crush sleeve in the new body bushings with the smaller inner diameter hole. **See Photo 7.**
12. Install the bushings in the 3 side body locations marked **1** in the **Diagram 1.**
13. Remove the stock 2 rear most body bushings and center front body bushing marked **2** in **Diagram 1.**
14. Insert the supplied large diameter body bushings in the 2 rear most mounts and center front mount.
15. Repeat for opposite side.
16. Apply thread locker to the supplied 1/2" x 4 1/2" bolts and install the lower bushing / crush sleeve and washer on the 3 side body mounts. **See Photo 8.** Do not fully tighten at this time.



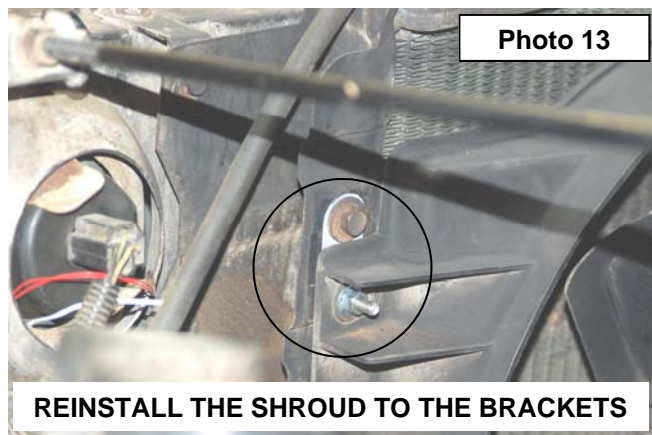
17. Install the lower bushing / crush sleeve and washer in the 4 rear mounts. Apply thread locker to the supplied 7/16" x 4" bolts and install. Do not tighten at this time.
18. Apply thread locker and install the 7/16" x 4" bolts, washer and crush sleeve in the front center mount. **See Photo 9.** Do not tighten at this time.
19. Install the new front bump stop extension under the bump stop on radiator core support. Using the bracket as a template mark hole to be drilled. **See Photo 10.**



20. Drill a 1/4" hole in frame and secure using the supplied 5/16" x 1" self tapping bolt and a 13mm socket to tighten. **See Photo 11.** Do not over tighten the bolt. Repeat for the opposite side.
21. After all body puck are in tighten all bolts. 19mm socket for the 1/2" bolts and 16mm for the 7/16" bolts.
22. Install the 1/4" clinch studs into radiator drop bracket using hammer and small socket
23. Install the four radiator fan shroud drop brackets using stock hardware. **See Photo 12.**

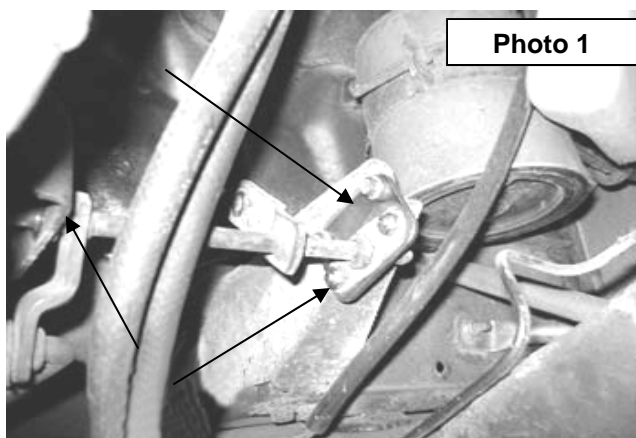


24. Reinstall the shroud on the bracket with the supplied 1/4" lock nuts and flat washers. **See Photo 13.**
25. Reinstall the coolant reservoir and power steering reservoir to the fan shroud if applicable. Use a 13mm for stock bolts and 7/16" for new nuts.
26. Reconnect the air intake to the air filter housing and throttle body.
27. Reinstall plastic jeep cover and metal plate using 3/8" socket. Metal plate should go under the body mount. Install hard brake line back into clips.
28. **(AUTO TRANSMISSION ONLY) Proceed to installation instructions for automatic shifter bracket.**
29. Re-Check all fastener to confirm all components are not binding or in the way of moving parts.



AUTOMATIC SHIFTER BRACKET INSTALLATION (FOR VEHICLE EQUIPPED WITH AUTOMATIC TRANSMISSION ONLY)

1. Using the supplied shifter location bracket, mount to the stock shift linkage bracket with the supplied 1/4" hardware and tighten. **Note: The bolts will point toward the engine.**
2. Mount the assembly in the stock location on the engine bracket and secure with stock cotter pin.
3. Mount the assembly in place on the original frame location with the stock hardware and tighten. **See Photo 1.**



POST INSTALLATION INSTRUCTIONS

1. Check all fasteners for proper torque. Check to ensure there is adequate clearance between all rotating, mobile, fixed and heated members. Check steering gear for interference and proper working order. Test brakes.
2. Check to ensure metal brake lines have sufficient slack to eliminate interference and maintain proper working order. Failure to perform inspections may result in component failure. Readjust headlights to proper settings.

MAINTENANCE INFORMATION

It is the buyers ultimate responsibility to have all bolts/nuts checked for tightness after the first 100 miles and then every 1000 miles. A qualified professional mechanic must inspect wheel alignment steering system, suspension and driveline systems at least every 3000 miles.