



---

# ROUND SIDE STEP

(1987- 2006 Wrangler YJ/TJ)

---

## INSTALLATION INSTRUCTIONS

### CONTENTS

---

- (2) Tube Steps
- (4) Body Mount Brackets
- (4) Bolts
- (4) Washers
- (4) Lock Washers

### TOOLS REQUIRED

---

10mm, 16mm, 19mm Socket  
Ratchet

**STEP 1**

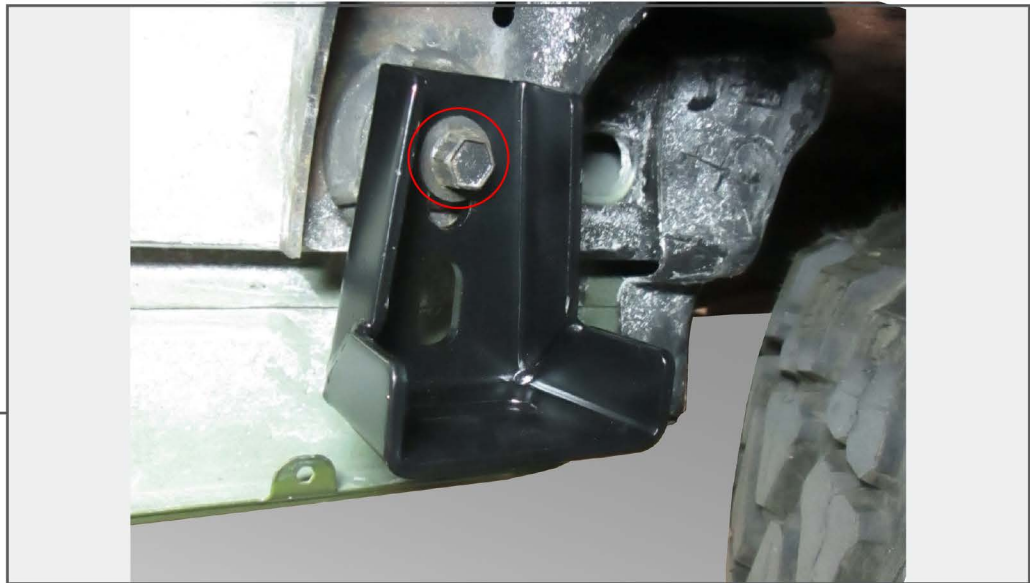


If your Jeep came with a factory step, remove the (7) 10mm bolts that attached the steps to the frame. Remove the factory step on both sides.

**STEP 2**



Remove the (2) 16mm factory body bolts, on one side of the Jeep. **ONLY REMOVE ONE SIDE AT A TIME.**

**STEP 3**

Place a bracket over the front body mount. Reinstall the factory body bolt through the inner most hole, closest to the center of the vehicle, in the bracket. Tighten the bolt until it loosely holds the bracket in place.

**STEP 4**

Place a bracket over the rear body mount. Reinstall the stock body bolt through the outer most hole, closest to the outside of the vehicle, in the bracket. Tighten the bolt until it loosely holds the bracket in place. Next, install a 19mm bolt, with a lock washer and washer, through the bracket and into the side step at the front and rear mount. Repeat the process on the other side. Tighten all hardware.