



INSTALLATION
VIDEO

ROOF RACK

(1997-2006 Wrangler TJ, Excluding Unlimited)

INSTALLATION INSTRUCTIONS

CONTENTS

(16) Small Washers	(2) Front Vertical Mounts
(12) Medium Washers	(2) Rear Vertical Mounts
(8) Large Washers	(2) Rear Vertical Supports
(8) Small Lock Washers	(6) Small Nuts
(8) Small Allen Head Bolts	(4) Large Nuts
(8) Adhesive Rubber Pads	(4) Hex Head Bolts
(2) Side Horizontal Supports	
(8) Large Allen Head Bolts	
(6) Medium Allen Head Bolts	
(3) Cargo Support Bars	
(6) Cross Bar Knobs	

TOOLS REQUIRED

T40 Torx
3/16" Allen
13mm Wrench
17mm Wrench

STEP 1

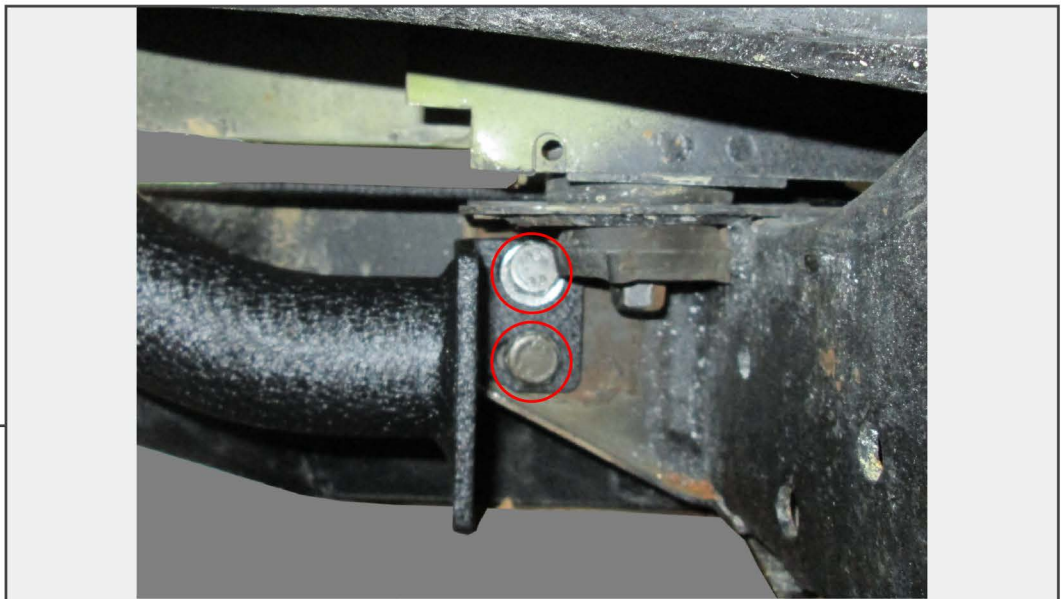
Remove the door from the vehicle. Remove the (4) stock T40 screws from the upper and lower hinge. The lower hinge will separate from the body, there is a threaded plate on the inside of the vehicle will also come loose.

STEP 2

Install the adhesive rubber to the body side of the roof rack plates to protect the paint. Install (2) 3/16" allen screws with small washers through the roof rack's front vertical support, into the top hinge plate. Install (2) 3/16" allen screws into the lower hinge, through the inner threaded plate. Tighten the upper hardware and hand tighten the lower hardware. Place the door back on the hinges and slowly close it, it may need to be pulled up while closing. Once it is latched, tighten the lower hinge.

**STEP 3**

Support the rear bumper. Remove the (2) rear bumper mounting nuts or bolts. If you are reusing the stock bumper the holes shown will need to be enlarged.

**STEP 4**

Reinstall the rear bumper hardware through the lower rear vertical roof rack mount and loosely tighten the hardware, leaving approximately a 1/4" of play for adjustability. Use the (4) included hex bolts and nuts if needed.

STEP 5

IF THE VEHICLE IS EQUIPPED WITH BODY SPACERS: Use the supplied roof rack vertical spacers on the rear vertical mount. They are measure for 1"-3" body lifts and will lift the rear of the rack to compensate for the difference.

STEP 6

Install the upper rear vertical support into the lower rear vertical mount. Install a medium 5mm allen bolt, washer / washer, lock nut combination to hold it in place. These are side specific and will curve in toward the body from bottom to top.

STEP 7

Install a side horizontal support into the front vertical support and loosely install a medium 5mm allen bolt, washer / washer, lock nut combination to hold it in place. Be sure to support the rear of the support to keep it from damaging the vehicle.

STEP 8

Maneuver the rear vertical support onto the horizontal support and install a medium 5mm allen bolt, washer / washer, lock nut combination to hold it in place.

Repeat these steps on the opposite side of the vehicle.

**STEP 9**

Install the (1) short cargo support bar into the front holes of the rack, then the (2) longer bars into the rear holes. Place included adhesive foam to the lower side of the cargo support bars. Install the cargo support bars on the horizontal supports and connect them with 5mm allen bolts, washers / hand knobs (as shown). Make sure the roof rack is sitting straight and tighten down all hardware.

All hardware should be rechecked a few days after installation. If any hardware has loosened or settled it should be retightened.