

## Red Rock 4x4 Rear Hinged Tire Carrier w/Tire Mount (07-13 Wrangler JK)

### Tools Required:

- 10mm Socket
- 21mm Socket
- 22mm Socket
- 10mm Wrench
- 21mm Wrench
- 22mm Wrench
- T-50 Torx Bit



Step 1. Remove the rear wheel, then pull the hinge covers off by unsnapping them from the hinge assembly.



Step 2. Remove the (8) 10mm bolts holding the tire carrier to the rear of the vehicle.



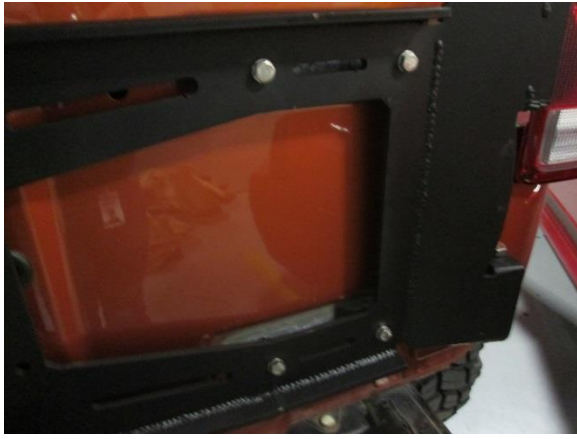
Step 3. Remove the (4) 10mm bolts holding the hinge to the rear door, then remove the (6) T-50 torx bolts holding the hinge to the body of the Jeep



Step 4. Install the replacement hinge hardware to the factory mounting points using the factory hardware.



Step 5. Mount the new tire carrier to the hinges using the supplied 21mm mounting bolts and 22mm nuts to hold it in position.



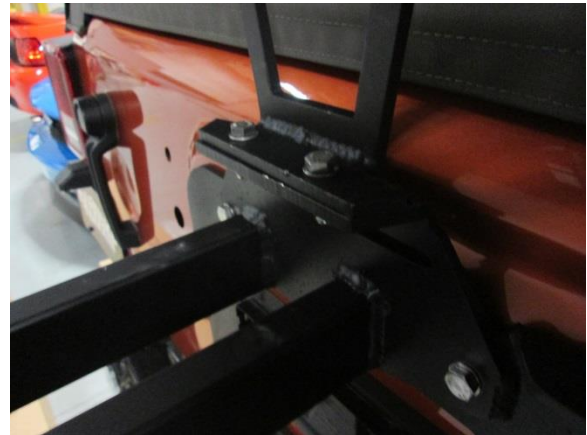
Step 6. Using the long 10mm bolts supplied with this mount, slide them through the carrier and through the supplied spacers to bolt it to the rear door. Note, the longer spacers will be used closer to the hinge for proper fitment.



Step 7. Bolt the rest of the tire carrier to the rear door using the (8) 10mm supplied bolts. The mount will reuse all factory mounting points.

Step 8. Align the door and tighten all bolts down to ensure they are tight to the vehicle.

For kits with the optional tire mount, please follow the instructions below.



Step 9. Mount the third brake light bracket to the tire mount using the supplied 10mm bolts and nuts.



Step 10. Using the factory hardware, mount the brake light to the new bracket and route the wires into the door using the factory grommet and wiring harness.

