

## **ZRoadz 3 in. LED Light Cube Tail Light Cage Mounting Brackets**

### **Installation Guide for Jeep Wrangler '07-'16 2-Door JK**

**Installation Time:** <1 Hour

**Tools Required:**

- ✓ Box Cutter/Knife
- ✓ Pliers
- ✓ Philips Head Screwdriver
- ✓ Crescent Wrench

**Installation Instructions:**

1. Carefully open the package using a box cutter or knife (Figure A) and pliers (Figure B). Ensure the hardware is included and undamaged.



Figure A

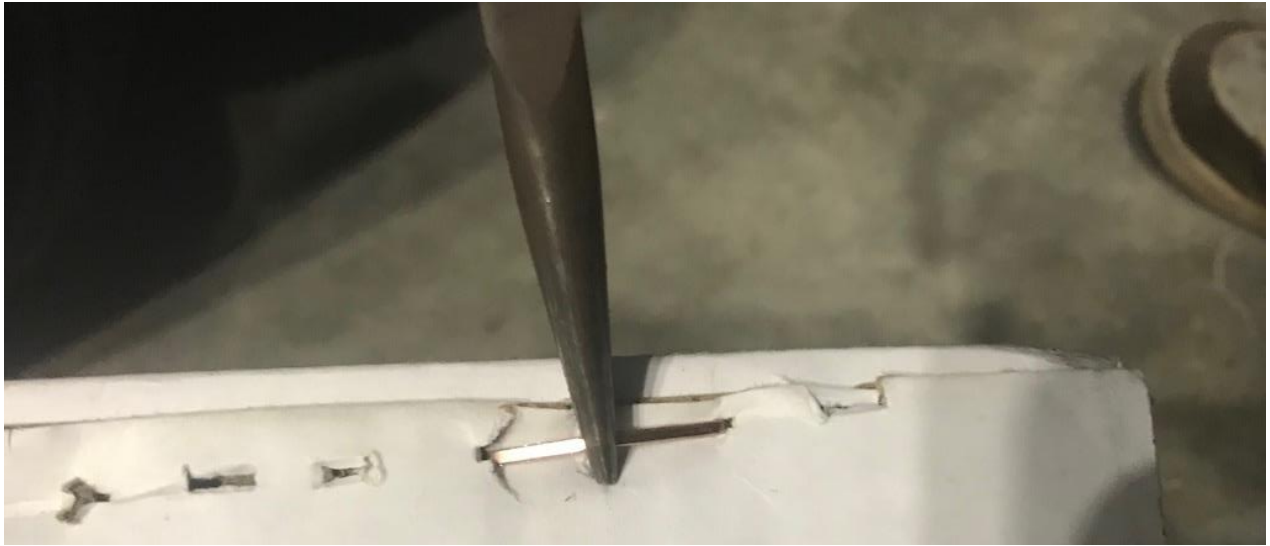


Figure B

2. Remove the two inside screws from the driver's side rear brake light (the longer screws) (Figure C).



Figure C

3. Remove the two outside screws from the driver's side rear brake light (the shorter screws) (Figure D).



Figure D

4. Connect the 3 in. cube LED to the top of the mounting bracket using the supplied hardware (Figure E). Tighten using a crescent wrench.



Figure E

5. Slide the mounting bracket over the driver's side rear brake light and, using a Philips head screwdriver, screw the bolts on the inside and outside of the brake light into place (Figure F).

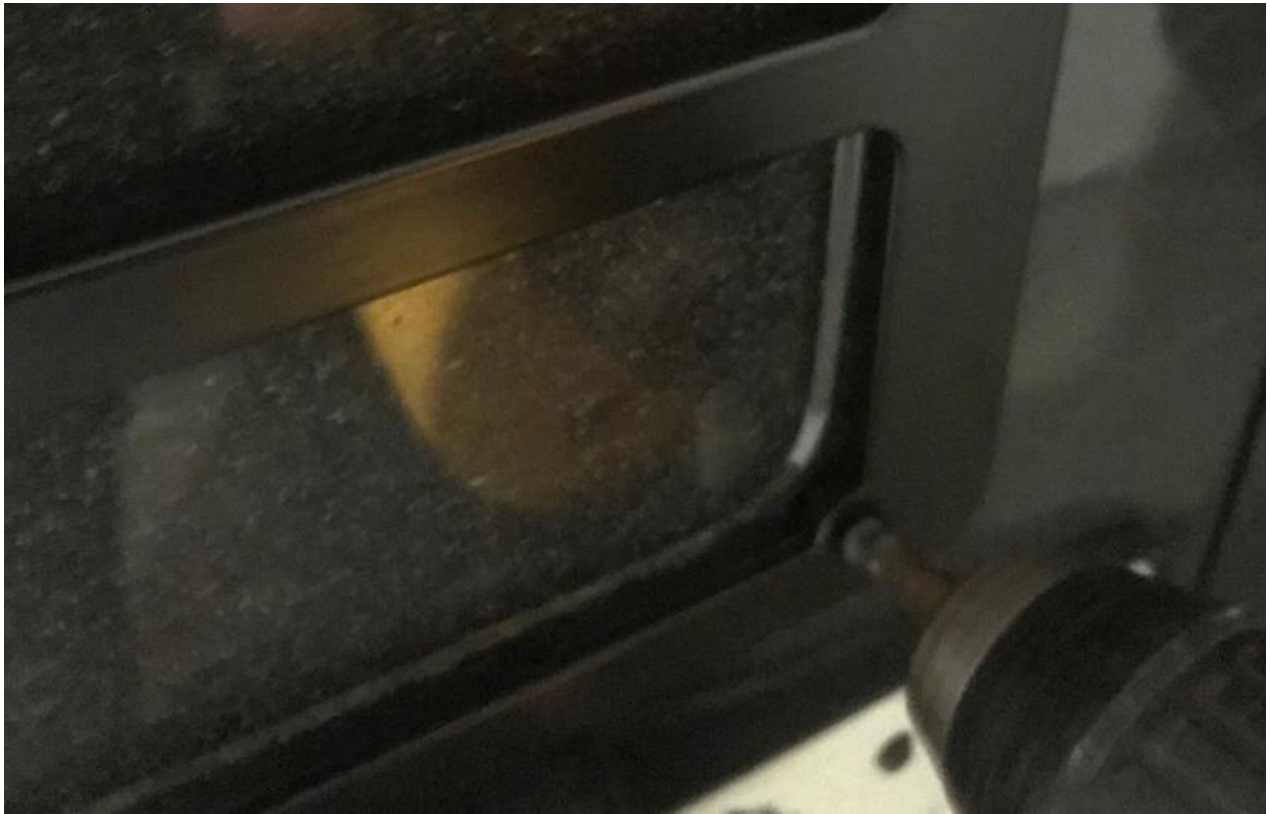


Figure F

6. Connect the wiring harness to the battery, ensuring the positive (+) wire is connected to the positive (+) battery terminal and the negative (-) wire is connected to the negative (-) battery terminal.
7. Connect the wiring harness to the 3 in. cube LED.
8. Tuck the wiring (Figure G).



Figure G

9. Repeat steps 2-8 on the passenger side.



Before



After

Installation Instructions Written by ExtremeTerrain Customer J. Sandlin 01/16/2018