

TJM Heavy Duty Awning Mount Brackets - Pair

Installation Guide for Jeep Wrangler '07-'16 2-Door JK

Installation Time: <1 Hour

Tools Required:

- ✓ Box Cutter/Knife
- ✓ 4 Bolts (1/4" diameter)
- ✓ 4 Washers (1/4" diameter)
- ✓ 4 End-Close Nuts (1/4" diameter)
- ✓ 7/16" Wrench
- ✓ 7/16" Socket
- ✓ Socket Wrench
- ✓ Awning

Installation Instructions:

Note: This installation requires a roof rack to be previously installed onto the Jeep Wrangler. It also requires an awning and bolts for connecting the awning to the bracket (not supplied).

1. Carefully open the package using a box cutter or knife (Figure A) and ensure the brackets and hardware are included and undamaged.



Figure A

2. Place a mounting bracket facing outward along the side of the roof rack (Figure B).



Figure B

3. Place a bolt and flat bracket on the outside of the top bracket hole (Figure C). Thread the end-close nuts onto the bottom of the bracket.



Figure C

4. Tighten the top and bottom bolts back and forth until the mount is secured against the roof rack using a 7/16" wrench and 7/16" socket wrench (Figure D).



Figure D

5. Ensure the mount is secured (Figure E).



Figure E

6. Slide a bolt (provided with separate awning purchase) into the top and bottom runners of the awning (Figure F).

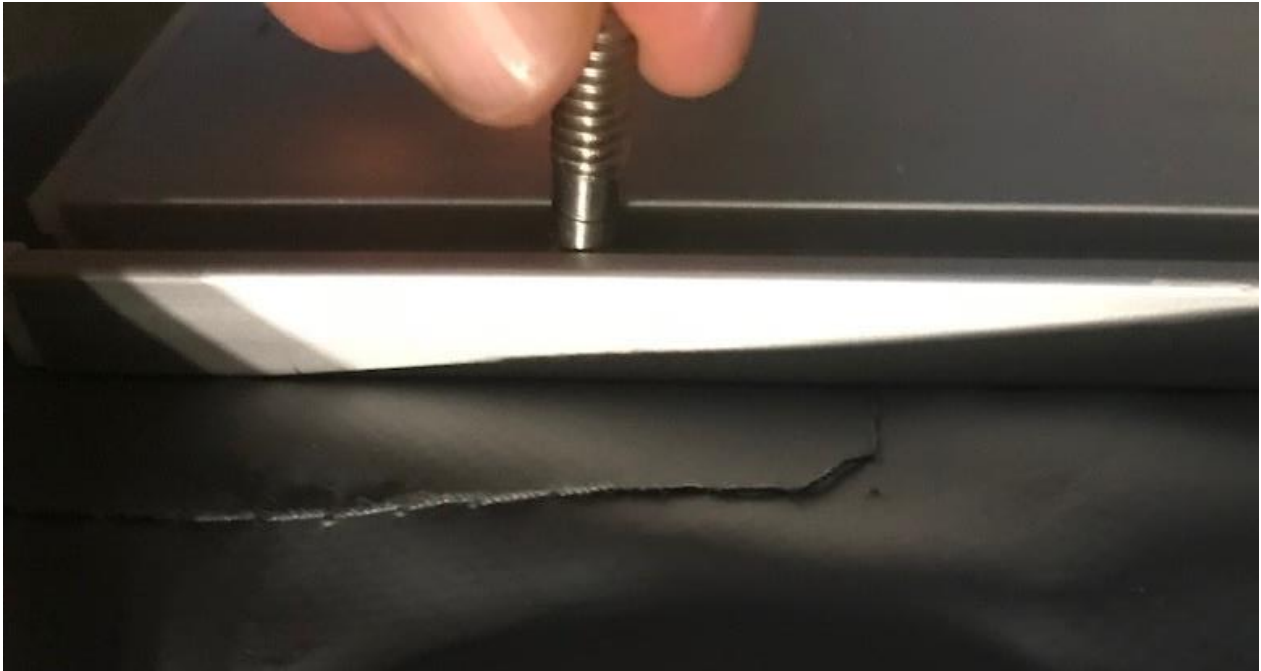


Figure F

7. Slide the bolts through the outward facing mount holes and tighten end-close nuts (provided with separate awning purchase) (Figure G).



Figure G



Before



After

Installation Instructions Written by ExtremeTerrain Customer J. Sandlin 01/19/2018