

Teraflex Sport Rear Upper FlexArm Kit for 2.5-3 in. Lift

Installation Guide for Jeep Wrangler '07-'18 4-Door JKU

Installation Time: 1 Hour

Tools Required:

- ✓ Jack
- ✓ Jack Stands
- ✓ 21mm Socket Wrench
- ✓ Torque Wrench

Installation Instructions:

1. Remove front tires and jack up the rear of the vehicle. Place jack stands under the frame (Figure A).



Figure A

2. Locate the driver's side rear upper control arm (Figure B).



Figure B

3. Loosen the top bolt using a 21mm socket wrench (Figure C).



Figure C

4. Loosen the bottom bolt using a 21mm socket wrench (Figure D).



Figure D

5. Remove the top bolt (Figure E).

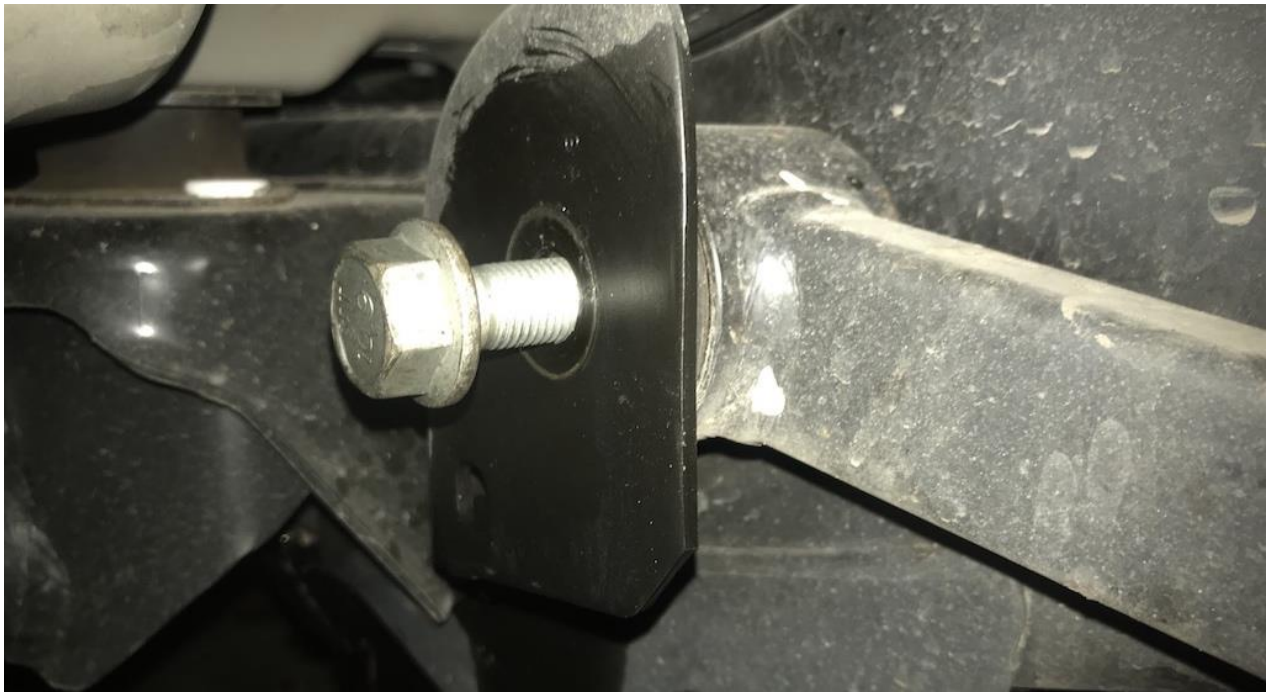


Figure E

6. Remove the lower bolt and set the control arm to the side (Figure F).



Figure F

7. Place the TeraFlex rear upper control arm into place and insert the top bolt (Figure G).



Figure G

8. Tighten bolt using a captured bolt (Figure H).



Figure H

9. Repeat Steps 2-8 on the passenger's side.
10. Install the rear tires back on.
11. Lower the jack.
12. Torque each bolt to 125 ft. lbs.



Before



After

Installation Instructions Written by ExtremeTerrain Customer J. Sandlin 11/11/2018