

Teraflex Full Hard Door Hanger

Installation Guide for Jeep Wrangler '07-'18 4-Door JKU

Installation Time: <1 Hour

Tools Required:

- ✓ Box Cutter/Knife
- ✓ Drill
- ✓ Drill Bit
- ✓ Level
- ✓ Stud Finder
- ✓ Pen/Pencil
- ✓ Philips Head Screwdriver

Installation Instructions:

1. Using a stud finder, locate a suitable location to mount the door hangers (Figure A).



Figure A

2. Utilize a level to ensure the door hanger will mount correctly (Figure B).



Figure B

3. Using a pen or pencil, mark the location to drill pilot holes for the door hanger (Figure C).

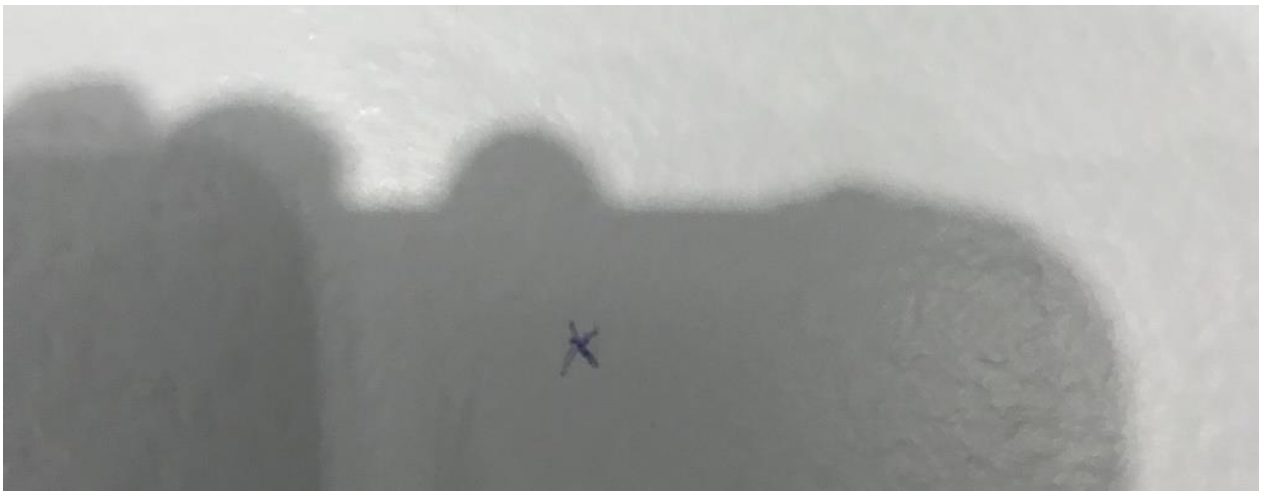


Figure C

4. Drill the pilot holes (Figure D).

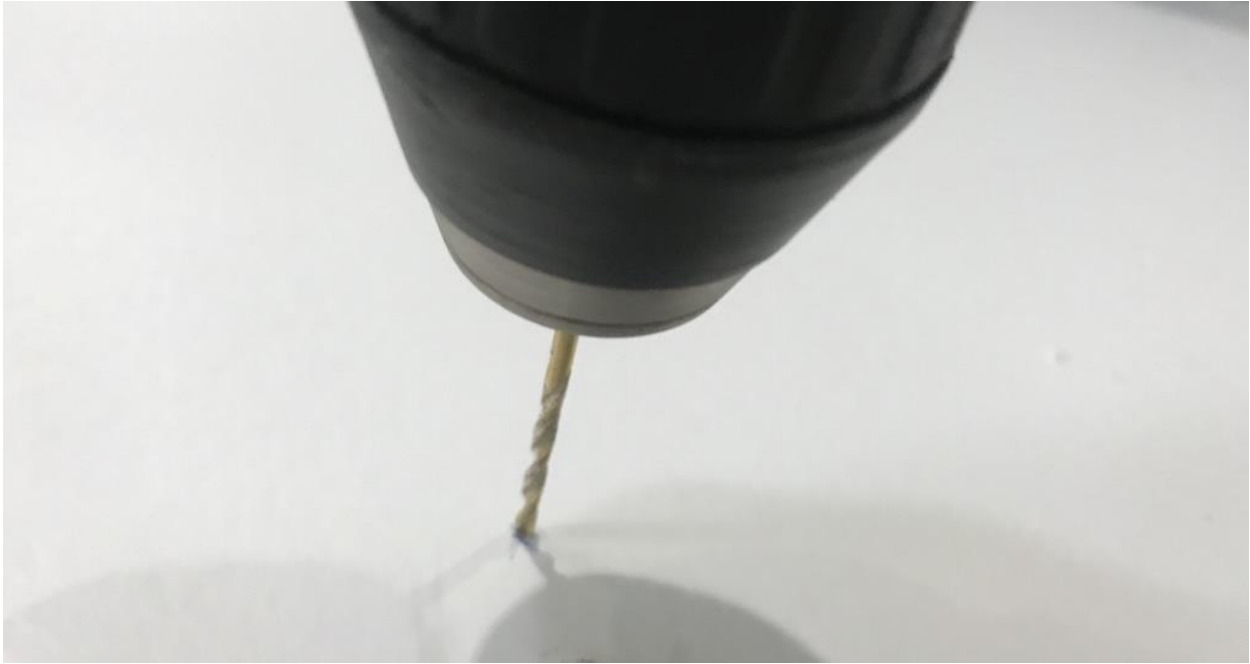


Figure D

5. Mark the second pilot hole placement that is level with the first (Figure E).

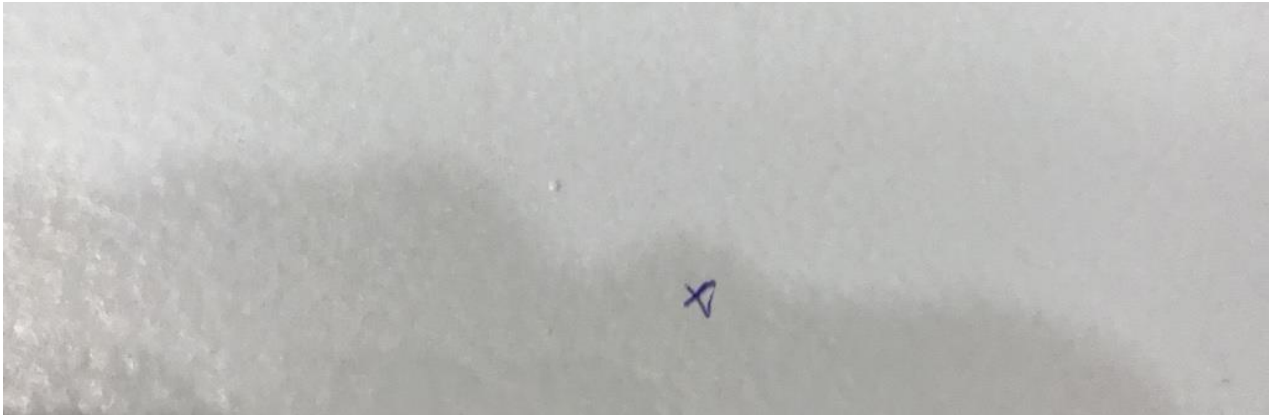


Figure E

6. Align the door hanger with the pilot holes (Figure F).

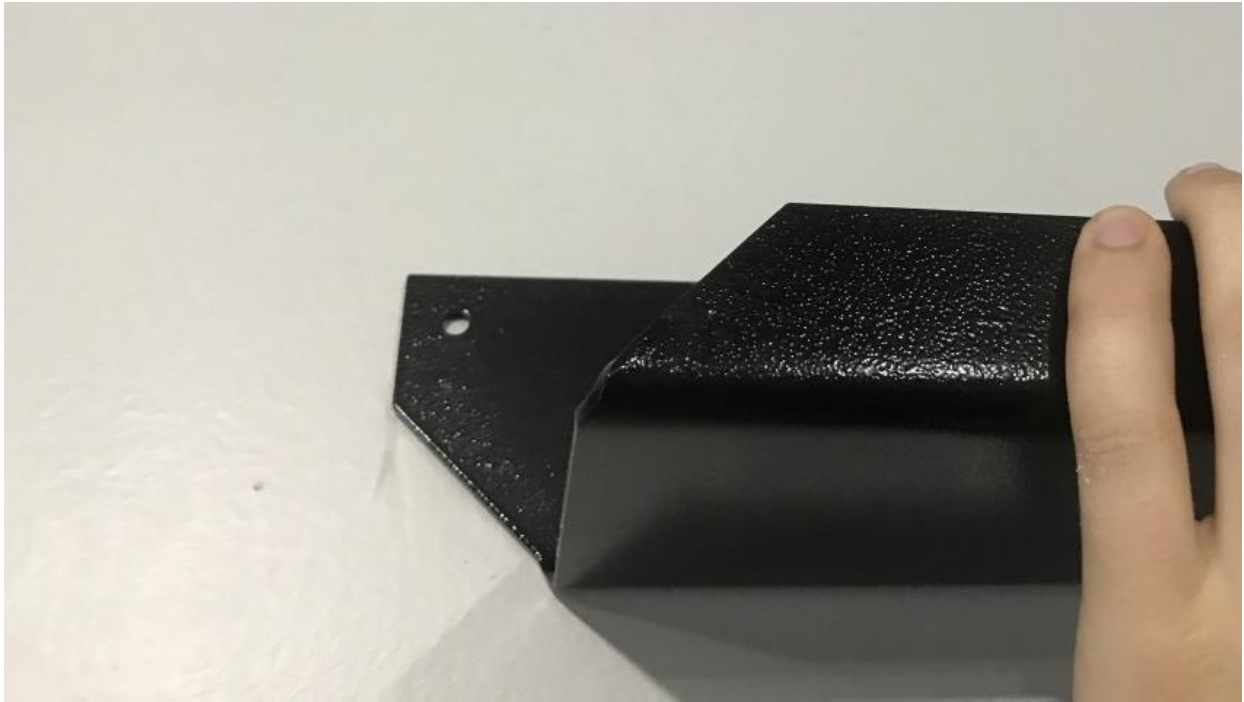


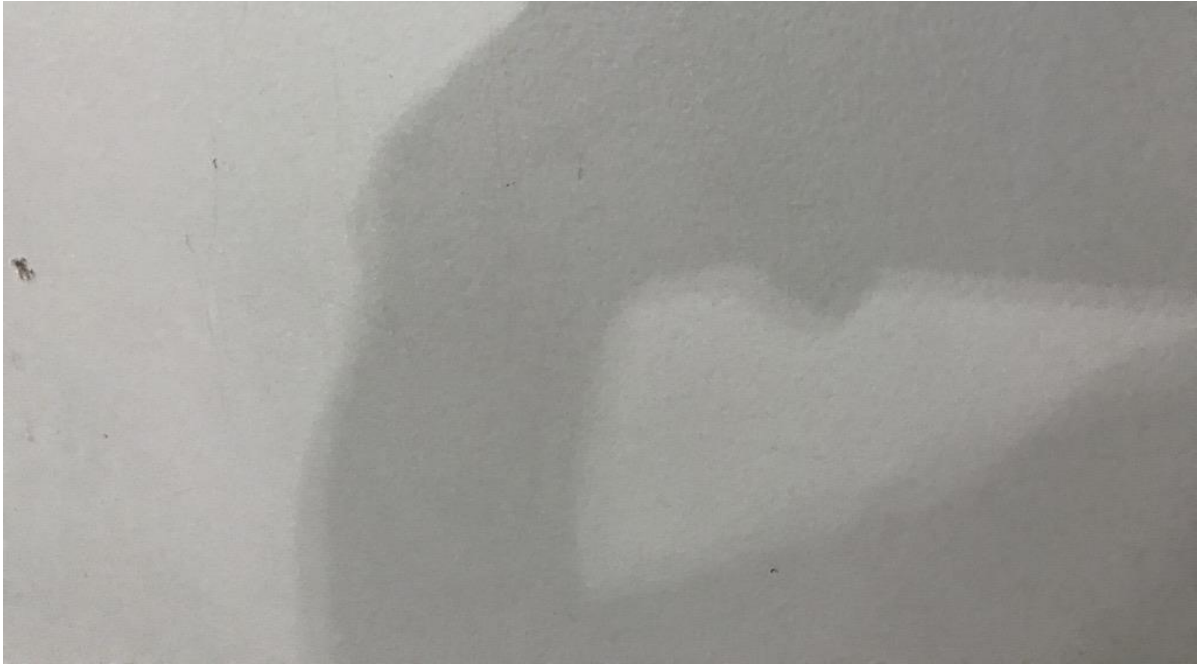
Figure F

7. Using a Philips head screwdriver, screw in the wood screws (not supplied) to connect the door hanger to the wall (Figure G).



Figure G

8. Repeat Steps 1-6 for the other door hanger.



Before



After

Installation Instructions Written by ExtremeTerrain Customer J. Sandlin 08/08/2018