

Suntop Tailmesa Tailgate Table

Installation Guide for Jeep Wrangler '07-'18 4-Door JKU

Installation Time: <1 Hour

Tools Required:

- ✓ Philips Head Screwdriver

Installation Instructions:

1. Pop the wire cover off corner of the inside tailgate (Figure A).



Figure A

2. Remove the entire cover (Figure B).



Figure B

3. Press each of the white screw inserts into the lined holes (Figure C).



Figure C

4. Press the tailgate table into place and slide a screw into each of the white screw inserts using a Philips head screwdriver (Figure D).

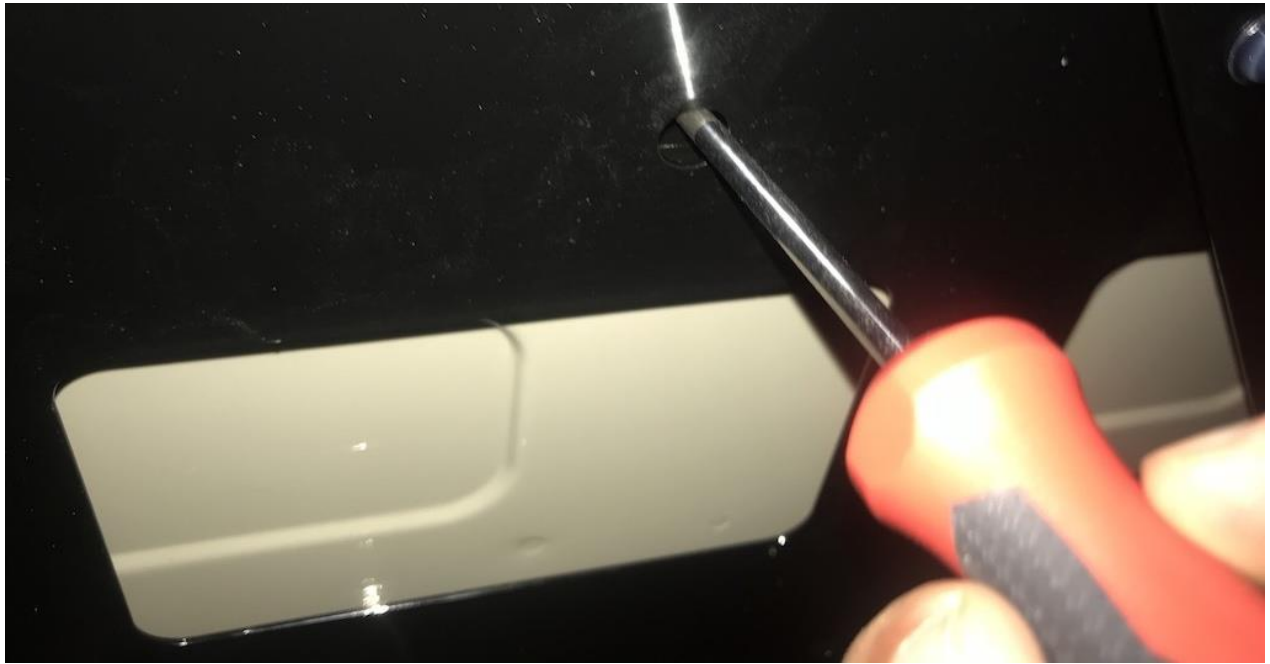


Figure D

5. Tighten each screw into place (Figure E).



Figure E

6. With all the screws tightened into place, pull out both sides and insert each side's notch into the top and bottom pull-out trays of the table (Figure F).



Figure F



Before



After

Installation Instructions Written by ExtremeTerrain Customer J. Sandlin 08/30/2018