

Installation Guide For Suntop Cargo Rack

Installation Time: 60-90 minutes

Tools Required:

- ✓ 5 mm Hex Bit (for bolts provided)
- ✓ T30 Torx Bit (for OEM bolts)
- ✓ Socket wrench

Pre-Installation notes: OEM bolts (6) for securing hard top will be used for install (hardware not included in box).

Installation Instructions:

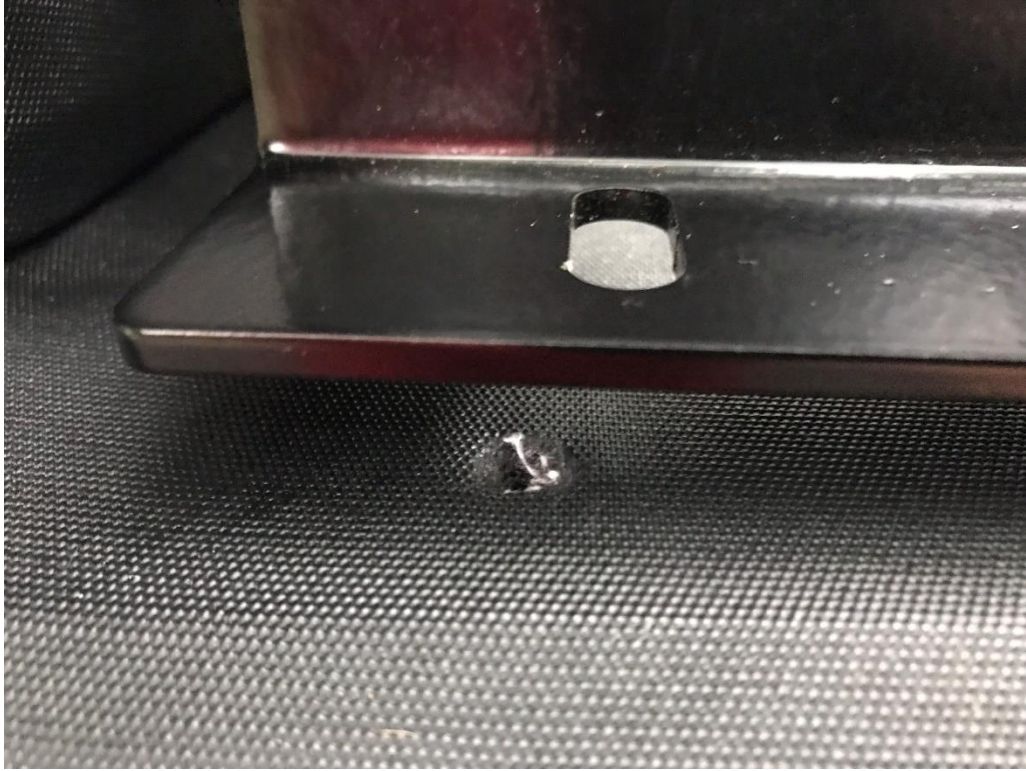
1. Ensure cargo soft top is securely fastened



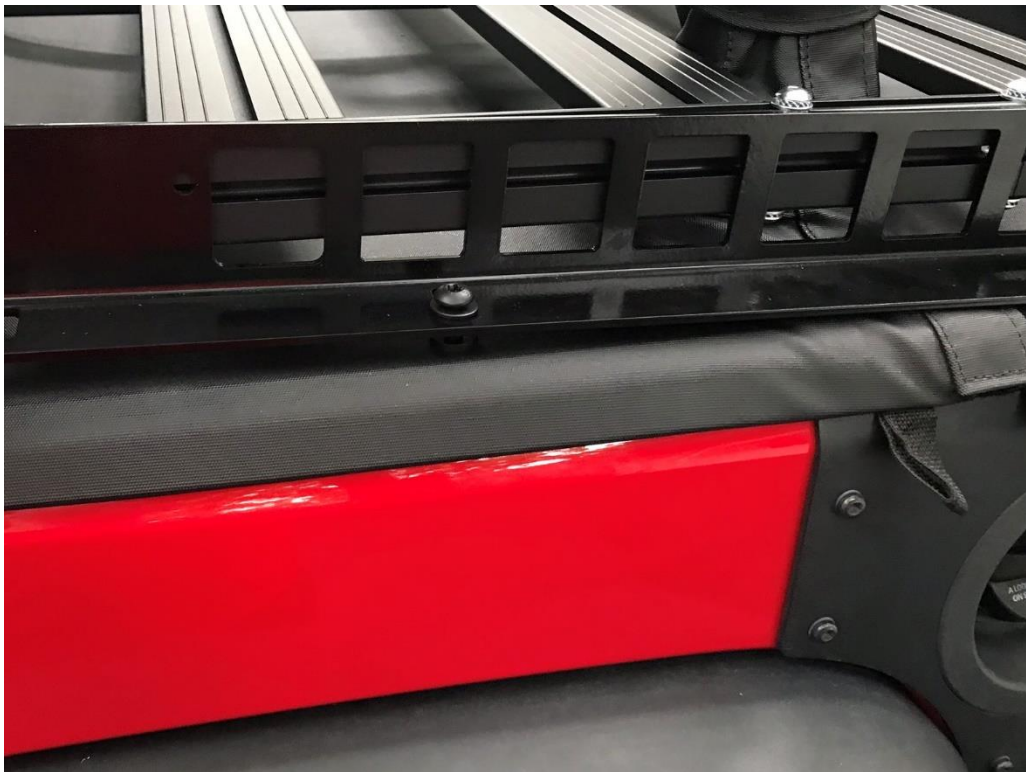
2. Position the rack between the roll cage by loosening and removing aluminum inserts on both sides and replacing once positioned around roll cage.



3. Position the "L" brackets along each side of the cargo rack, aligning "L" bracket with existing jeep inserts in the body of the jeep. If necessary, make holes in the cargo top large enough to use OEM bolts.



4. Secure the "L" bracket to the body of the car (do not tighten all the way) with OEM bolts on both sides.



5. Place covers over the "L" bracket and align bolt openings with supplied nuts (to be inserted in open channel of rack)



6. Secure the rack, the "L" bracket and cover with bolts and washers provided on both sides.



7. Tighten all bolts.



Installation Instructions Written by ExtremeTerrain Customer Michael B. 08/15/2018