

## Snyper Triple Tube Rock Rails

**Installation Time:** 2 hours

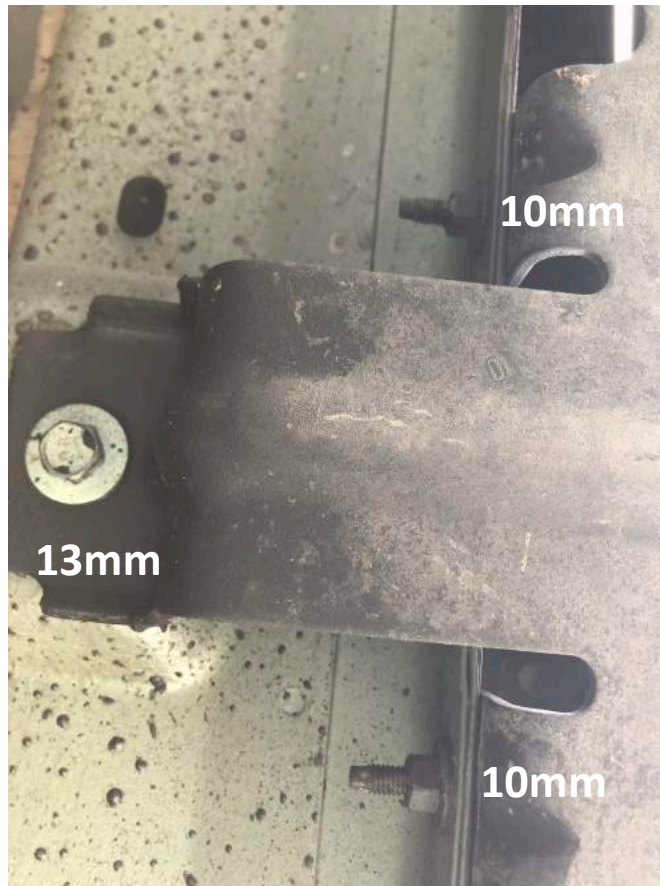
**Tools Required:**

- 10mm socket
- 13mm socket
- 16mm socket
- 18mm socket
- 3/8 Drive Ratchet
- 1/2 Drive Ratchet
- Floor Jack (recommended)

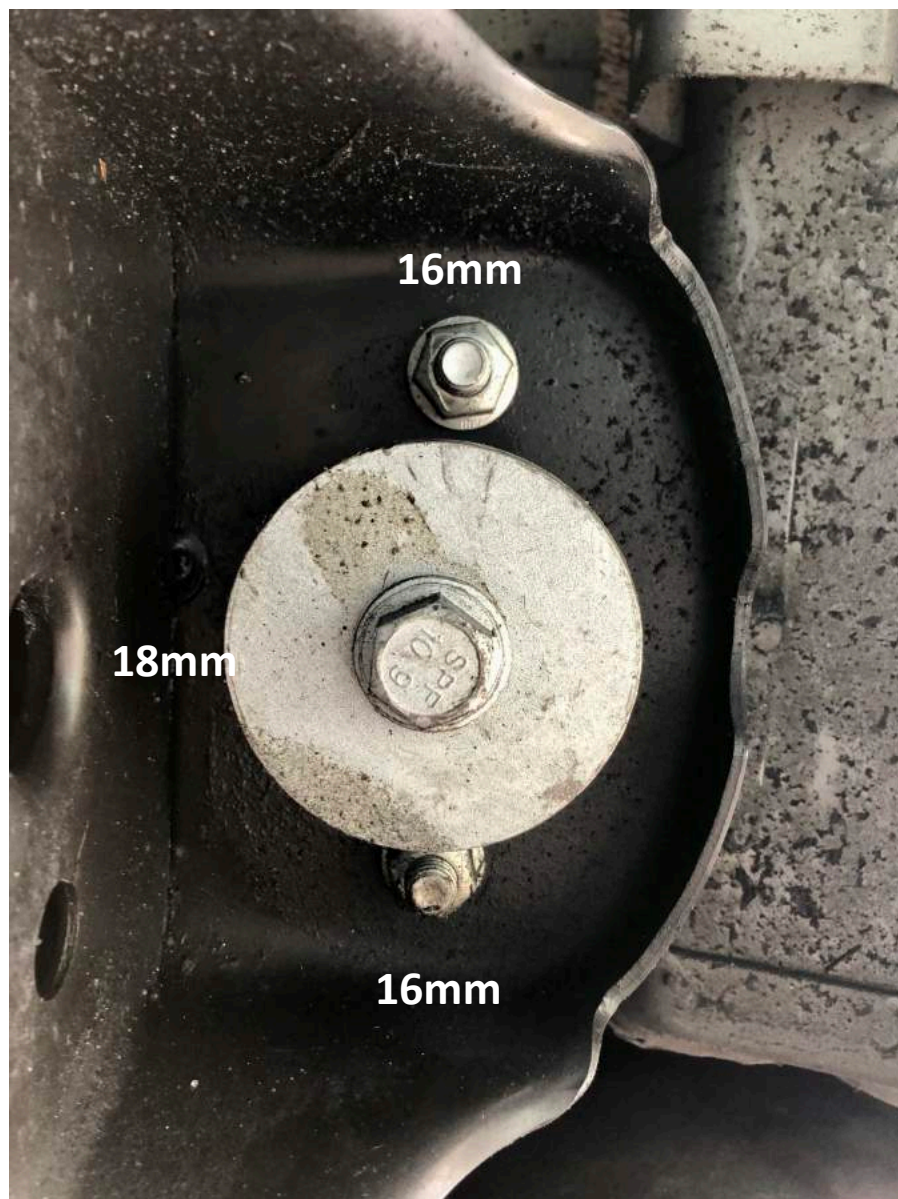


### Installation Instructions:

1. If your vehicle is equipped with OEM or aftermarket rock rails be sure to remove them using a 10mm and 13mm socket. There are a total of (6) 10mm nuts and (3) 13mm bolts per side. Once all the hardware has been removed, pull the rock rail straight towards you and set aside. This will **NOT** be reinstalled.



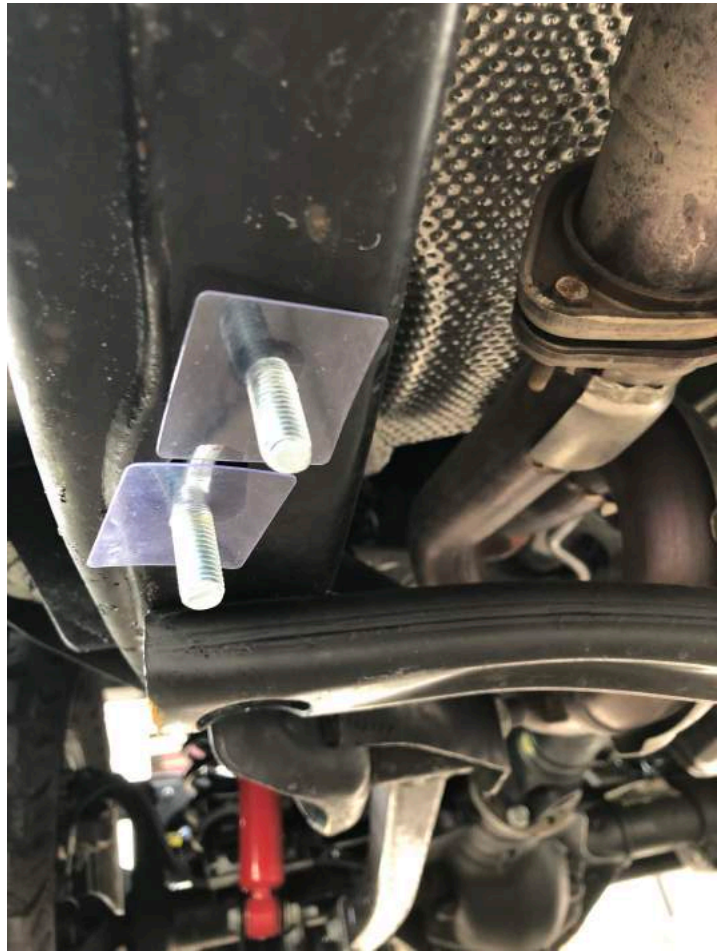
- Using your 18mm and 16mm sockets, loosen the factory M12 body bolt and two factory M10 nuts. These points are where your Triple Tubes will be mounted.



3. Slide the M12 Bolt Plate through the frame. Once the M12 Bolt Plate is in position, attach the M12 Poly Retainer to keep the Bolt Plate in place.



4. Slip the M10 U-Bolt through the bottom of the frame and rotate it through the second hole. Once the U-Bolt is in place, attach the two M10 Poly Retainers to keep the U-Bolt in place.



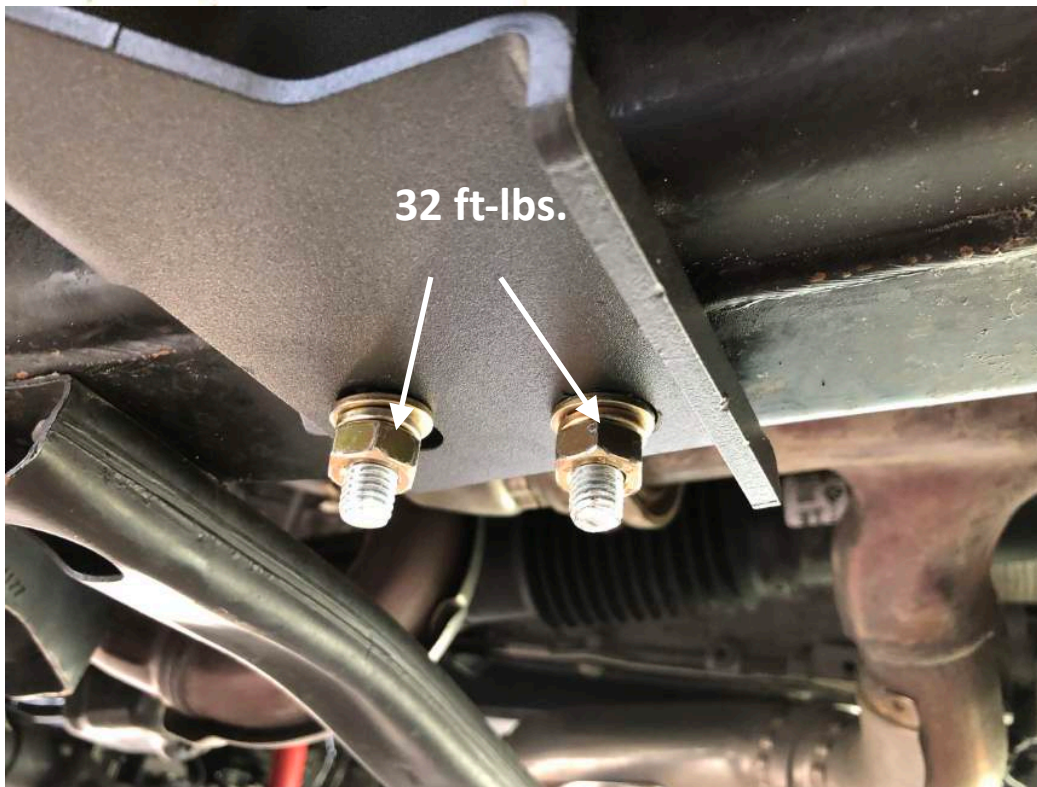
5. Now using your jack or an extra set of hands lift the rock rail into place and align the mounting locations. Start by positioning the rear and center body mount bolts. Once those locations are in place move to the front of the vehicle and line up the Bolt Plate and U-Bolt.



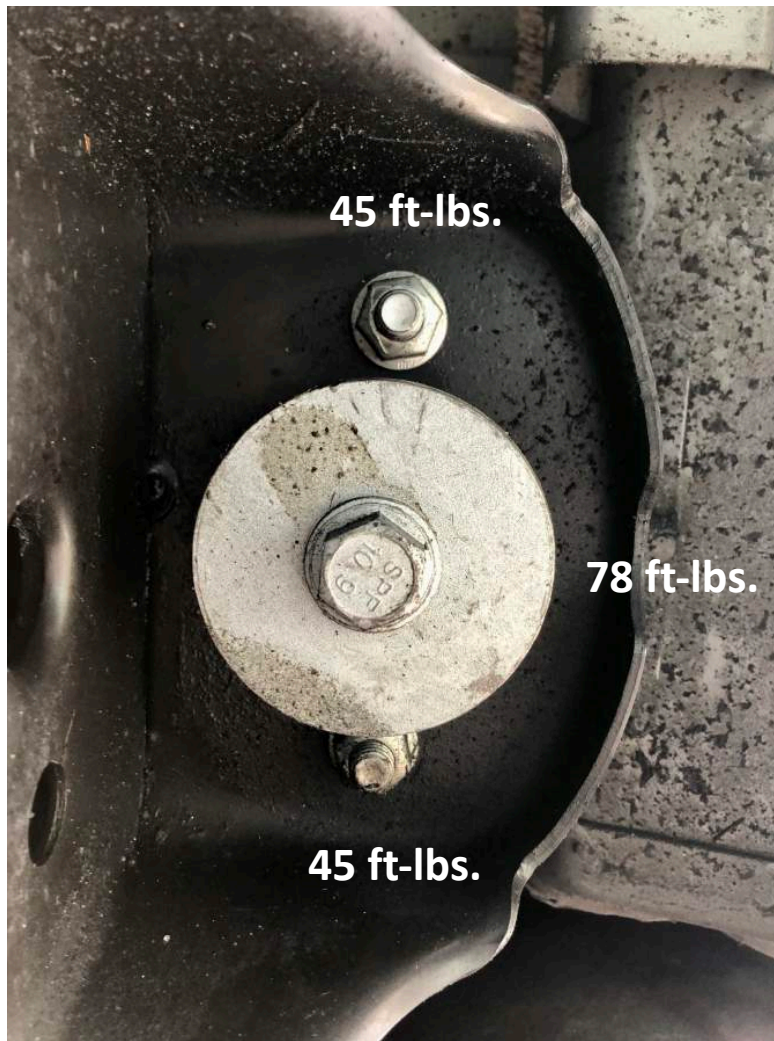
6. Loosely attach the washer, lock washer and nut to the front mounting bracket



- Using the factory hardware loosely secure the two body mount brackets.
- Adjust the steps to the desired location and torque the supplied M10 hardware to 32 ft-lbs and M12 to 55 ft-lbs. Torque the factory M10 nuts to 45 ft-lbs and the M12 Body Bolt to 78 ft-lbs.







9. Repeat steps for Passenger Side.

10. Installation is now complete.

**Before**



**After**



