

Smittybilt Limb Risers

Installation Guide for Jeep Wrangler '07-'16 2-Door JK

Installation Time: 1 Hour

Tools Required:

- ✓ Box Cutter/Knife
- ✓ 10mm Socket
- ✓ Socket Wrench

Installation Instructions:

1. Carefully open the package using a box cutter or knife (Figure A) and ensure the hardware is included and undamaged.



Figure A

2. Remove the hood latch bolts using a 10mm socket wrench on the underside of the hood (Figure B).



Figure B

3. Remove the hood latch (Figure C).



Figure C

4. Place the lower limb riser mount on the hood latch and return it using the two 10mm bolts removed in Step 2 (Figure D).



Figure D

5. Identify the location of the upper mount bracket (Figure E). Mark the location. **Note:** If not using a roof rack mounting location, utilize the inside of the door panel at the top of the windshield.



Figure E

6. Drill and install the supplied screws to hold the top mount bracket in place.
7. Using the supplied M8 hardware, attach the limb riser to the top mount bracket (Figure F).



Figure F

8. Using the supplied M8 hardware, attach the limb riser to the lower mount (Figure G).



Figure G

9. Tighten the buckle to an appropriate amount of tension (Figure H).

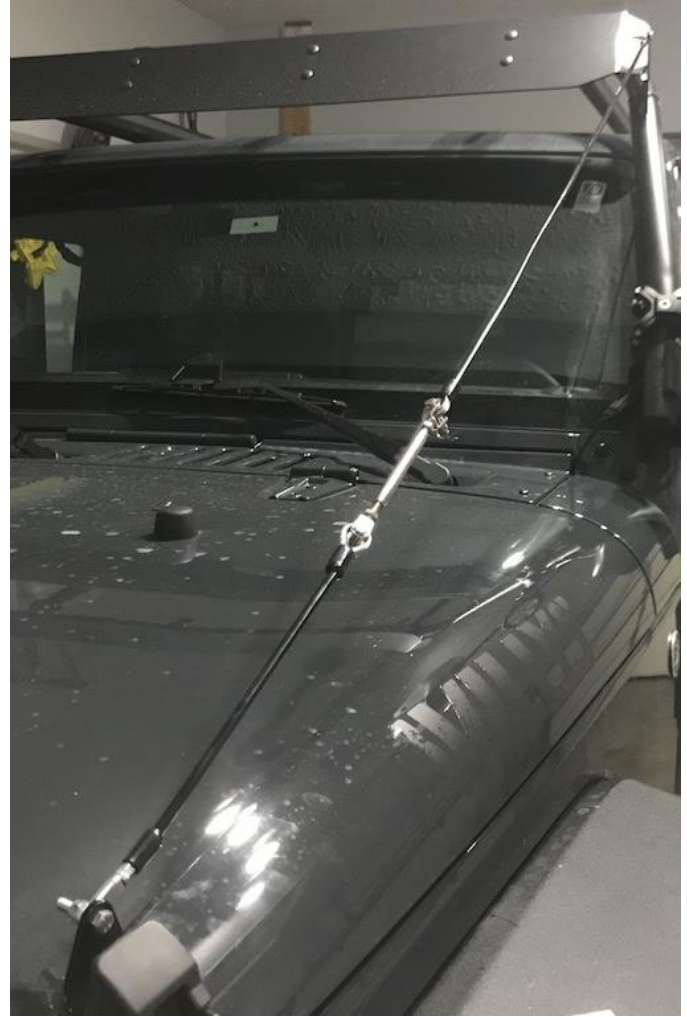


Figure H

10. Repeat Steps 2-9 on the other side.



Before



After

Installation Instructions Written by ExtremeTerrain Customer J. Sandlin 03/07/2018