

Rugged Ridge Rectangular Stubby Trail Mirror - Textured Black

Installation Guide for Jeep Wrangler '07-'16 2-Door JK

Installation Time: <1 Hour

Tools Required:

- ✓ Box Cutter/Knife
- ✓ 13mm Wrench
- ✓ Torx 40 Bit

Installation Instructions:

1. Carefully open the package using a box cutter or knife (Figure A) and ensure the hardware is included and undamaged.

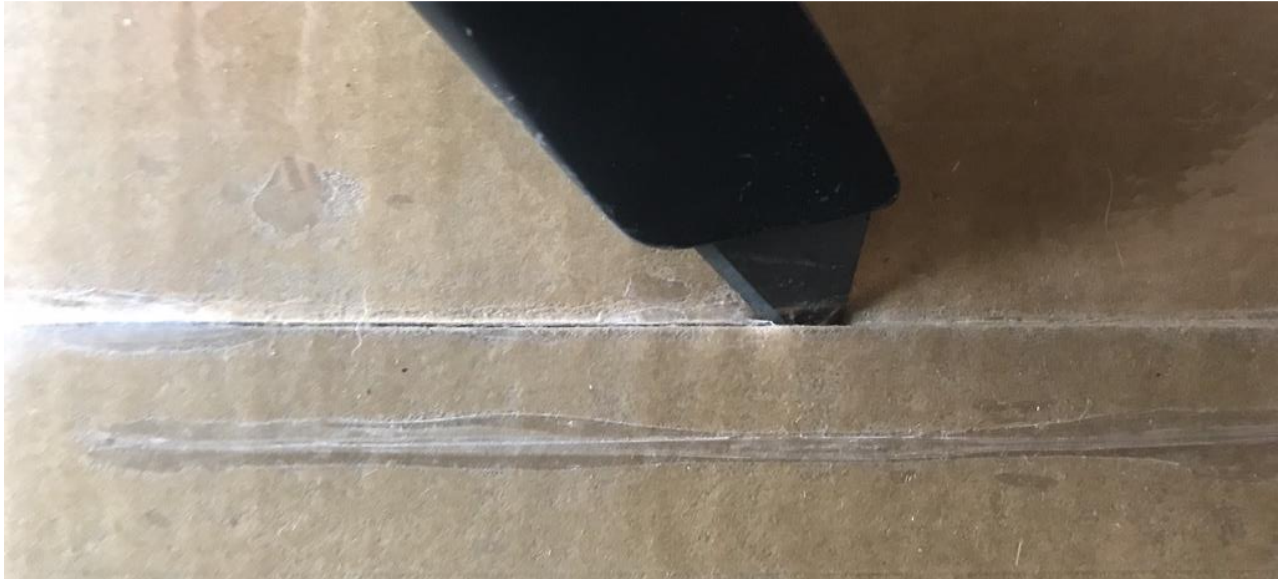


Figure A

2. Using a Torx 40 bit, unscrew the top two bolts on the A-Pillar (Figure B).



Figure B

3. Remove both bolts (Figure C).



Figure C

4. Using the included hardware, bolt the mount to the A-Pillar (Figure D).



Figure D

5. Insert the mirror crossbar into the mount hole (Figure E).



Figure E

6. Thread the screw through the mount and mirror crossbar (Figure F).



Figure F

7. Connect the mirror to the mirror crossbar by threading the bolt and washer onto the rear of the mirror (Figure G).



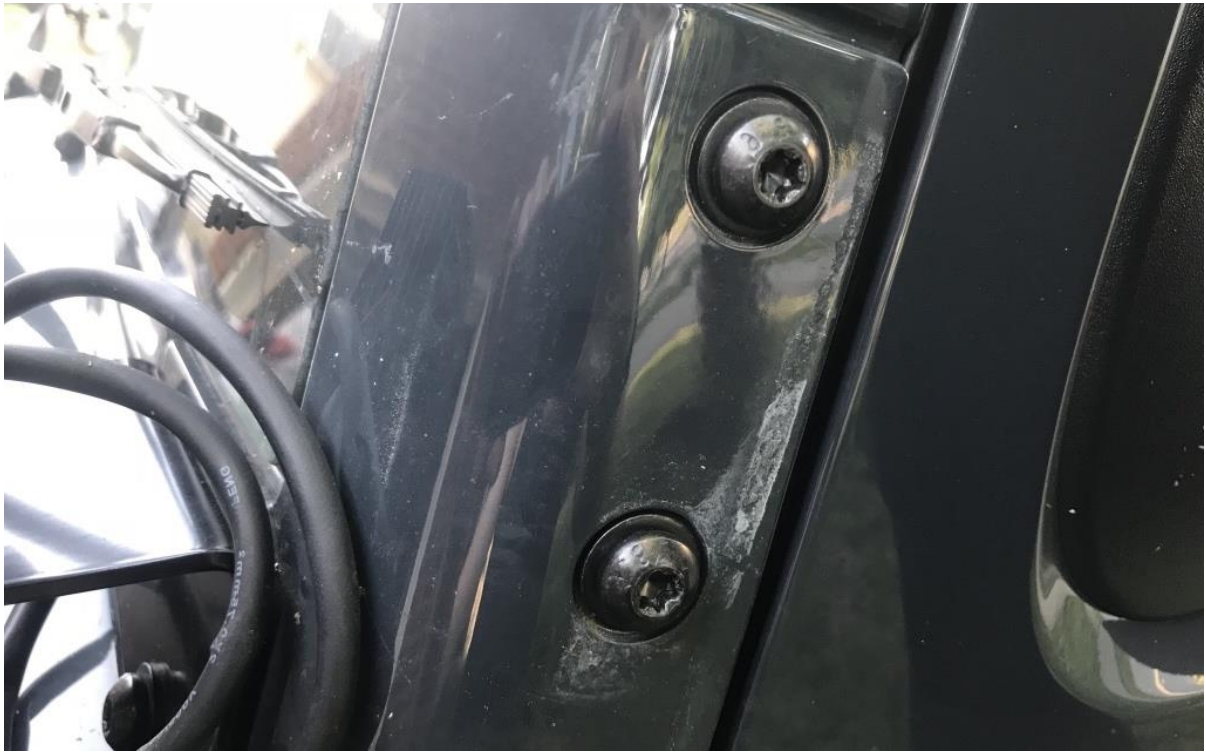
Figure G

8. Using a 13mm wrench, tighten the bolt down (Figure H).



Figure H

9. Repeat Steps 2-8 on the other side.



Before



After

Installation Instructions Written by ExtremeTerrain Customer J. Sandlin 06/10/2018