

Rugged Ridge Muffler Skid Plate

Installation Guide for Jeep Wrangler '07-'16 2-Door JK

Installation Time: 1 Hour

Tools Required:

- ✓ Box Cutter/Knife
- ✓ 16mm Socket
- ✓ 18mm Socket
- ✓ Socket Wrench

Installation Instructions:

1. Carefully open the package using a box cutter or knife (Figure A) and ensure the hardware is included and undamaged.



Figure A

2. Slide the mounting bracket between the frame and exhaust (Figure B). Position the mounting tabs of the brackets onto the inner studs of the body mount.

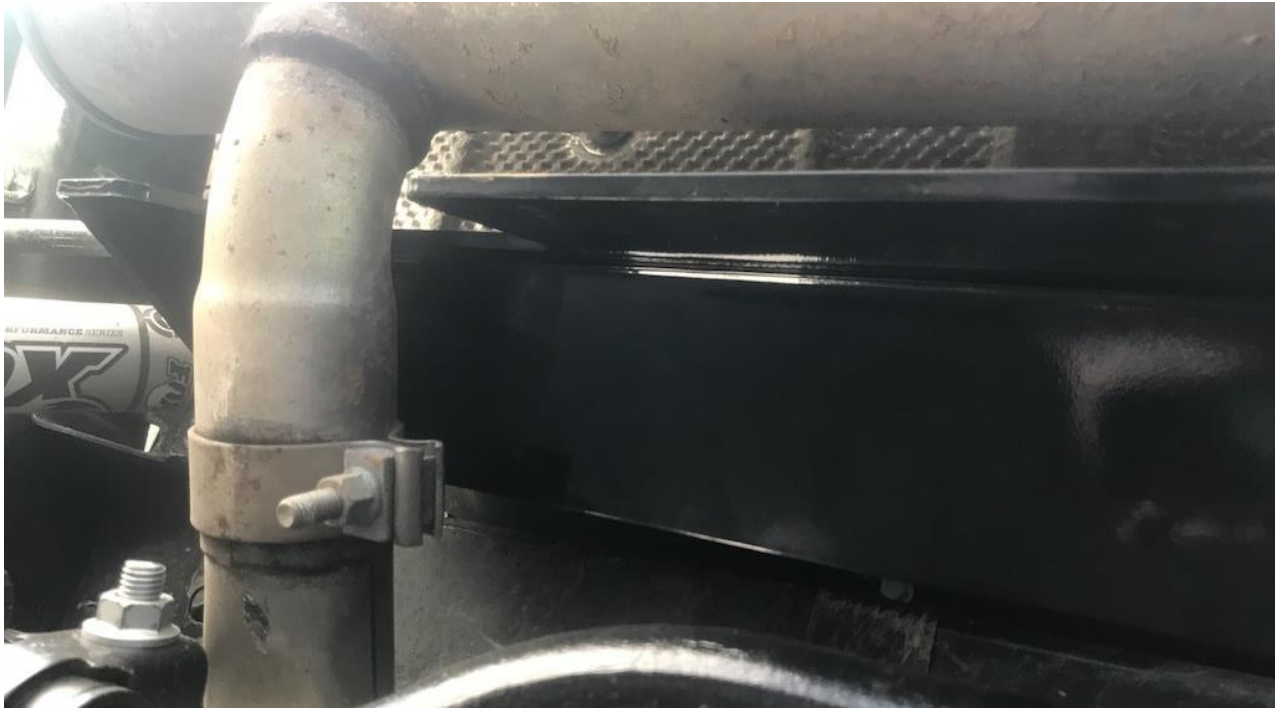


Figure B

3. Slide the nut plate (supplied) on top of the cross member of the vehicle frame (Figure C).



Figure C

4. Place an M10 spacer (supplied) between the frame and mounting bracket then attach the M10 bolt and washer (supplied) (Figure D). Don't over-tighten.



Figure D

5. Remove the bumper mounting bolts. Position the skid plate under the muffler with the center cut-out facing the rear of the vehicle and mount in place using the bumper mounting bolts removed in Step 4 (Figure E). Don't over-tighten.



Figure E

6. Thread each M12 bolt and washer (supplied) through the mounting bracket to the skid plate (Figure F). With all three in place, tighten each (Figure G).

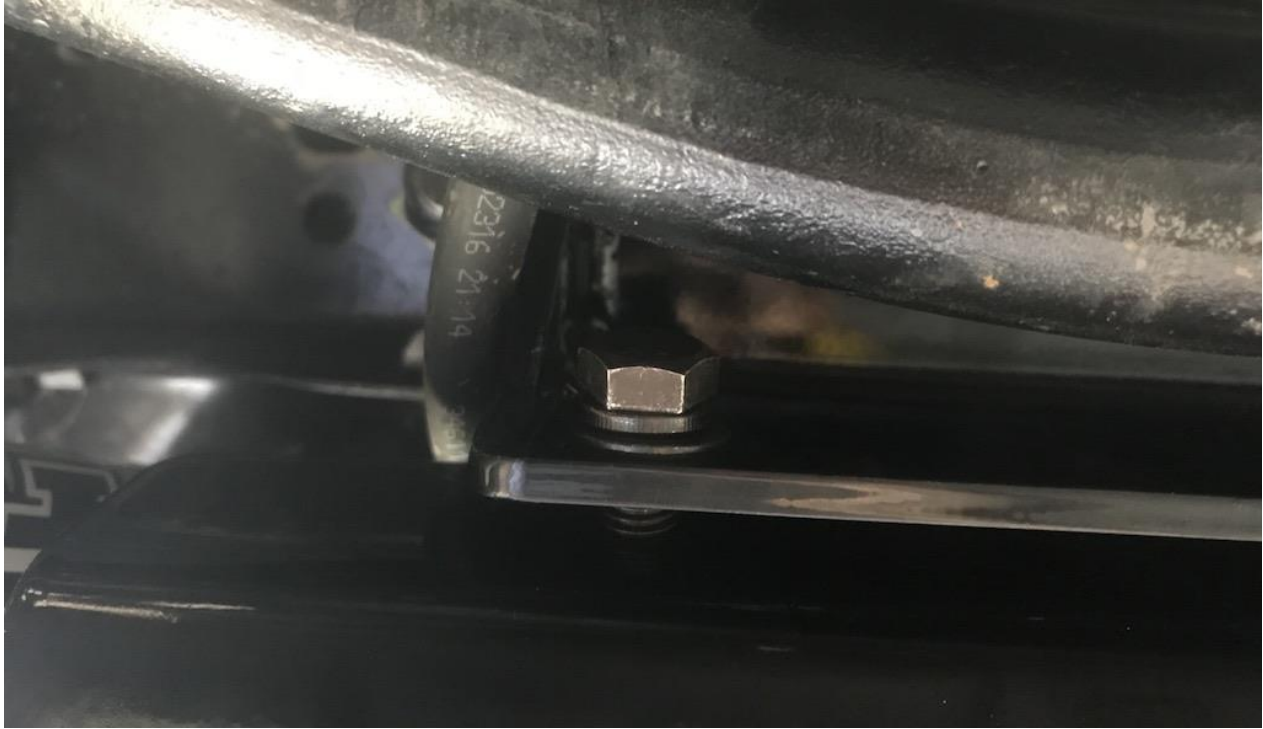
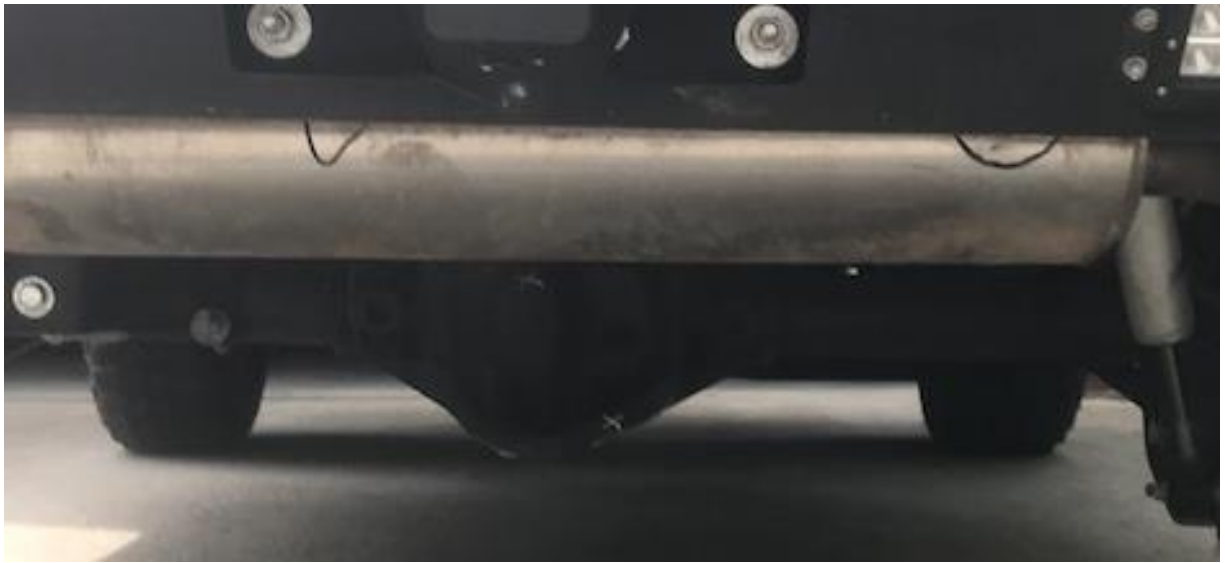


Figure F



Figure G

7. Tighten all bolts and nuts so that skid plate sits securely.



Before



After

Installation Instructions Written by ExtremeTerrain Customer J. Sandlin 05/10/2018