

Rugged Ridge All Terrain Modular Front Bumper

(Item # J20873, Rugged Ridge 11542.02)

Installation Time: 1 Hour

Tools Required:

- ✓ Ratchet
- ✓ Ratchet Extension
- ✓ ¾ Socket
- ✓ Phillips Screw Driver



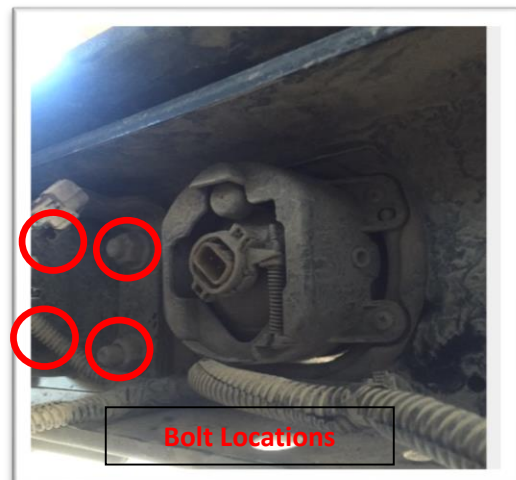
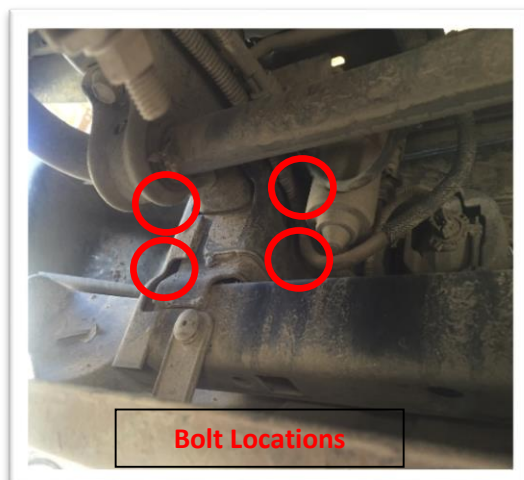
Inside the Box:

- ✓ Bumper Shell
- ✓ M12x60 Bolt (8)
- ✓ M12 Washer (8)
- ✓ M12 Nut Plate (4)
- ✓ Sheet Metal Screws (8)
- ✓ M8 Flat Head Bolt (4)
- ✓ M8 Washer (4)
- ✓ M8 Nut (4)
- ✓ Cover Plate

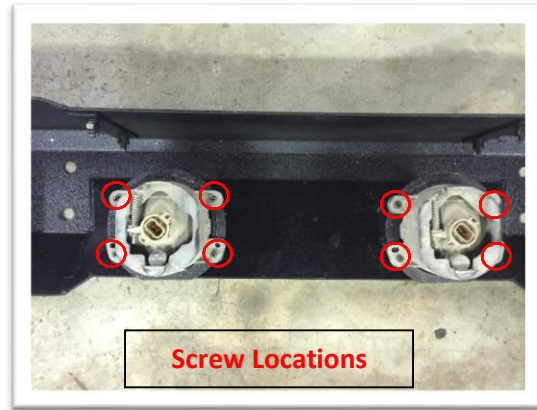
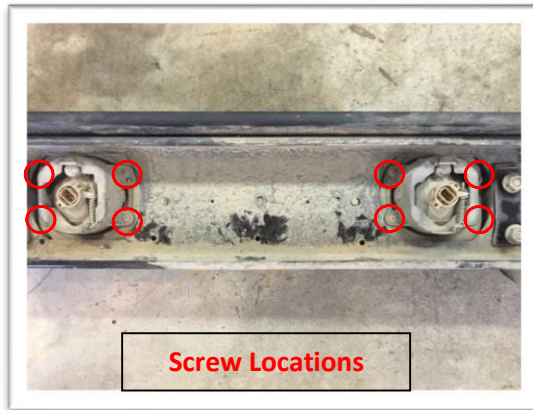


Installation Instructions:

1. Remove Factory bumper. There are 8 nuts which hold the bumper onto the chassis. Also be sure to disconnect the wiring plug from the fog lights and free the wiring conduit from the bumper. See below for bolt locations.



2. Unscrew the fog lights from the factory bumper and reinstall them on the new bumper using the provided sheet metal screws. See below.



3. Attach the bumper to the frame rails using the nut plates and M12 hardware. Tighten evenly. See below.



4. Installation Complete!

