

Rugged Ridge Black Lower Door Hinge Installation Guide (87-06 Wrangler YJ & TJ)

Installation Time: 30 Minutes

Tools Required:

- ✓ T40 star bit
- ✓ 3/16 Allen

Installation Instructions:

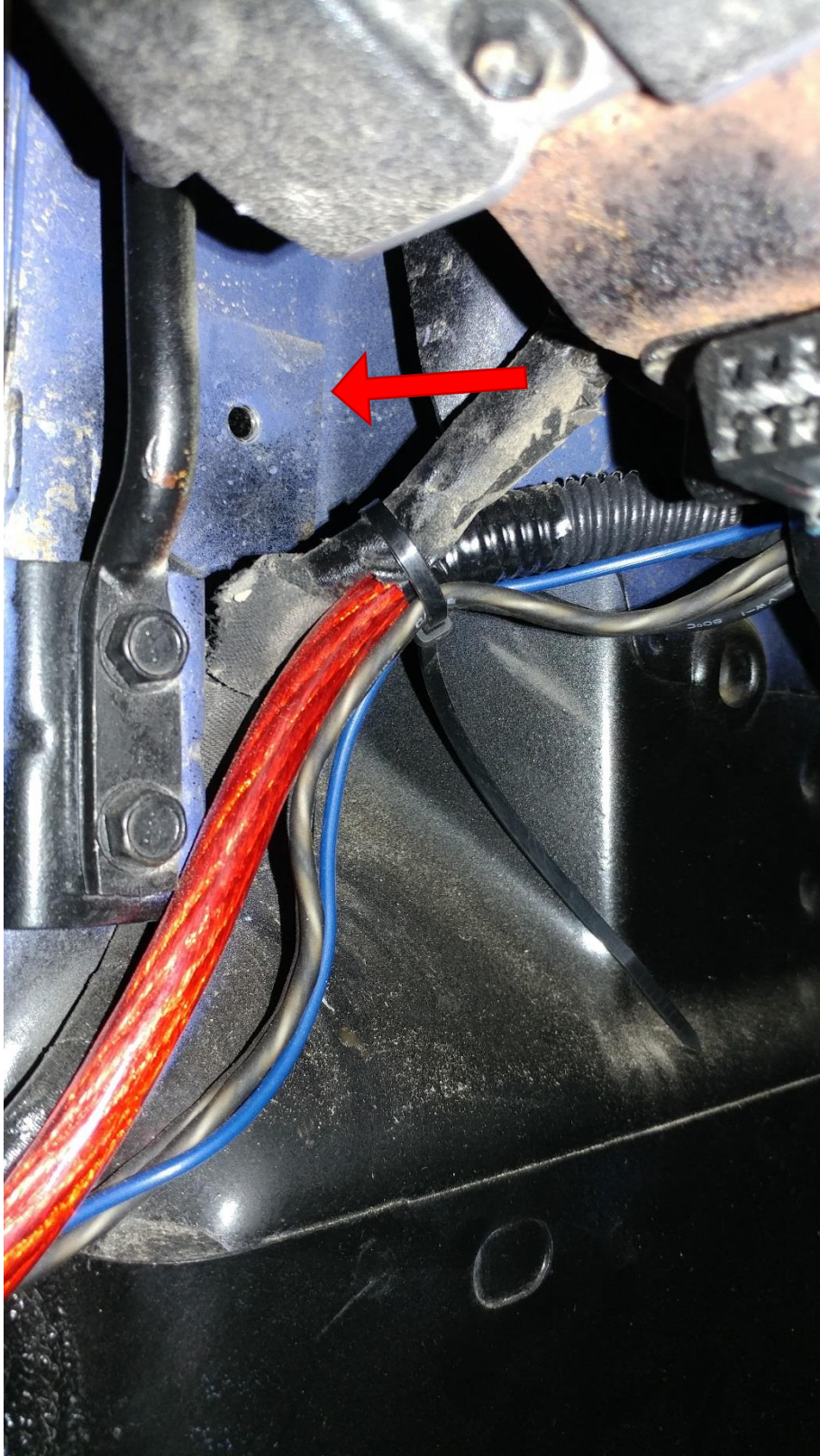
1. Before, factory hinge was worn and slightly rusted.



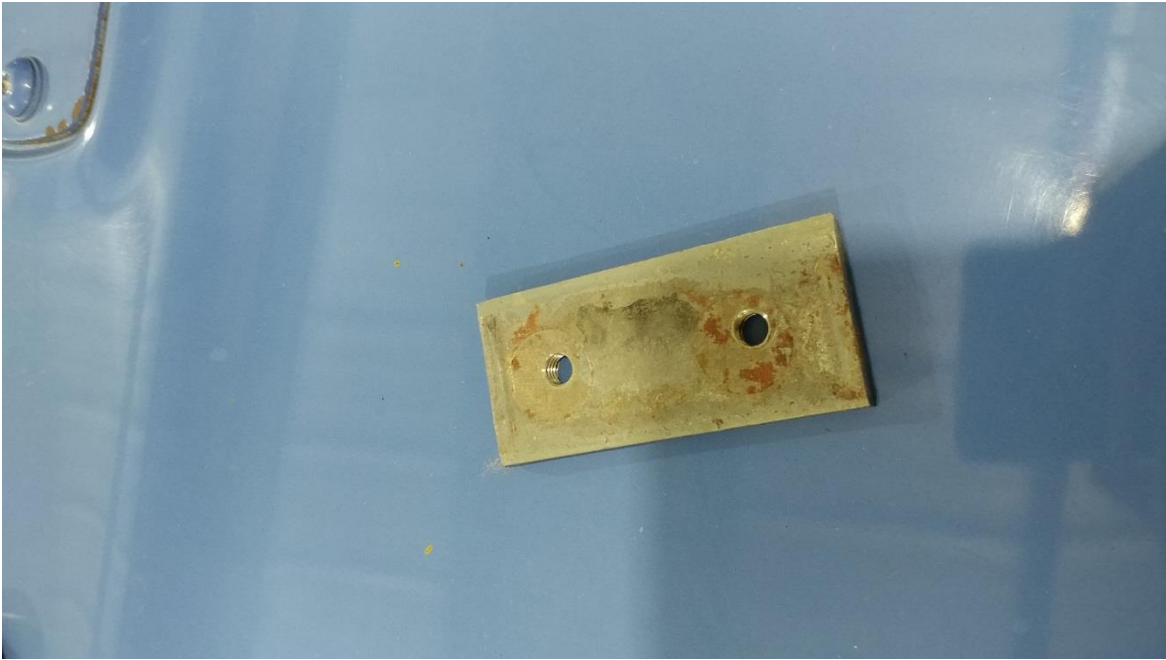
2. Removed the doors for easy access.
3. Remove the 2 factory T40 star bit bolts.



4. The bolts are held in by a backing plate that is not secured to the body. But can be easily accessed, near the door limiting strap attachment.



5. The backing plate will fall out after the bolts are removed.



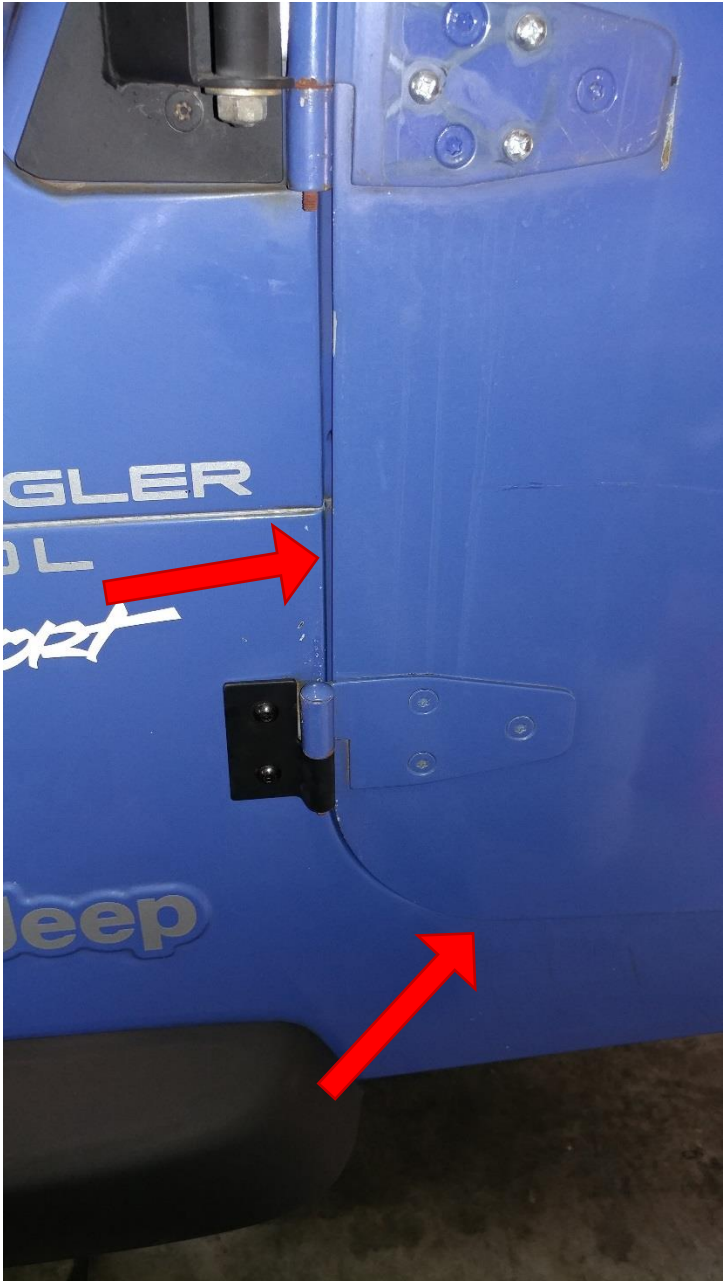
6. Cleaning the area would be recommended.



7. Insert the provided 3/16 Allen bolts in the new Rugged Ridge Black Lower Door Hinge. While holding the backing plate in place.



8. Do not tighten the provided 3/16 Allen bolts. Leave them loose and reinstall the door.



9. You will need to use the door to even out the door gaps. When the gaps are even and the door can close, tighten the provided 3/16 Allen bolts. **Even with the door closed pressure will have to be applied to even out the gaps.



10. After the provided 3/16 Allen bolts are tight installation is complete.



Installation Instructions Written by ExtremeTerrain Customer T. Boyer 10/19/2017