

## Rugged Ridge 3 in. Square LED Lights w/ X-Clamp - Dual Beam

### Installation Guide for Jeep Wrangler '07-'16 2-Door JK

**Installation Time:** <1 Hour

**Tools Required:**

- ✓ Box Cutter/Knife
- ✓ Crescent Wrench
- ✓ Wiring Harness

**Installation Instructions:**

1. Carefully open the package using a box cutter or knife (Figure A) and ensure both LED Lights, X Clamps, and hardware are included and undamaged.



Figure A

2. Place the exterior piece of the X Clamp on the tube to be mounted against (Figure B).



Figure B

3. Using the four bolts (provided), connect the interior piece of the X Clamp to the exterior piece with the tube in between and tighten using the supplied Allen wrench (Figure C).



Figure C

4. Using the smallest supplied bolt, connect the light tray to the X Clamp (Figure D).



Figure D

5. Connect the LED light to the light tray using a crescent wrench to keep LED light in place (Figure H).



Figure H

6. Connect the wiring harness (not supplied) positive (red) lead to the positive (+) battery terminal and the negative (black) lead to the negative (-) battery terminal then run the harness to the mounting location of the

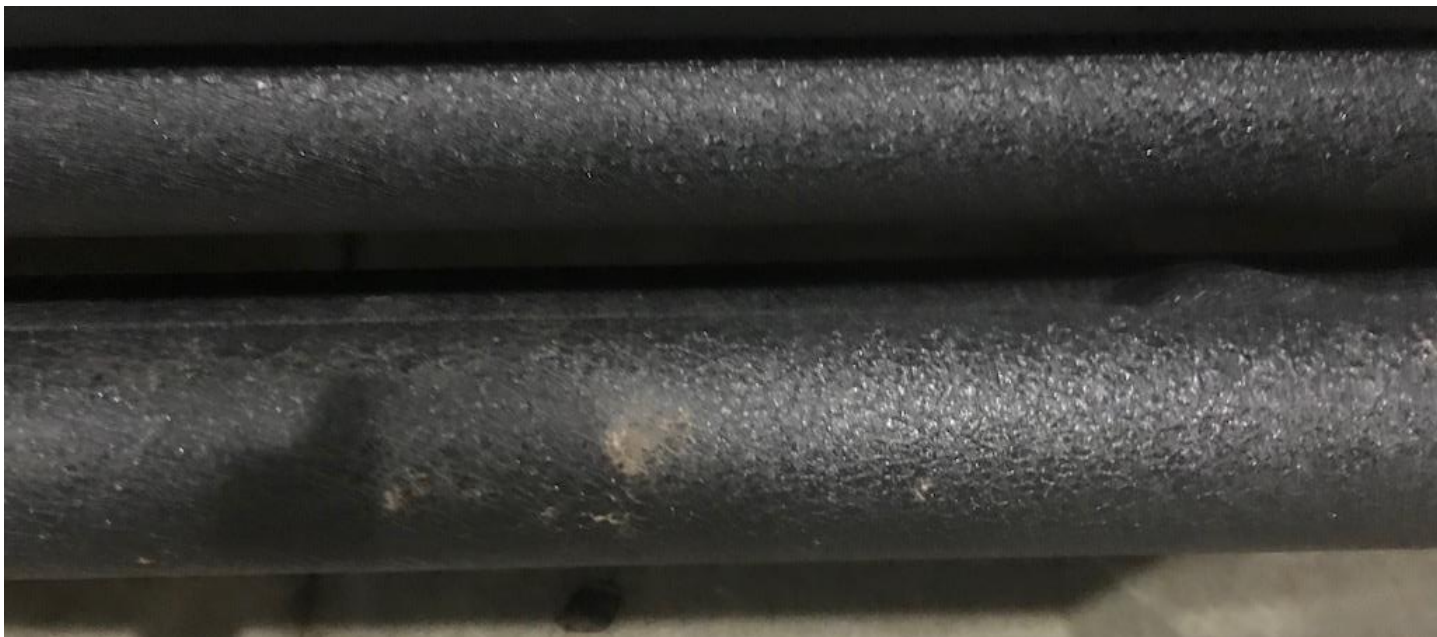
lights. **Note:** The harness connection point for these lights also comes with a yellow lead for tapping into the vehicle's high beams or fog lights, if desired.

7. Connect the light to the wiring harness (Figure I).



Figure I

8. Follow Steps 2-10 for the second light, as well.



Before



After

Installation Instructions Written by ExtremeTerrain Customer J. Sandlin 12/13/2017