

Rugged Ridge Spartacus Heavy Duty 8,500 lb. Winch w/ Steel Cable

Installation Time: 120 Minutes

Tools Required:

- ✓ 2.5 mm Allen (provided)
- ✓ 9 mm Allen
- ✓ 14 mm Socket
- ✓ 18 mm open end wrench
- ✓ 18 mm socket
- ✓ 16 mm socket
- ✓ Pliers
- ✓ 19 mm socket
- ✓ Anti-seize

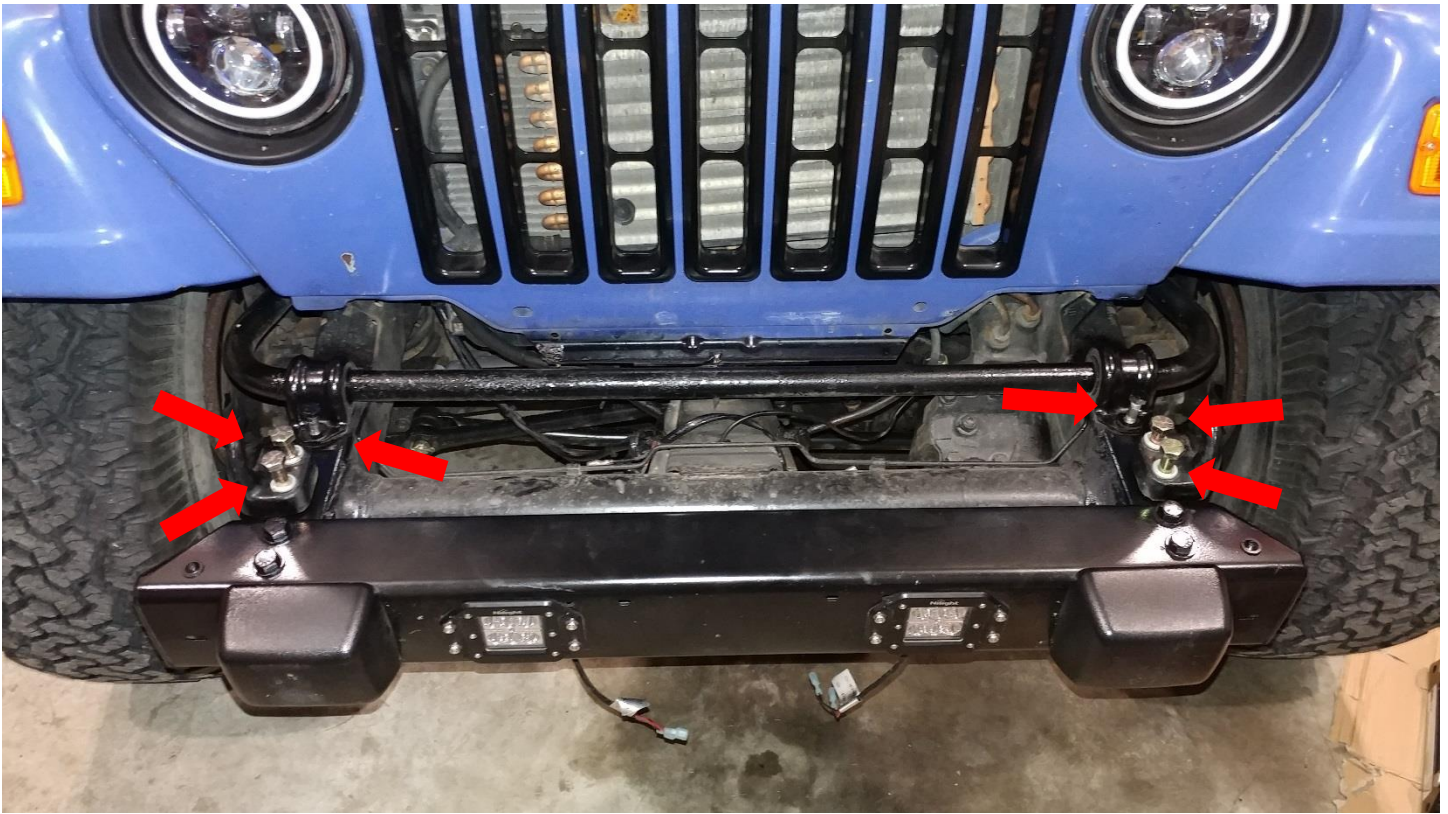
Your Jeep will need a winch ready bumper or winch plate to complete the installation. Shown in this guide is the Rugged Ridge Raised Winch Plate (87-06 Wrangler YJ & TJ) Item J13884, MPN# 11238.12. I planned for the winch plate installation, my factory bumper is off set to flush up with the fairlead. This also accommodates the flush mounted fog lights.

Installation Instructions:

1. Before



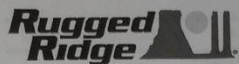
2. Remove 6 bolts. 4 – 19 mm bumper bolts, 2 – 16 mm sway bar bolts



3. What comes with the Rugged Ridge Spartacus Heavy Duty 8,500 lb. Winch w/ Steel Cable



4. I chose the Solenoid Mounting Supplement 3.

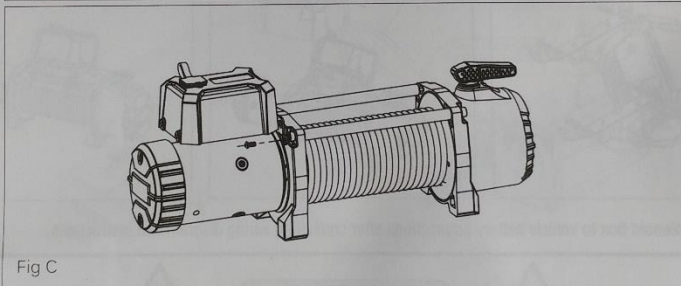
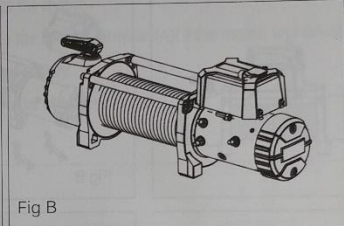
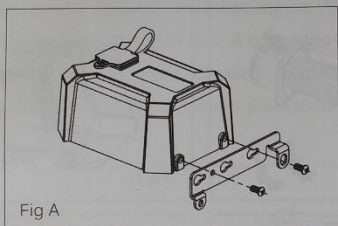


Solenoid Mounting Supplement 3

Step 1: Loosen the bolt on the side of solenoid box and place the small mounting bracket at the side of solenoid box, tighten the bolt. (Fig A)

Step 2: Loosen the tie rod bolt at the motor side, and place the control box in the desired location, and then tighten the bolt. (Fig B)

Step 3: Tighten the logo bar bolt at the motor side. Installation is complete. Use the wire diagram in the instruction manual for further assembly. (Fig C)



5. Locate this bracket in the supplied hardware bag.



6. Remove 1 and loosen the other – 2.5 mm allen screws from the solenoid box opposite the winch remote connection.



7. Install the bracket



8. Remove one 9 mm allen screw from the rear winch post



9. Locate one 2.5 mm screw in the provided hardware



10. Mount the solenoid box onto the winch





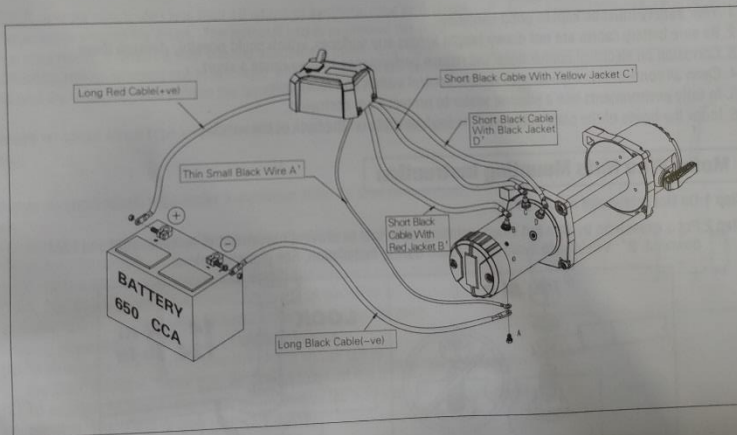
11. The electrical studs are color coded to match the boots on the wire.

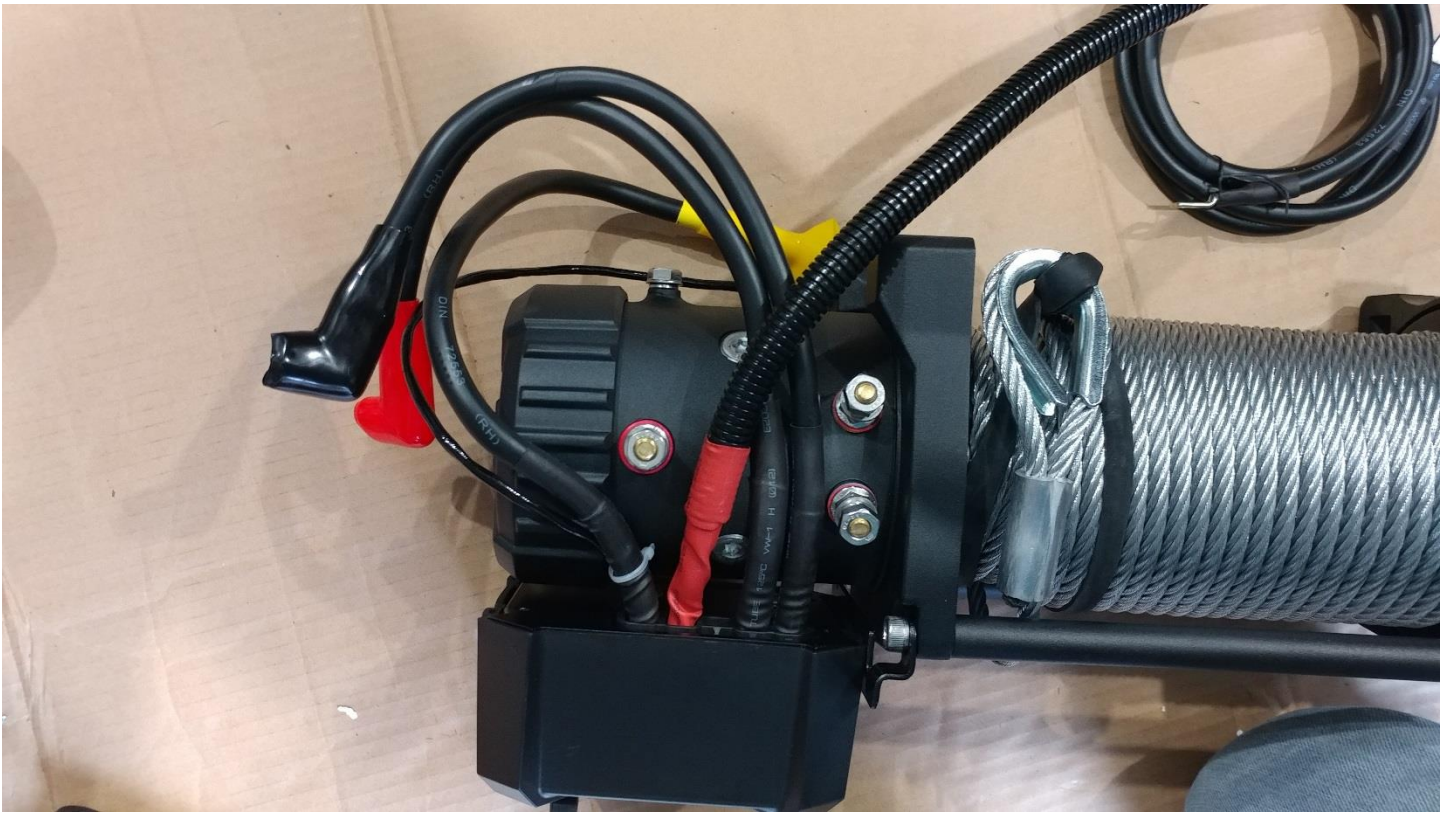
Electrical Connection

For normal self-recovery work, your existing electrical system is adequate. A fully charged battery and proper connections are essential. Run the vehicle engine during winching operations to keep battery charged.

Pay close attention to proper electrical cable connection as follows (refer to Diagram 1)

1. Short black cable with red jacket (B) connecting to the red terminal (B) of the motor.
2. Short black cable with yellow jacket (C) connecting to the yellow terminal (C) of the motor.
3. Short black cable with black jacket (D) connecting to the black terminal (D) of the motor.
4. Thin black cable (E) connecting to bottom terminal (A) of the motor.
5. Long Black Cable (1.8m), one terminal (A) connecting to the bottom terminal (A) of the motor, and the other terminal negative (-) connecting to negative (-) terminal of battery.
6. Long red cable positive (+) connecting to positive (+) terminal of battery.







12. Using the provided hardware mount the fairlead to the which plate. 18mm open end wrench and 18mm socket





13. Insert the provided square nuts into the winch feet.





14. Mount the winch to the winch plate using the provided 16 mm bolts





15. Cut the rubber band holding the cable in place.



16. Feed the crimped end of the winch cable through the fairlead.



17. Attach the hook to the crimped cable end by removing the counter key with pliers and pulling the pin.





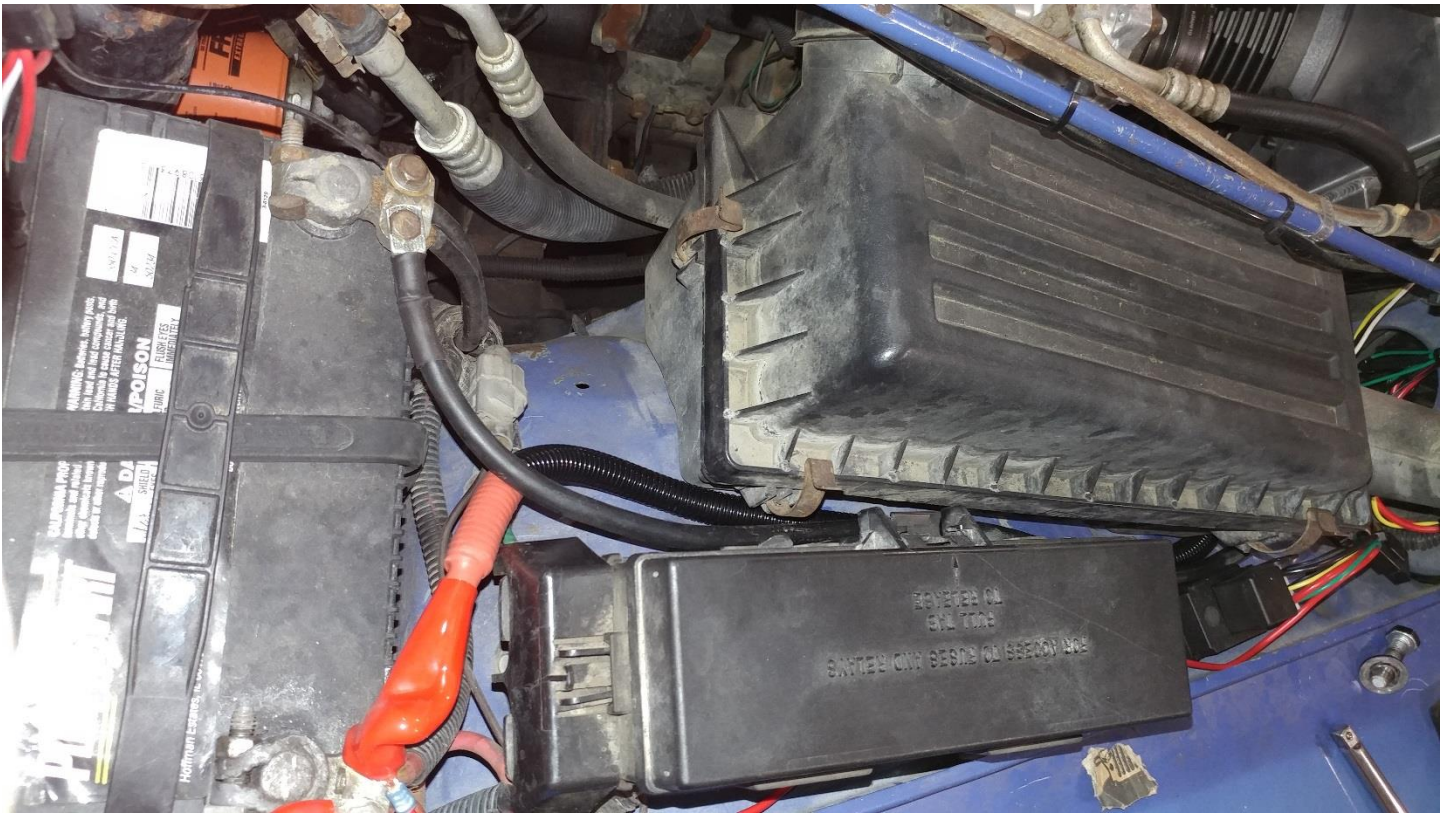


18. Mount the winch plate to the frame rails, using the factory bumper bolts (19 mm) and sway bar bolts (16 mm)



19. Route the positive (RED) and negative (BLACK) cables to the battery. I found that there was a "channel" along the air box then between the air box and fuse box.





20. Plug in your winch remote. Installation complete

