

Title of Installation Guide

Installation Time: 1 hr

Tools Required:

- ✓ Screw Driver
- ✓ Socket Wrench
- ✓ 16mm open wrench
- ✓ 16mm socket
- ✓ 19 mm open wrench
- ✓ 19mm socket

Installation Instructions:

Remove Bumper

1. On each side of the bumper are two 16mm bolts connecting the frame to the bumper. Use a 16mm socket to remove both on each side of the vehicle

Driver side



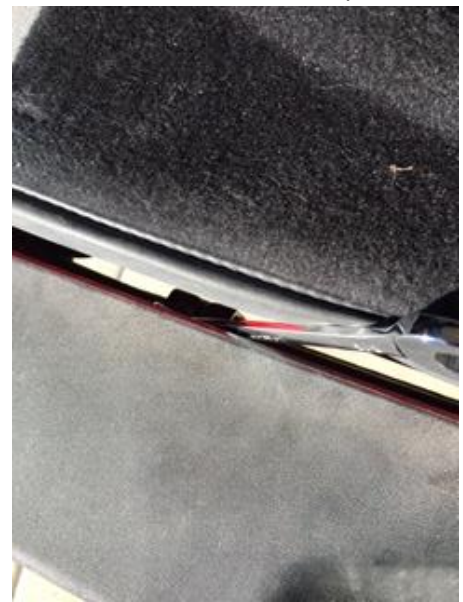
Passenger side



2. Move along the rear cross member and remove the two 16mm bolts connecting the bumper brackets to the rear cross member



3. Using a 16mm wrench, remove the top bolt of the rear cross member bracket attached to the bumper



4. Slide bumper off of frame and set to the side



Install Receiver Hitch:

1. Position the receiver hitch in the middle of the rear cross member and attach using the supplied hardware:
 - a. Insert bolts and washers with a washer on each side of the rear cross member and secure with lock nut



- b. Secure lock nut with a 19mm wrench and tighten using an 18mm socket. Requires 80 ft. lbs of torque



- c. Attach supplied hitch plug



Install Wiring Harness:

1. Remove driver side tail light using a standard screw driver



2. Unplug wiring harness from light



3. Connect trailer receiver wiring harness to existing male and female connectors



4. Feed wiring harness into the cavity and through the foam panel at the bottom of the cavity



5. Insert connector into tow hitch plug notch located on the receiver hitch



6. Thread wiring harness along the frame by finding the 8mm holes in the rear cross member and inserting retainer clips



7. Reinstall driver side taillight using a standard screw driver



8. Reinstall bumper by reversing earlier instructions

Finished Installation (before and after):



Installation Instructions Written by ExtremeTerrain Customer Nathan Schulman - 01/08/2017