

Rock Krawler Adjustable Rear Upper Control Arms (07-18 Wrangler JK)

Note: You might need a friend to help tighten the jam nuts.

Installation Time: 2 Hours

Tools Required:

- ✓ Sockets: 7mm, 21mm, socket extension.
- ✓ Socket wrench
- ✓ 19mm lug wrench
- ✓ Breaker bar
- ✓ Torque wrench
- ✓ 1 5/16" crowfoot wrench
- ✓ Large adjustable wrench
- ✓ Anti-seize
- ✓ Loctite
- ✓ Tape measure
- ✓ Angle finder
- ✓ Large screwdriver
- ✓ Dremmel
- ✓ Grease gun (with 000 grease)

Before Picture:

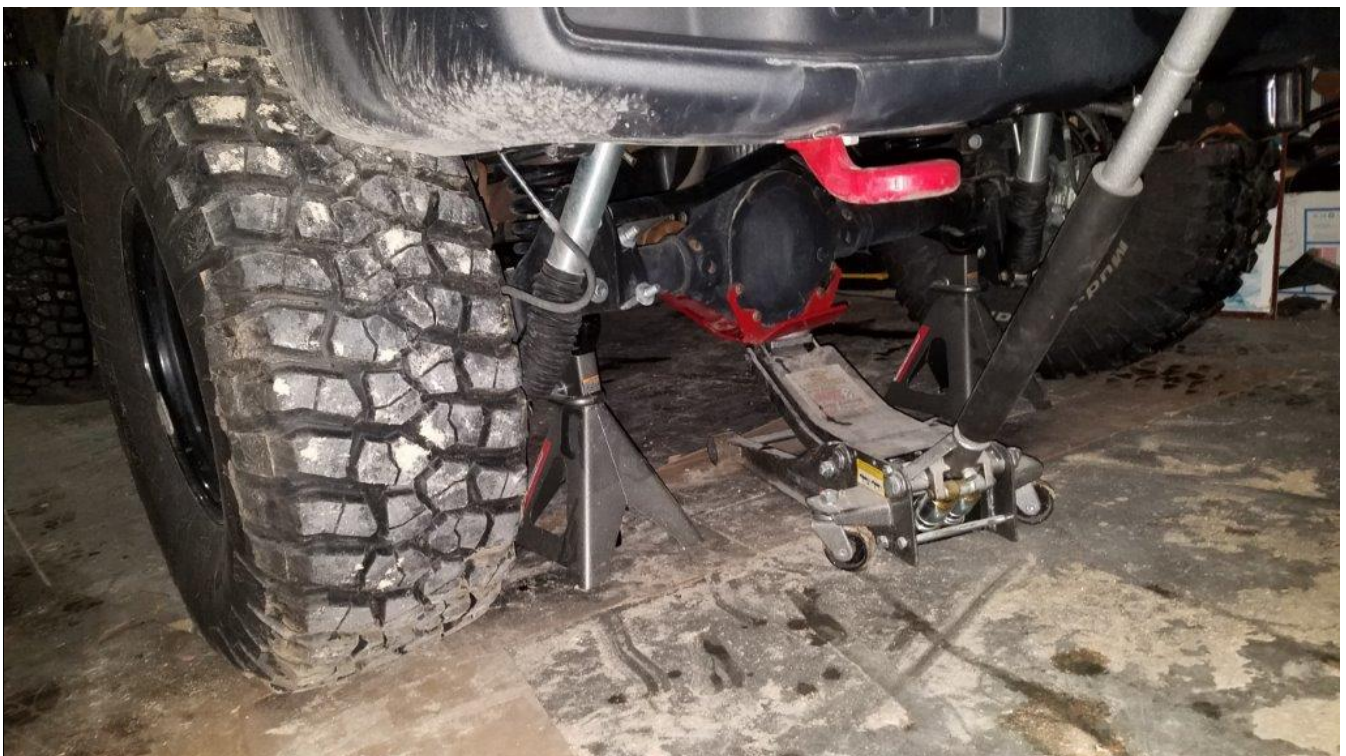


Installation Instructions:

1. Start by unscrewing the joints and putting anti-seize on the threads. This will keep them adjustable years down the road.



2. Make sure you are parked on level ground. Use a lug wrench to break loose the lug nuts for both rear wheels. Then use a jack to lift the rear axle. Remove both wheels, then support the axle on each end using jack stands. Make sure the stands hold the axle at about the same height the wheels did.



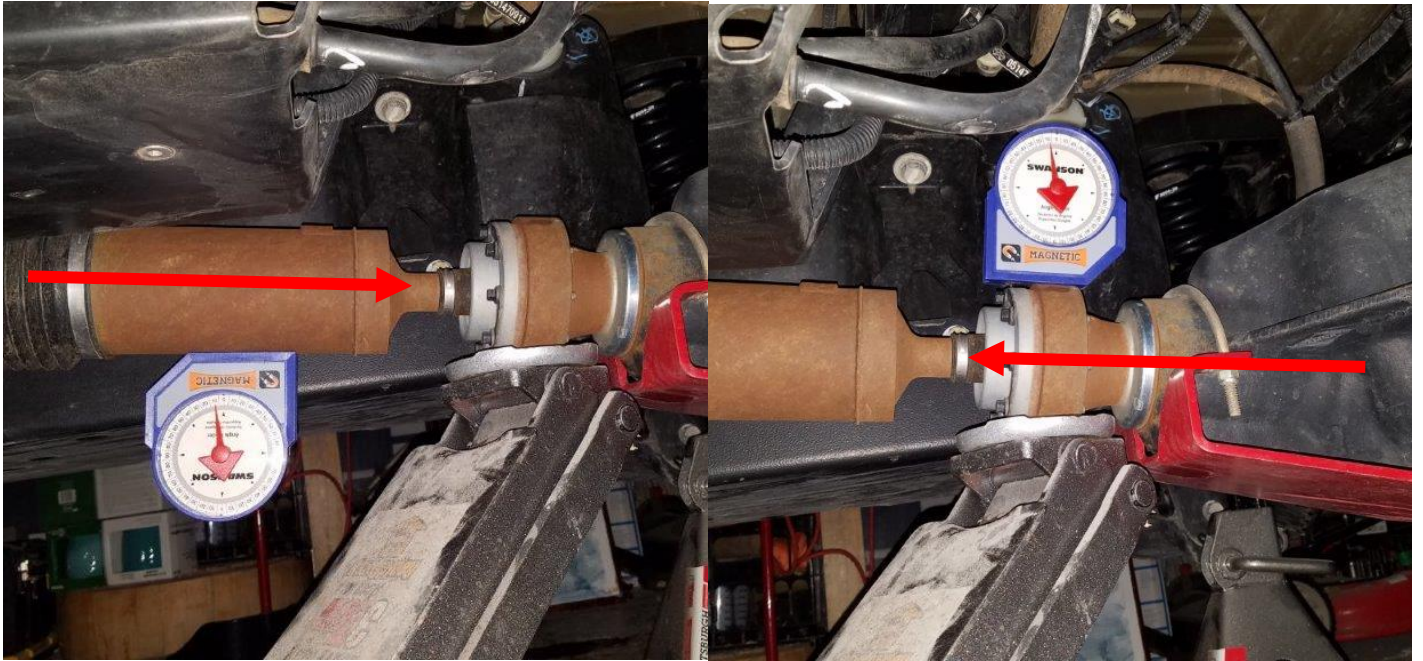
3. Place a jack where the driveshaft connects to the differential as shown. Lift the jack just enough to support but not lift it.



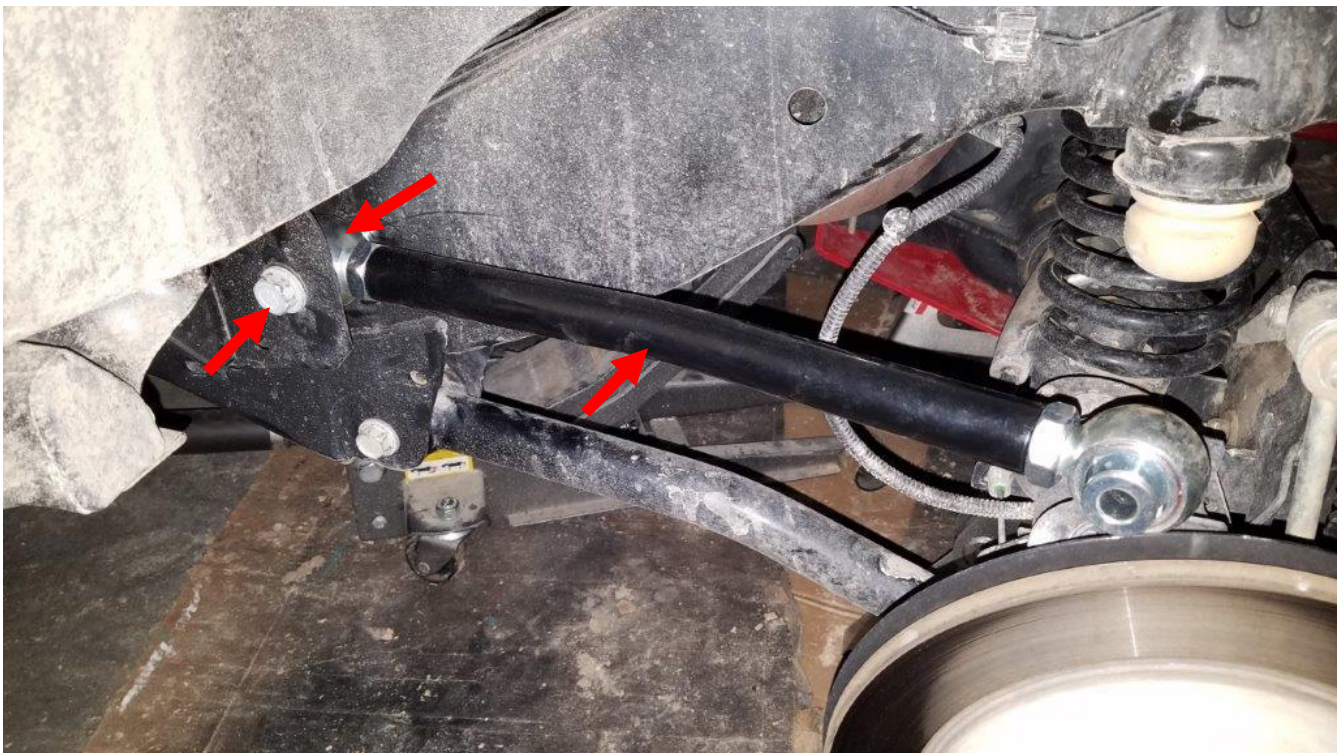
4. Use a 21mm socket to remove the driver side control arm bolts, then remove the control arm. Remove both bolts and both flag nuts, then remove the control arm. Repeat this step on the passenger side.



5. Now using the jack supporting the front end of the differential, lift it until the pinion is aligned with the driveshaft. Use an angle finder placed as shown below to ensure both angles are equal or at least within 1-2 degrees. *Note: This type of driveshaft alignment is best for the stock CV driveshaft. If you have an aftermarket driveshaft, align it using manufacturer instructions.*



6. Next, place one of your new control arms in the frame bracket and insert the mounting bolt. Then adjust both ends until the axle side lines up with the axle bracket perfectly. Ensure the bend in the arm is toward the frame, and ensure the frame side grease fitting is pointed upward. This is the correct length for your control arm. Hand tighten the jam nuts and remove the control arm.



- Using the control arm from step 6, adjust the other control arm to the exact same length. Then apply red Loctite to all 4 jam nuts.



- Now you will need to tighten the jam nuts to 200ft/lbs. I recommend having a friend help you. Using a large screwdriver or long socket extension, hold both joints straight. Using a 1 5/16" crowfoot and torque wrench, tighten the jam nuts. Make sure you do so while holding the joints as straight as possible. Do this for both control arms.



9. Then use a 7mm socket to install the 4 grease fittings. Be careful not to overtighten them. I also recommend greasing them while you're at it. Use only 000 grade grease for Rock Krawler joints.



10. When you reinstall the arms, be sure that the joints are strait as possible as shown below. If not you will need to adjust them.



11. Now install both control arms. Install the factory bolts and flag nuts as shown. See step 12 for more details on the frame side flag nut.



12. On the driver side, you will be able to see where to place the frame side flag nut by looking through the view hole as shown below. Notice at the top there is a small slot for the tab to slide into. Using this view hole, align and tighten the driver side flag nut. Then repeat on the passenger side, but you will not have a view hole to help line it up so be patient and align it by feel.



13. Now torque all 4 control arm mount bolts. Using a 21mm socket and a torque wrench, tighten them to 125ft/lbs.
14. Last, reinstall both wheels and tighten the lug nuts to 100ft/lbs. Remove the jack and jack stands then take it for a test drive.

After Picture:



Installation Instructions Written by ExtremeTerrain Customer John Parker 3/4/2018