

Rightline Gear Side Storage Bag

Installation Guide for Jeep Wrangler '07-'16 2-Door JK

Installation Time: 1 Hour

Tools Required:

- ✓ Box Cutter/Knife

Installation Instructions:

1. Carefully open the package using a box cutter or knife (Figure A) and ensure the bag, insert and strap are included and undamaged.

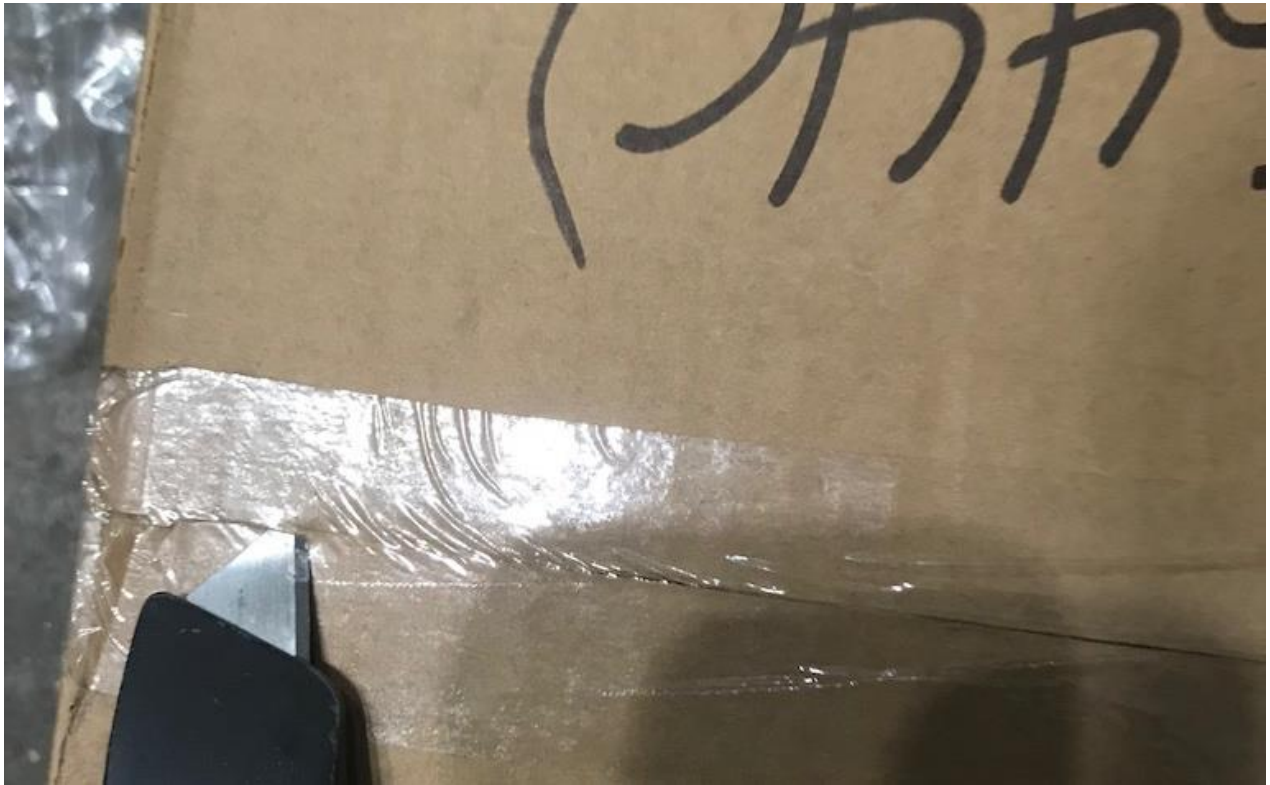


Figure A

2. Slide the hard-plastic insert (included) into the top sleeve (Figure B).



Figure B

3. Place the bag above the wheel well behind the driver's seat (Figure C).



Figure C

4. Run the rear-facing, bottom strap around the base of the rear vertical roll bar (Figure D) and buckle it back to the bag (Figure E).



Figure D



Figure E

5. Run the rear-facing, top strap around the rear vertical roll bar, above the seat belt holder, and buckle it back to the bag (Figure F).



Figure F

6. Run the front-facing, top strap around the front vertical roll bar, above the seat belt (Figure G) and buckle it back to the bag (Figure H).



Figure G



Figure H

7. Tighten all the straps in place (Figure I).



Figure I

- Optional: Attach the included carry strap by pulling down on the clasp and placing it over the top D-ring (Figure J) on both top-facing D-rings.



Figure J



Before



After

Installation Instructions Written by ExtremeTerrain Customer J. Sandlin 11/15/2017