

RedRock 4x4 Dual Outlet Axle-Back Exhaust w/ Polished Tips - Installation Guide

Installation Time: 45 - 60 Minutes

Tools Required:

- ✓ Socket wrench with deep well 9/16 and 5/8 sockets
- ✓ Lubricant (PB Blaster, WD-40 or other lubricant)
- ✓ Large Tongue-and-Grove Pliers or Exhaust/Muffler Hanger Pliers
- ✓ Hammer
- ✓ Optional: Breaker Bar

Component List:

- 1 – Muffler Assembly
- 2 – Polished SS Tips
- 3 – 2.5" Band Clamps

Important Note: Let the factory muffler cool down to prevent yourself from getting burned if you've been driving. Spend money on Jeep® parts, not ER visits.

Before Install



Installation Instructions:

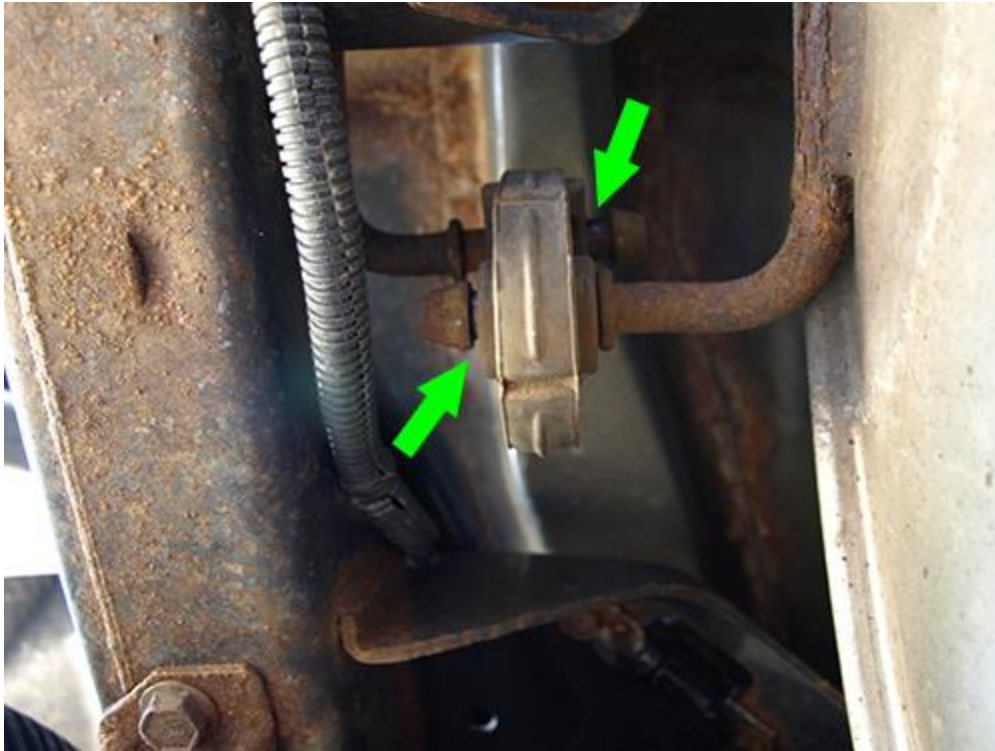
1. Locate the bolt that is holding the factory muffler to the exhaust pipe.



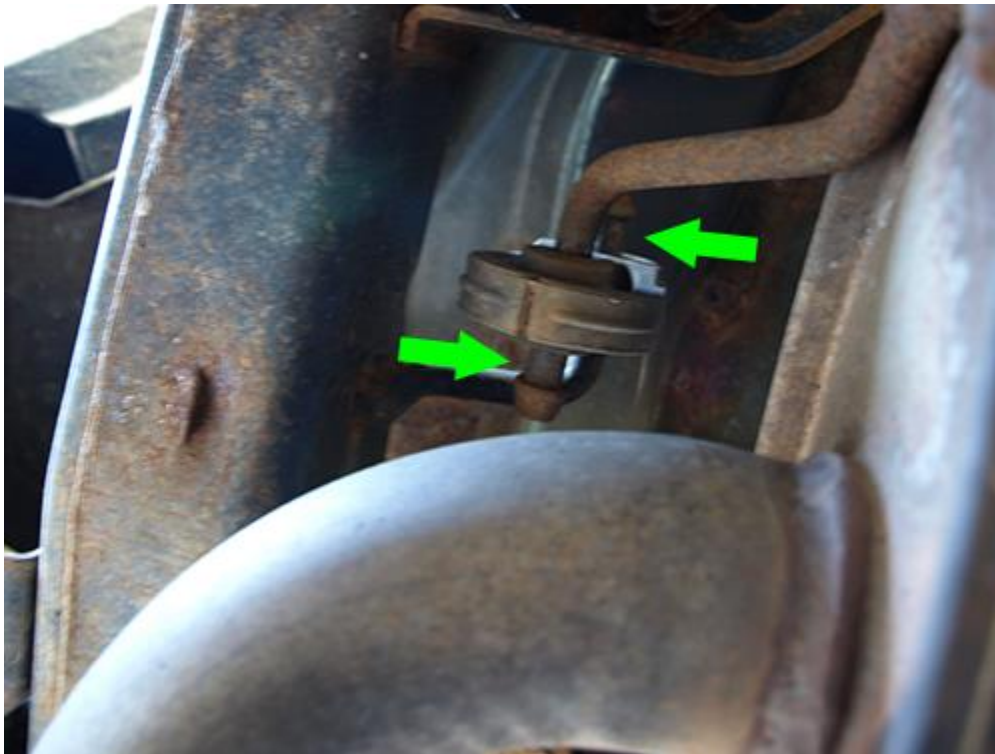
2. Break free the nut that is holding the factory band clamp to the exhaust pipe using a socket wrench and 9/16 deep well socket. If the nut is extremely rusted, you may need to use a breaker bar to assist with breaking the nut free. Use a hammer to break the bolt free from the factory clamp.



3. Spray a lubricant on both driver side factory hangers and work the lubrication into the factory rubber hanger. Work the bottom metal hanger attached to the muffler through the rubber hanger using a Large Tongue-and-Groove Pliers or Exhaust/Muffler Hanger Pliers.



4. Spray a lubricant on both passenger side factory hangers and work the lubrication into the factory rubber hanger. Start to work the top hanger attached to the Jeep® through the rubber hanger using a Large Tongue-and-Grove Pliers or Exhaust/Muffler Hanger Pliers. There is more room to work with the top hanger than the bottom one.



5. Twist and pull the factory muffler until it slides off the exhaust pipe once it's free from hangers on both sides.



6. Remove the passenger side factory hanger from the factory muffler.



7. Place a 2.5" band clamp, with the nut facing down, on the exhaust pipe of the RedRock 4x4 Exhaust that will attach to the factory exhaust pipe.



8. Twist the RedRock 4x4 Exhaust until it slides onto the factory exhaust pipe. Do not tighten the nut yet.



9. Slide the factory rubber hanger that is attached to the RedRock 4x4 Exhaust onto the passenger side metal hanger that is attached to the Jeep®. Make sure it slides all the way onto the metal hanger.



10. Slide the RedRock 4x4 Exhaust metal hanger through the factory rubber hanger to the driver side hanger on the Jeep®. Make sure it slides all the way on to the rubber hanger.



11. Tighten the nut for the 2.5" band clamp with a socket wrench and 5/8 deep well socket.



12. Slide a 2.5" band clamp on each end of the SS tips as shown below.



13. Slide one SS Tip onto the driver side of the RedRock 4x4 Exhaust outlet. Align the tip to your personal preference and tighten the nut for the 2.5" band clamp with a socket wrench and 5/8 deep well socket.



14. Repeat step 13 on the passenger side, and double check the alignment of both SS Tips.



After Install



Installation Instructions Written by ExtremeTerrain Customer Brian Voelzke 09/22/2018