

Raxiom LED Headlights

Installation Time: ½ hour

Tools Required



- ✓ 15mm Torx head
- ✓ Small flat head screwdriver or plastic pry tool
- ✓ Electrical tape (optional)

Installation Instructions:

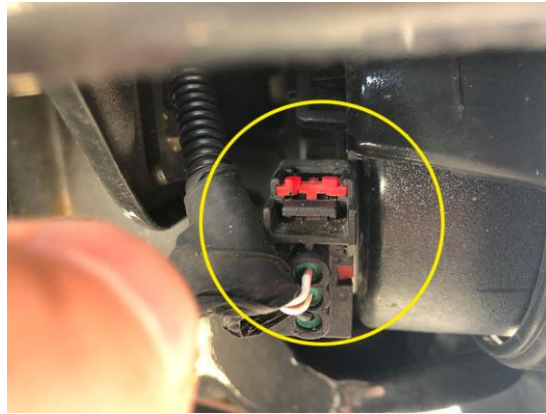
1. Start by opening and lifting the hood.



2. Remove the (6) plastic fasteners along the top rail of the grille. These are removable plastic rivet-style fasteners, so they require the removal of the center plug first. Use the small flat-head screw driver or plastic pry tool to remove the center plug, followed by the fastener body.



3. Unplug the (2) front turn signals attached to the grille. The plugs can be accessed from the side of the Jeep. Push back the red safety tab to unplug the lights.



4. Remove the grille by pulling along the bottom to pop-out the metal pressure tabs located on the bottom channel of the grille.



5. Using the 15mm Torx bit, remove the (4) screws holding the retaining ring around both headlights.



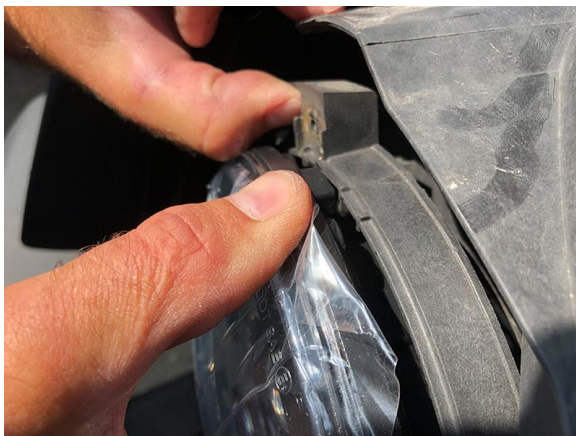
6. Unplug the factory headlights by first pushing back on the red security tab and then unplugging the light harness from the back of the headlight.



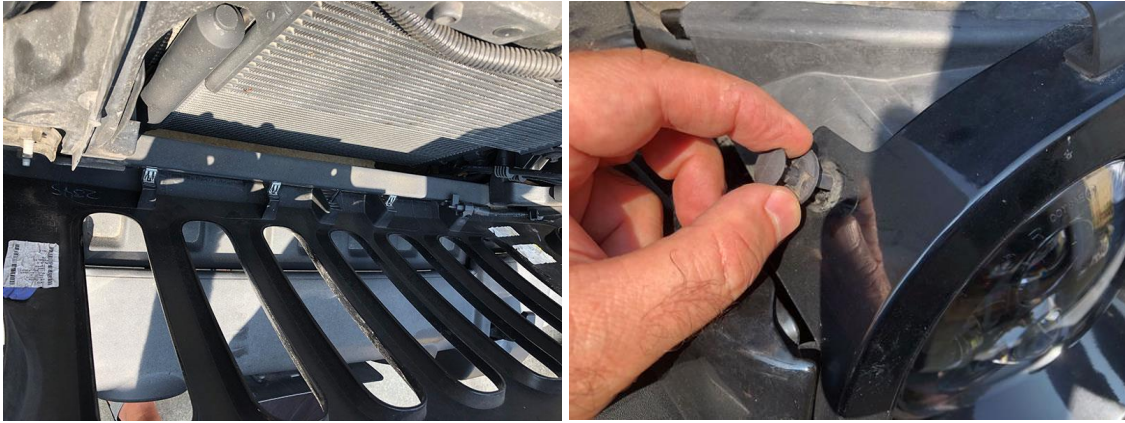
7. Depending on the year of your Jeep you might need the anti-flicker harness. If so, plug the harnesses together. The connection points might seem loose, if so use electrical tape to help protect the connections from water.



8. Next, plug the new LED headlights into the harness and position the lights within the headlight well. Ensure that the position tabs are properly aligned and properly seated. Secure into position using the factory retaining ring and (4) torx screws.



9. Finish the install by reinstalling the factory grille, starting with the bottom metal clips and then the (6) plastic fasteners. Plug the (2) turning signal lights in and close the hood.



Before

After



Installation Instructions Written by ExtremeTerrain Customer Louis Orellana 8/26/18