

Power Stop Z23 Evolution Sport Brake Rotor & Pad Kit - Front (90-98 Wrangler YJ & TJ; 1999 Wrangler TJ w/ 3-1/4 in. Composite Rotors)

Installation Time: 120 Minutes

Tools Required:

- ✓ 12 mm Socket

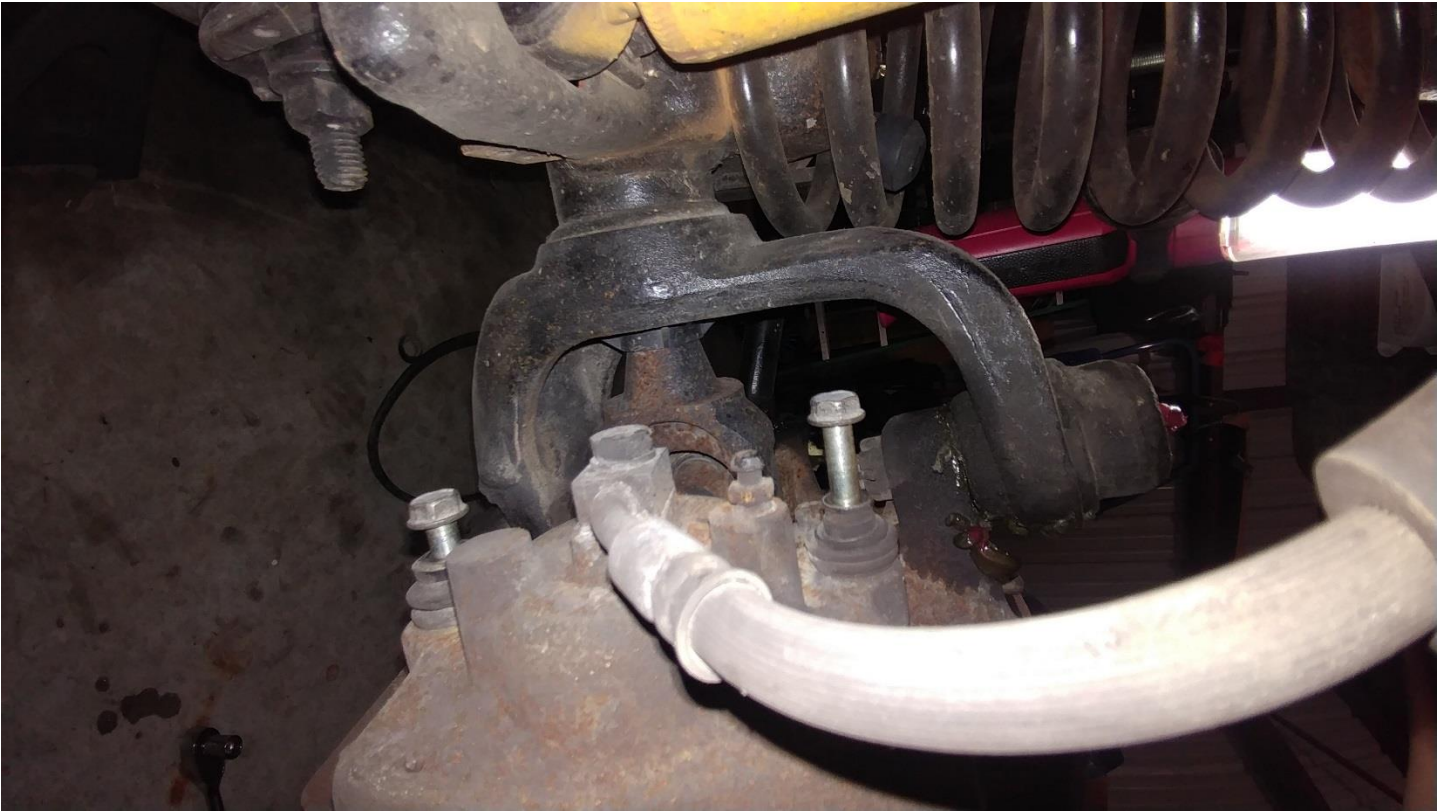
Other products show in this guide. M.O.R.E. Front Stainless-Steel Brake Lines 23 in. Item J112875-A, Power Stop Performance Front Brake Calipers – Red Item J108756

Installation Instructions:

1. Before, after wheel and tire removal



2. To remove the rotor the caliper must be removed first. Remove the 2 – 12mm bolts holding the caliper on.



3. Lift from the bottom of the caliper to remove the caliper from the mounting position



4. Set the caliper in a location where it is not hanging from the brake line.
5. The brake rotor should be free to remove by just pulling away from the Jeep



6. Locate the new Power Stop Z23 Evolution Sport Brake Rotor. They are labeled for passenger and driver sides



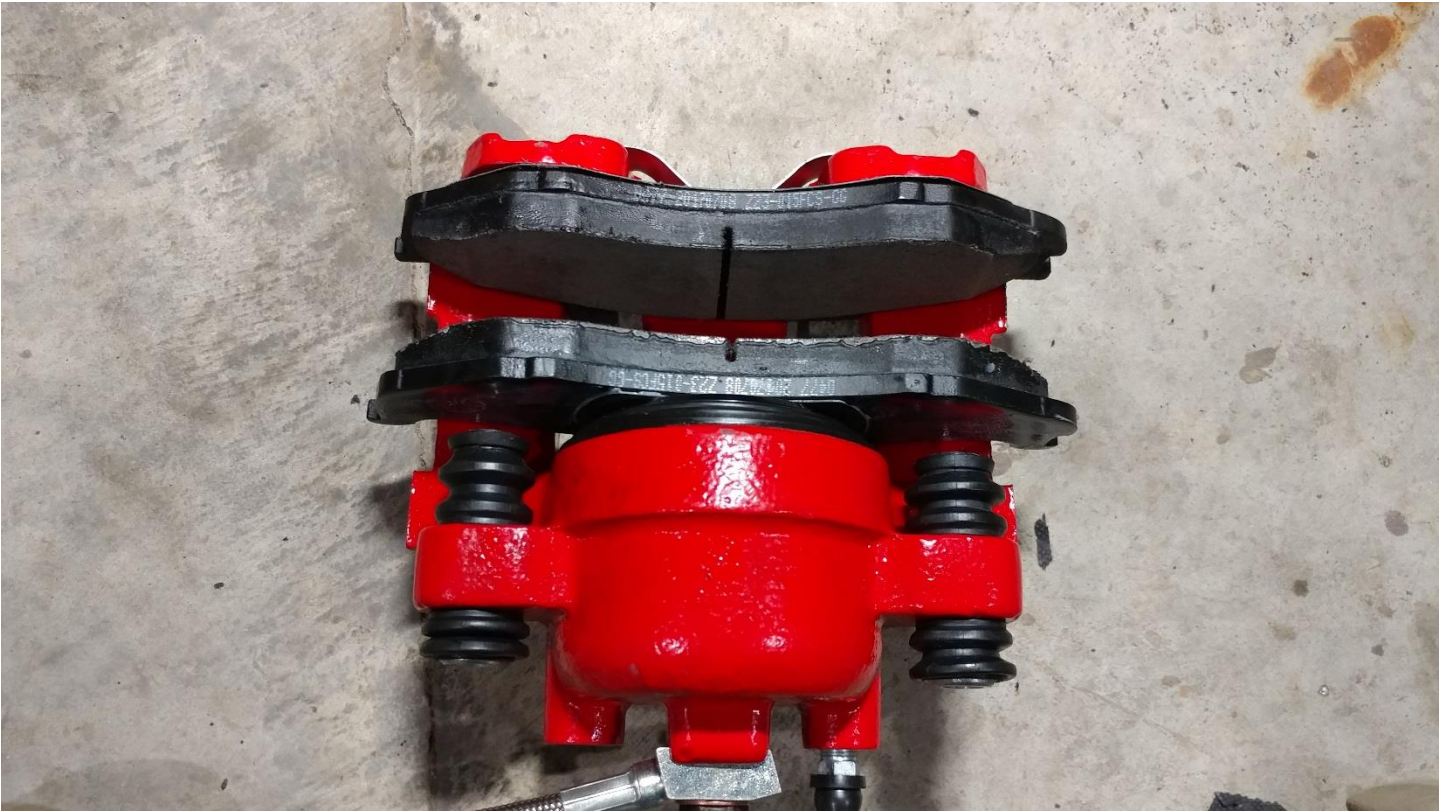
7. Use a lug nut to hold the rotor in place.



8. Locate the proper side brake pads using the old pads for orientation. Then use the provided lube to coat the back side of the pads.



9. Snap the pads in.



10. Starting with the top of the caliper insert the caliper and push down on the lower side.



11. Install the 2 – 12mm bolts



12. Bleed the brakes per the Jeep maintenance manual

MANUAL BLEEDING

(1) Remove reservoir filler caps and fill reservoir with Mopar, or equivalent quality DOT 3 brake fluid.

(2) If calipers, or wheel cylinders were overhauled, open all caliper and wheel cylinder bleed screws. Then close each bleed screw as fluid starts to drip from it. Top off master cylinder reservoir once more before proceeding.

(3) Attach one end of bleed hose to bleed screw and insert opposite end in glass container partially filled with brake fluid (Fig. 14). Be sure end of bleed hose is immersed in fluid.

(4) Open up bleeder, then have a helper press down the brake pedal. Once the pedal is down close the bleeder. Repeat bleeding until fluid stream is clear and free of bubbles. Then move to the next wheel.

13. Installation complete



Installation Instructions Written by ExtremeTerrain Customer T. Boyer 4/4/2018