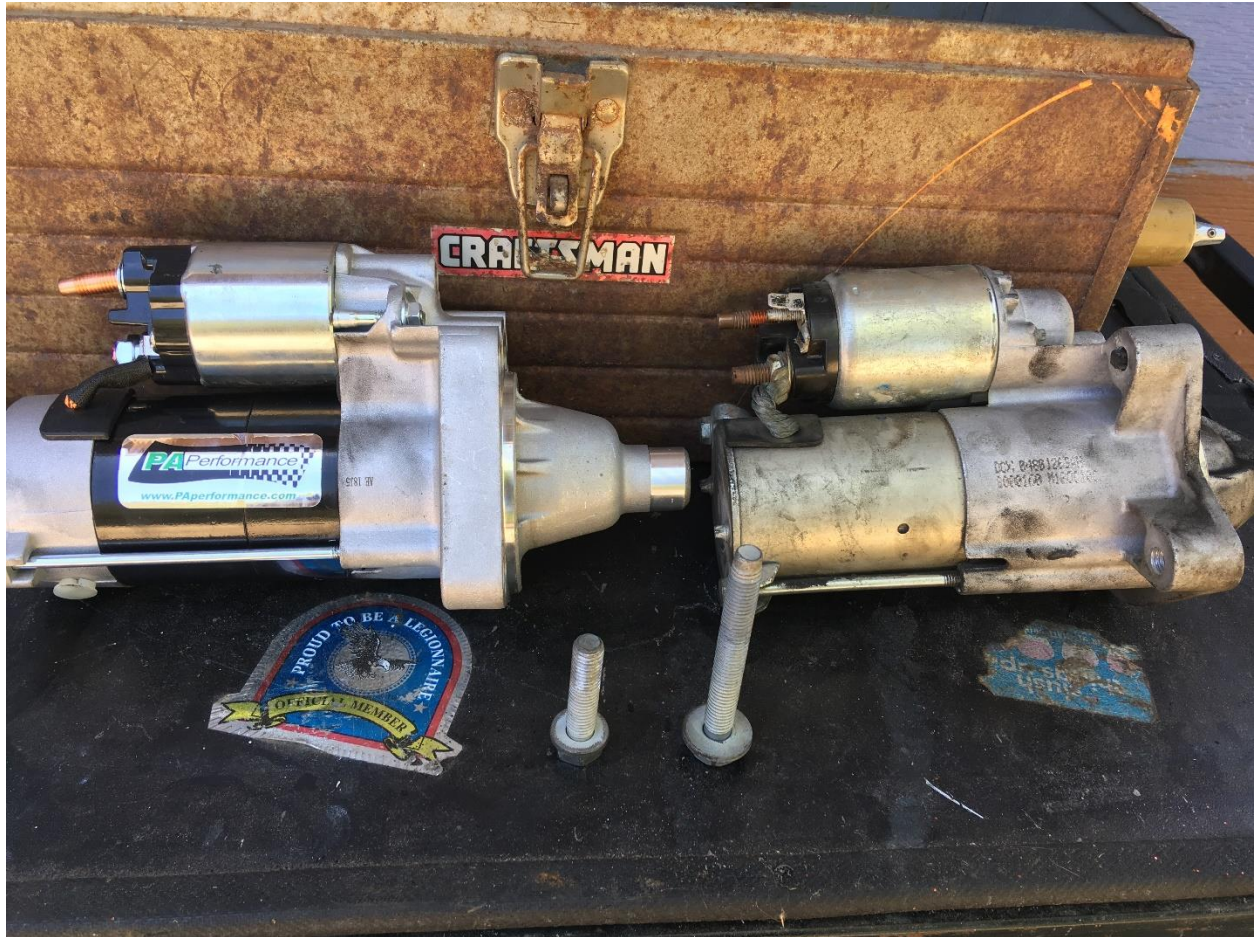


# EXTREME TERRAIN

OFF-ROAD OUTFITTERS

PA Performance starter Replacement



## Installation Instructions for PA Performance Starter (Wrangler 3.8L)

### **Tools Required:**

- 10mm Socket
- 13mm Socket
- 5/8 Socket
- Flathead Screwdriver

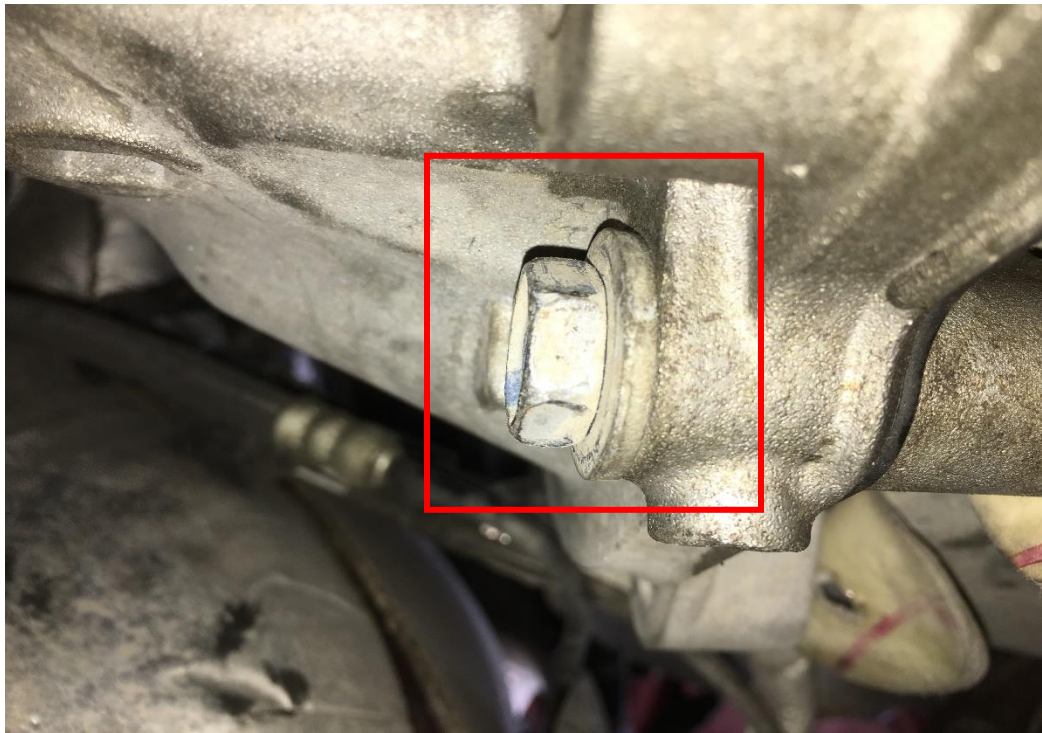
1. Unplug both terminals on the battery using a 10mm socket.
2. Locate the starter. Use a flathead to loosen the retaining ring, that holds the heat shield on. Then slide the heat shield off.



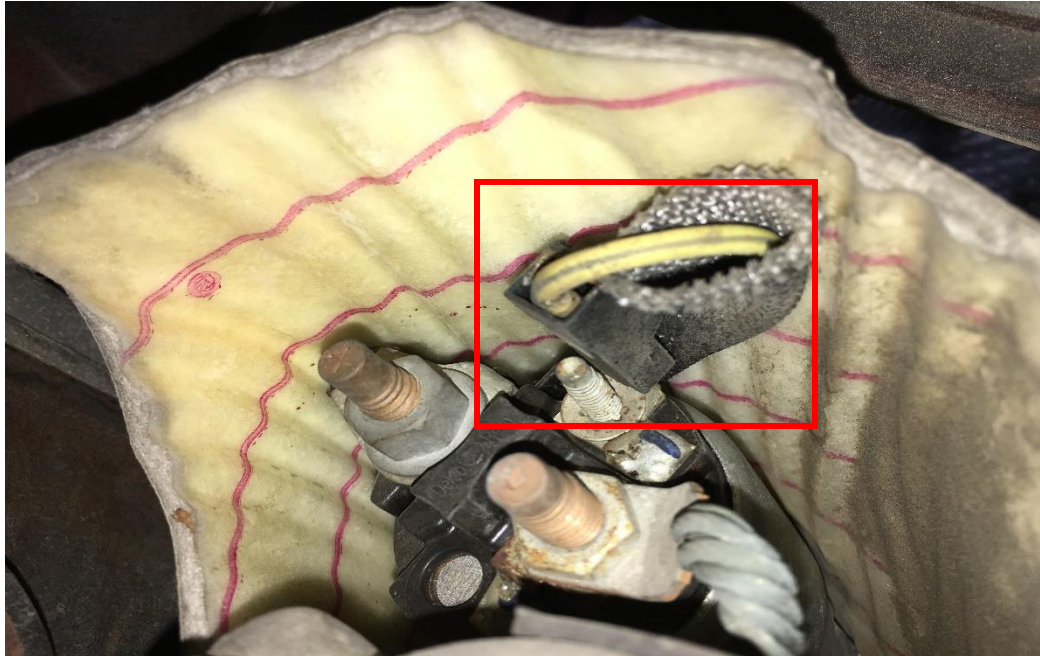
- Using a 5/8 socket loosen the top retainer bolt. (Do not remove)



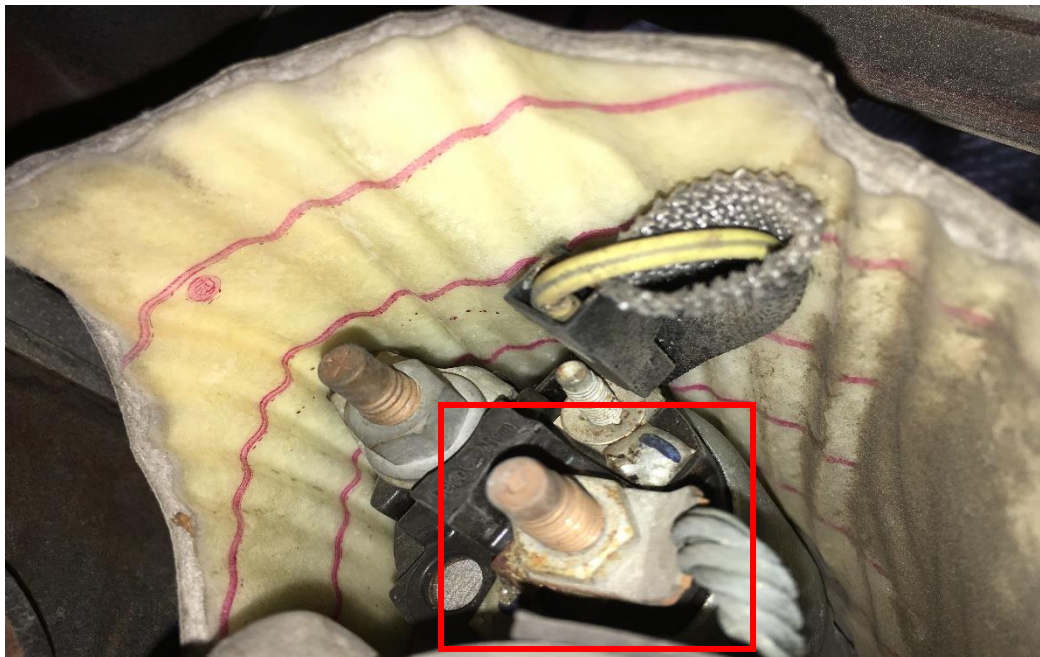
- Using a 5/8 socket loosen the bottom retainer bolt. (Do not remove)



5. Remove the slide on cable front the front of the starter.



6. Using a 13mm socket remove the bolt holding in the power cable. Then slide off the power cable.



7. Now remove the both bolts that are holding the starter in. Carefully take out the starter.



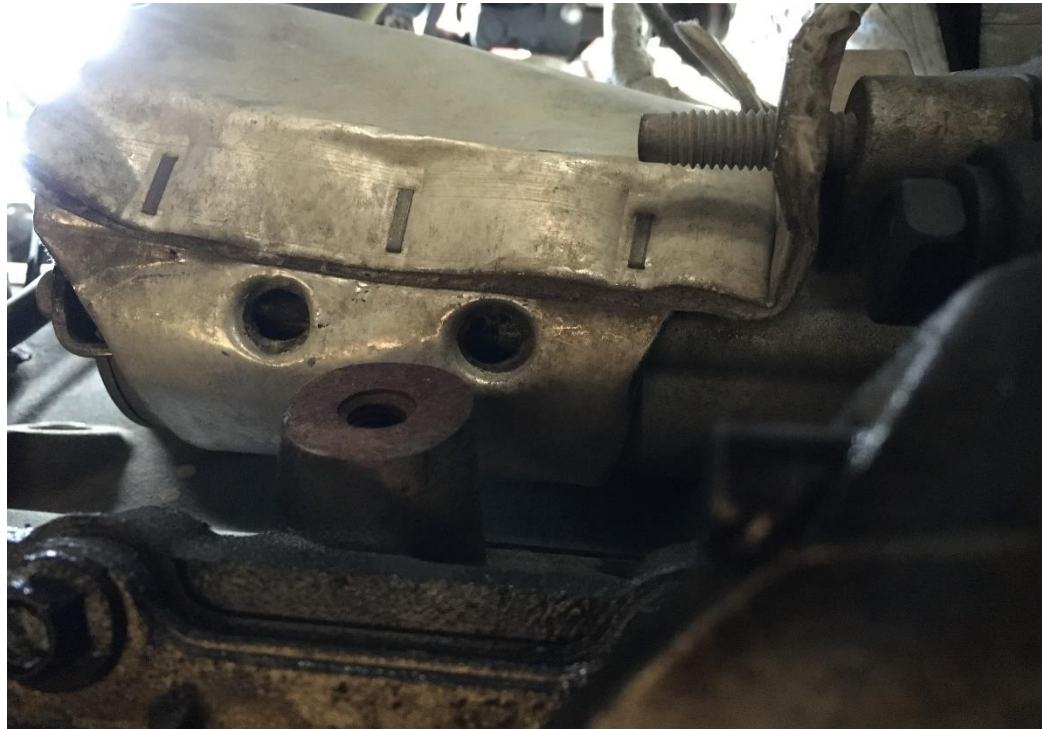
8. Install the new starter. Put the new starter into position and thread the top/bottom bolts. (Check your jeep's manual for torque specs)



- Slide the power cable and nut onto the starter bolt. Use the 13mm to tighten to torque specs. Then just slide on the cable



- Slide the heat guard back on and the retaining ring. Press down the edges to make it flat.



11. Attach both terminals to the battery and tighten down. Now start the Jeep!

Installation Instructions Written by ExtremeTerrain Customer Michael Valverde 09/30/2019