

Omix- ADA Headlight Sealed Beam Retaining Ring (97-06 Jeep TJ)

Installation Time: 30 Minutes

Tools Required:

- ✓ Torx T15 Screwdriver

This retaining ring holds the sealed beam headlight in place. The retaining ring on the 2005 Wrangler Unlimited used in these directions has lost one of the 4 tabs holding it in place so the ring is being replaced. The ring can be used either on the driver or passenger side headlight. It does not come with hardware. You will reuse the original screws. If you plan to replace headlights or bezels this is a good time to do those as well since as the labor is the same.



Headlight before bezel removal. Retaining ring can be seen along the edge of the headlight itself.

Installation Instructions:

1. Unboxing. You will receive 1 retaining ring. Locate the split in the ring. When properly in place the split will be directly at the bottom of the headlight.



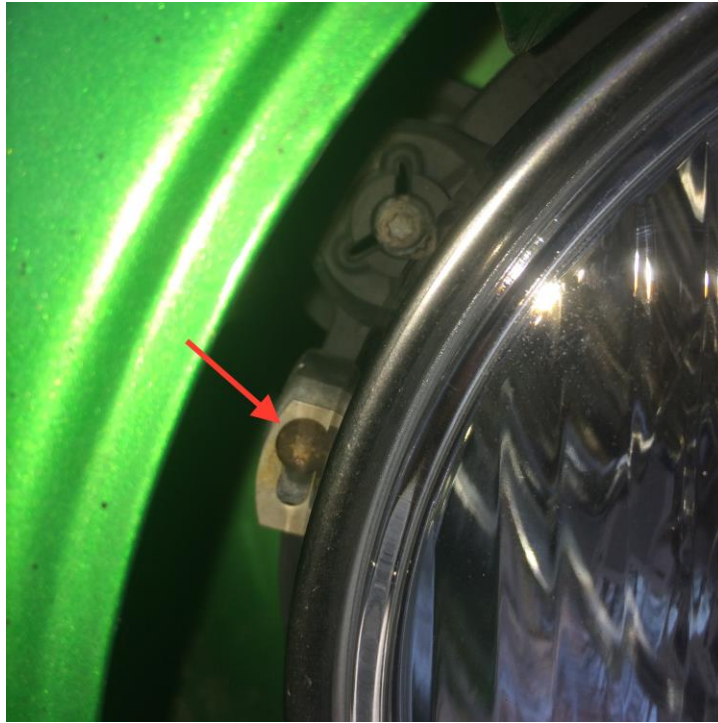
Location of split.

2. Remove the 3 screws holding the headlight bezel in place using the T15 screwdriver. Remove the bezel. You may have to wiggle or turn it to get it to come out if it is stuck. Take care not to break it. Retain the 3 screws.



Location of 3 bezel screws.

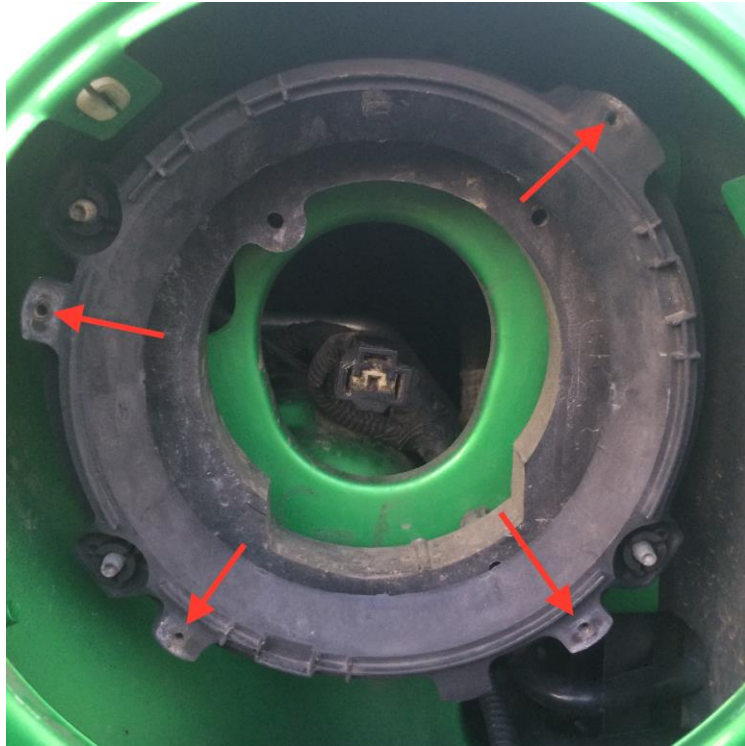
3. With the bezel removed you will be able to locate the 4 retaining ring screws. You will also see the headlight adjustment screws. You will only be removing the 4 screws that go through the tabs on the retaining ring. Once the screws are removed the retaining ring will lift away and the headlight will drop slightly out of place. Retain the screws to reuse with the new ring.



Retaining ring screw through tab marked.



Retaining ring removed.



In this picture the headlight has been removed to show the locations of the retaining ring screw holes.

4. Install the new retaining ring making sure that the split in the ring is at the bottom and the 4 tabs on the ring line up with the screw holes. It will be necessary to hold the headlight in place while starting the first screws.



Ring and screws replaced.

5. Replace bezel and the 3 screws. Make sure not to over tighten screws. Your headlight is now held securely in place.



Installation Instructions Written by ExtremeTerrain Customer Jason Horn 11/30/2017