

## Olympic 4x4 Safari Mirrors for Jeep CJ and Wrangler Models

**Installation Time:** 30 Minutes

**Tools Required:**

- ✓ 13 mm wrench
- ✓ 9/16 inch wrench

*Olympic safari mirrors can be installed on safari doors or on the upper door-mounting bracket directly on the Jeep. This installation was completed in a 2005 Jeep Wrangler Unlimited and the mounting location is the upper bracket. If mounting directly to safari doors, in step 4 of installation, insert the threaded shaft of mirror through the mirror-mounting bracket on the safari door instead of the door-mounting bracket.*



*Before installation both doors will need to be removed if they have not been already. Removal varies slightly by model. On this 2005 model the doors are removed by removing the two 13 mm nuts on the bottom of the door hinges. Once the nuts are removed the doors can be lifted off. Take care in removing doors as they are heavy. If installing safari doors consult the directions and install doors before installing mirrors.*

### Installation Instructions:

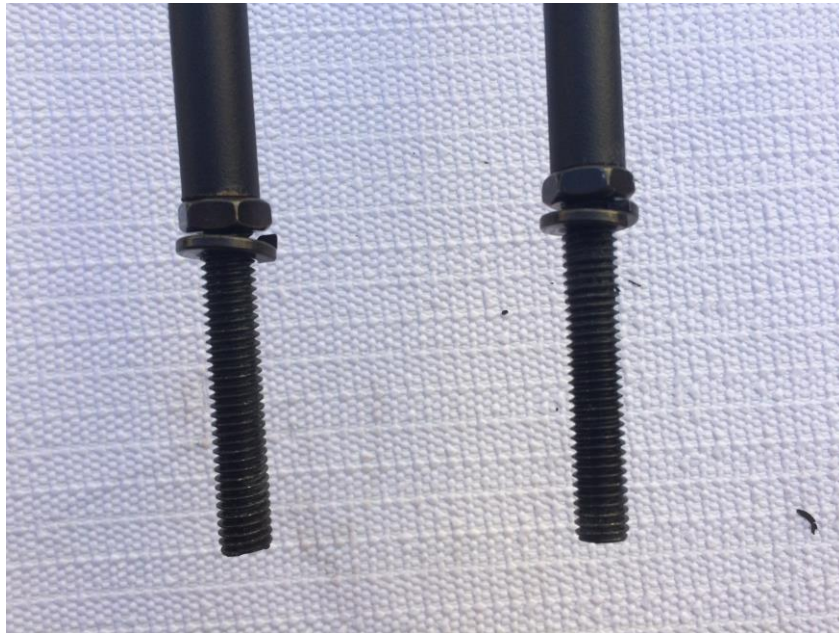
1. Unbox mirrors. Ensure you have the following parts.
  - 2 safari mirrors
  - 2 mounting arms
  - 4 lock washers
  - 2 jam nuts (short)
  - 2 nuts (thicker)



2. Attach the mounting arms to mirrors. Remove the bolt on back of mirror using the 13 mm wrench. Insert the bolt through the hole in the mounting arm and back into the hole in the back of the mirror. Tighten securely. Repeat on other mirror making sure to reverse direction of the second mirror so when installed both mirrors will face to the rear of the Jeep.



3. Install 1 jam nut (short) and 1 lock washer on the threaded rod of the mirror arm. Tighten with the 9/16-inch wrench.



4. Slide the threaded rod of the mirror arm into the upper door-mounting bracket or mirror-mounting bracket on safari door.



5. Install lock washer and nut onto threaded end of rod from bottom and tighten with the 9/16-inch wrench.



6. Repeat on the other side of the Jeep.

7. Adjust mirrors and enjoy!

