

# M.O.R.E. Oil Pan & Transmission Skid Plate

(97-06 Wrangler TJ)

## Installation Guide

**Installation Time:** 60 Minutes

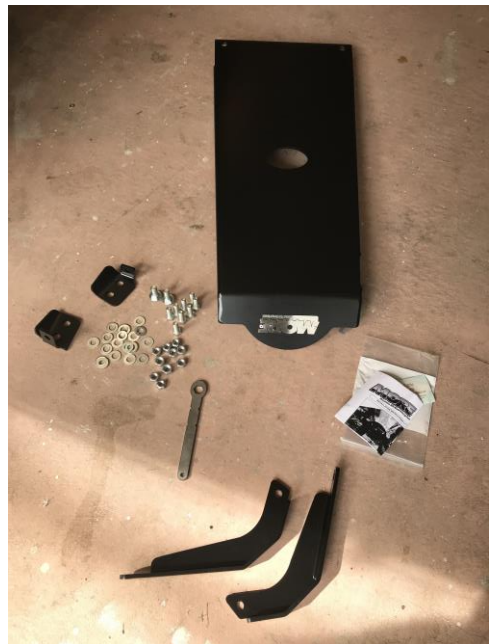
**Tools Required:**

- 11/16 socket
- 3/4 socket
- 1/2 drill bit
- 1/16 wrench
- Kit comes with a bendable wrench



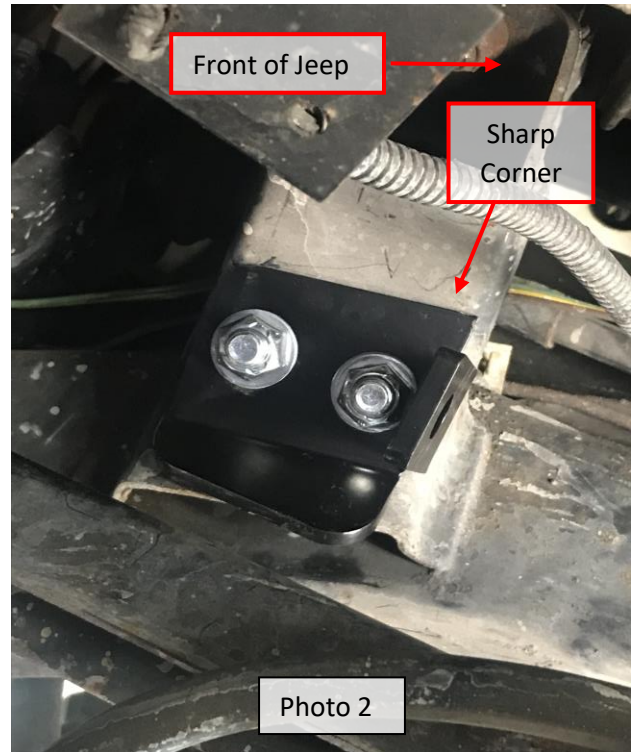
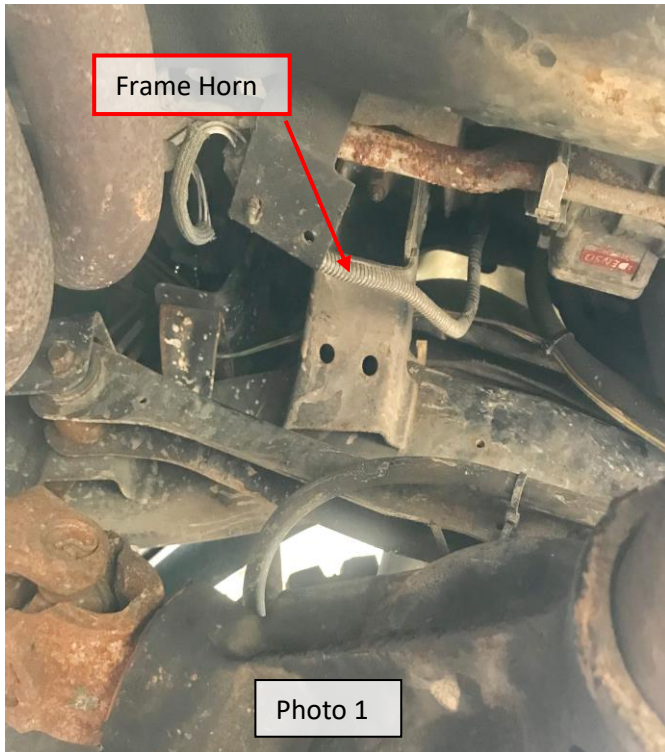
**M.O.R.E. TJOPSP Oil Pan/Tranny Skid Plate Includes:**

- Oil Pan/Tranny Skid Plate
- 2-J Brackets
- 2-Angle Brackets (DS and PS)
- 8-7/16" x 1-1/4 Bolts
- 8-7/16" Lock Nuts
- 2-1/2 x 1-1/4 Carriage Bolts
- 2-1/2" Nuts
- 2-1/2" Flat Washers
- 16-7/16" Flat Washers
- Bendable Wrench



## **Installation Instructions:**

1. **Angle Brackets:** The kit includes 2 angle brackets, the DS and PS angle bracket. The DS angle bracket consists of a sharp angular corner at the top (Photo 2) and is to be mounted on the driver's side of the jeep. Mount the DS and PS angle brackets to the frame horns (Photo 1) of the motor mount using the 7/16" x 1-1/4" bolts, flat washers (on both the inside and outside of the frame horn) and nuts. The angle brackets contain a slightly bent tab on the bottom and a 90-degree bent tab which will be bolted to the J bracket in Step 2. Bend the supplied wrench as needed to fit inside the frame horns and tighten bolts.



2. **J Brackets:** Set the J brackets next to each other on a hard surface. One of the brackets is longer. The longer bracket will be used on the driver's side. The flat face of the J brackets will face the front of the jeep. Attach the J bracket to the angle brackets you just mounted in Step 1 using 7/16" x 1-1/4" bolts, flat washers (on both sides of the bolt), and nuts. Leave the bolts loose at this time. See Photo 3.

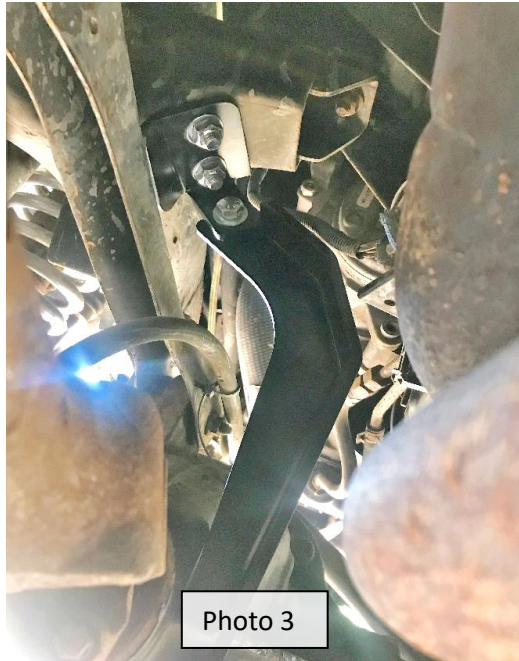


Photo 3

3. Skid Plate: Attach the  $\frac{1}{2}$ " x 1-1/4" carriage bolt from the inside of the TJOPSP (Photo 4) and through the J bracket (Photo 5). Attach the flat washer and nut. Leave loose at this time.



Photo 4

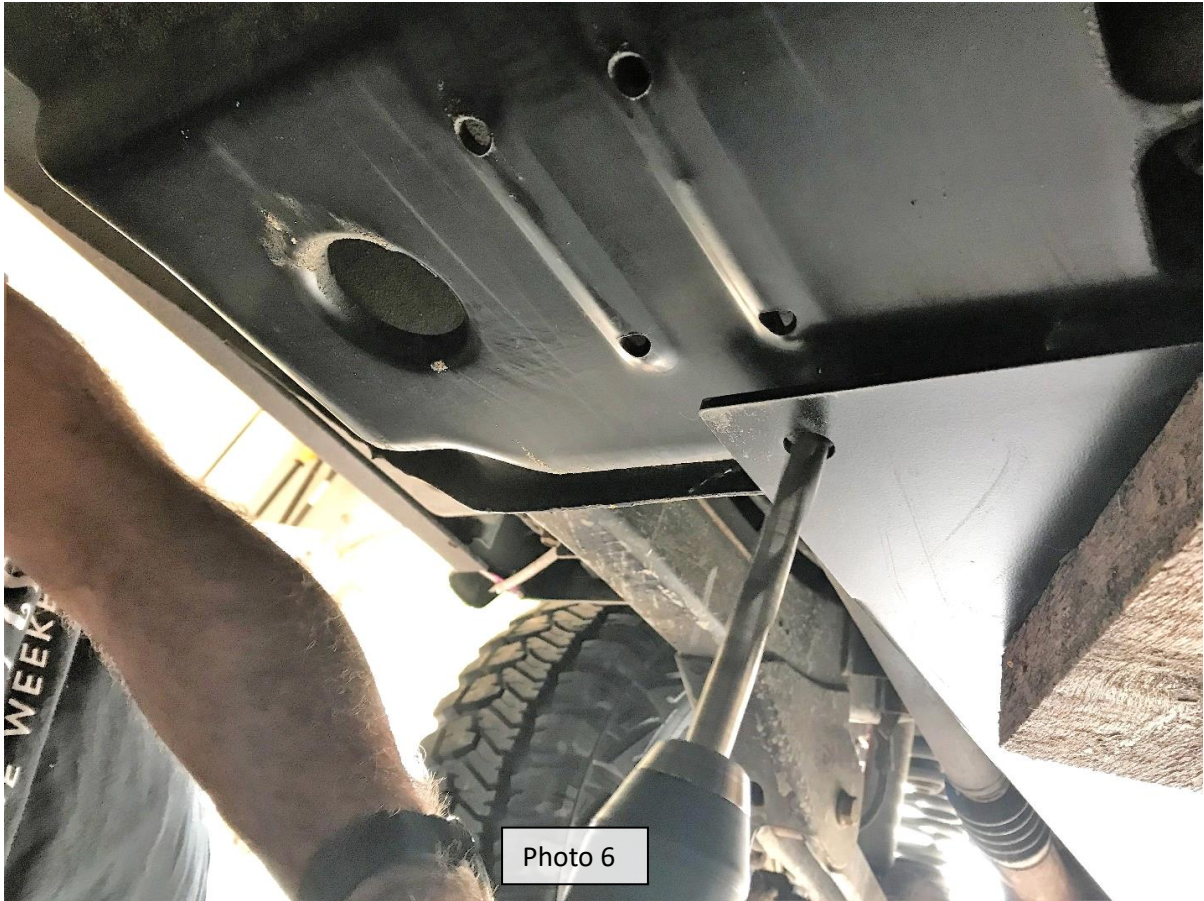


Photo 5

4. Align the skid plate so the large pre-cut hole is centered around the oil drain plug.



5. Using a  $\frac{1}{2}$ " drill bit, drill a hole through the factory skid plate and install a  $\frac{7}{16}$ " x 1-1/4" bolt and nut with a washer on the top and bottom of both drilled holes. Leave bolts loose at this time.



6. Making sure the TJOPSP is centered and you have clearance around the exhaust and driveline, tighten up all the nuts and bolts.



Installation Instructions Written by Extreme Terrain Customer Jessica Colvard 03/04/2018