

## M.O.R.E. front trac bar installation on 94 YJ Jeep Wrangler

**Installation Time:** 60 Minutes

**Tools Required:**

- ✓ 3/4" socket or box wrenches (2)
- ✓ Drill with 1/2" bit
- ✓ Adjustable wrench
- ✓ 7/8" open end wrench

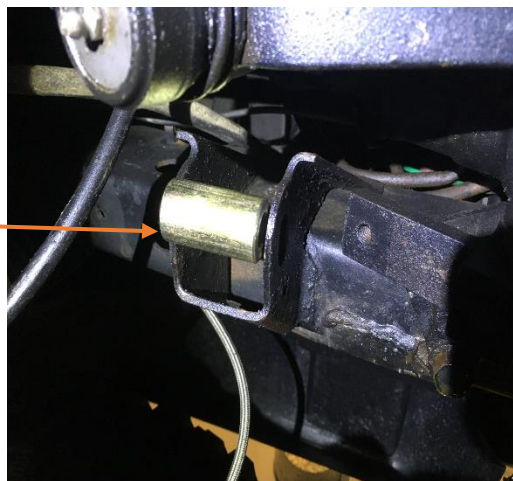
*Pre-installation: 1. Remove existing OEM front trac bar from frame bracket and axle mount point*



**Installation Instructions:**

1. Install spacer in frame bracket simply to keep bracket from collapsing since new trac bar will mount to rear of bracket and NOT inside bracket where OEM trac bar was mounted

1" diameter spacer



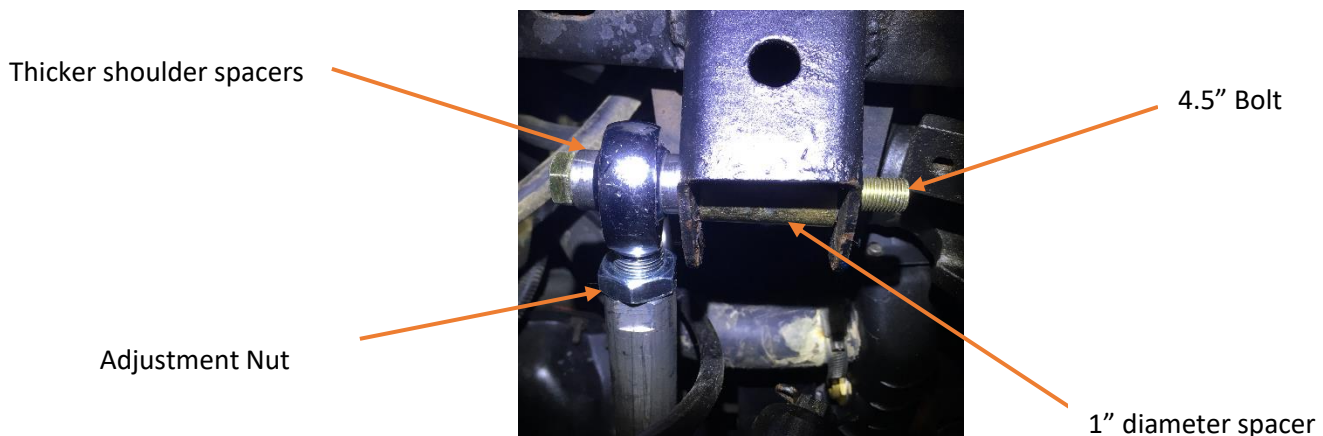
2. Use 1/2" drill bit to bore out existing mounting hole on axle which is metric sized from the factory



3. Press or carefully tap the bushings (shoulder spacers) into new trac bar heim joints. Use both thicker ones on one end and both thinner ones on the other end of trac bar heim joint holes.



4. Adjust length of trac bar and tighten adjustment nuts with 7/8" wrench. Use longest bolt to mount the end of new trac bar with thicker bushings (shoulder spacers) on to back of frame mounting bracket.



5. Use shorter 1/2" bolt to mount other end of new trac bar onto axle where you drilled 1/2" hole

3" Bolt



M.O.R.E. Trac Bar Installed



Installation Instructions Written by Extreme Terrain Customer Wayne Nock 11/04/2018