

## Mopar Side Step Bars (18-19 Jeep Wrangler JL 4 Door – J120461)

**Installation Time:** 30 Minutes

**Tools Required:**

- ✓ 10mm Socket
- ✓ 13mm Socket
- ✓ 3" socket extension



*A second person may be helpful to hold the running board in place during step (3) but is not necessary*

**Installation Instructions:**

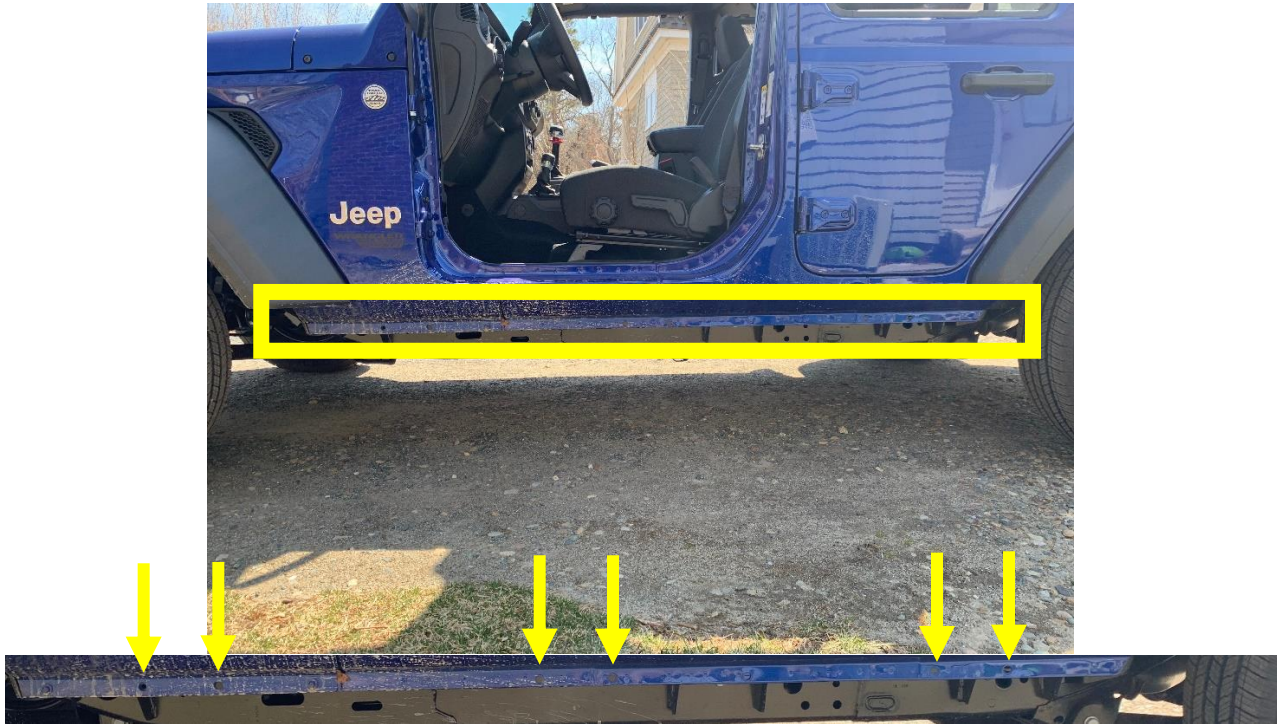
1. Identify the driver side running board labeled "LH."



2. Locate (3) 13mm bolts and (6) 10mm flange nuts for driver side installation.



3. Line up the (6) driver side holes with the (6) attached bolts on the running board. Finger tighten (6) flange nuts.



4. Locate the (3) threaded inserts on the bottom of your jeep and finger tighten (3) 13mm bolts.



5. Now that your running board is held up by the hardware, tighten the (6) 10mm flange nuts and the (3) 13mm bolts. Please note, a 3" extension makes tightening the 13mm bolts easier.



6. Repeat for passenger side. The passenger side running board is labeled "RH."



**Before and After:**



Installation Instructions Written by ExtremeTerrain Customer John P. McGinley 03/31/2019