

Mishimoto Performance Fan Shroud Kit (87-06 4.0L Wrangler YJ & TJ)

Installation Time: 60 Minutes

Tools Required:

- ✓ Pliers
- ✓ 8mm socket
- ✓ 1/2" open end wrench or gear wrench

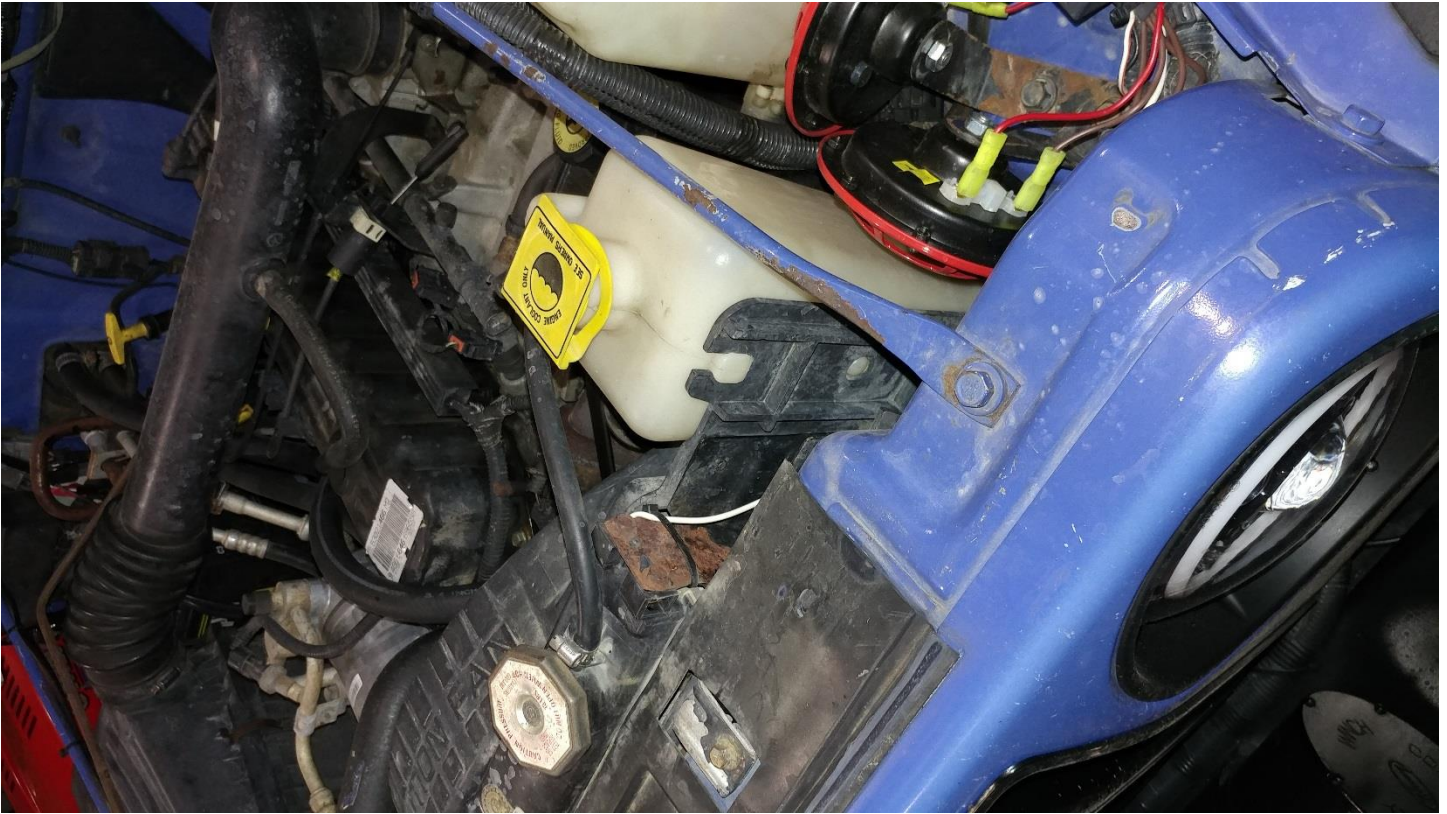
My factory fan shroud was altered by the previous owner, due to a body lift. Which caused the fan to no longer be centered with the radiator or surrounded by the fan shroud. When running the AC the Jeep would run hot.

Installation Instructions:

1. Before.



2. Remove the radiator overflow bottle. By pulling up from the bottom of the bottle.



3. Disconnect the overflow line from the bottle using a pair of pliers.



4. After removing the overflow bottle locate the 4 - 8mm bolts holding the fan shroud in place.



5. Remove the 4 – ½” nuts holding the fan on the water pump pulley.



6. Carefully pull the shroud and fan from the Jeep. DO NOT HIT THE RADIATOR CORE.



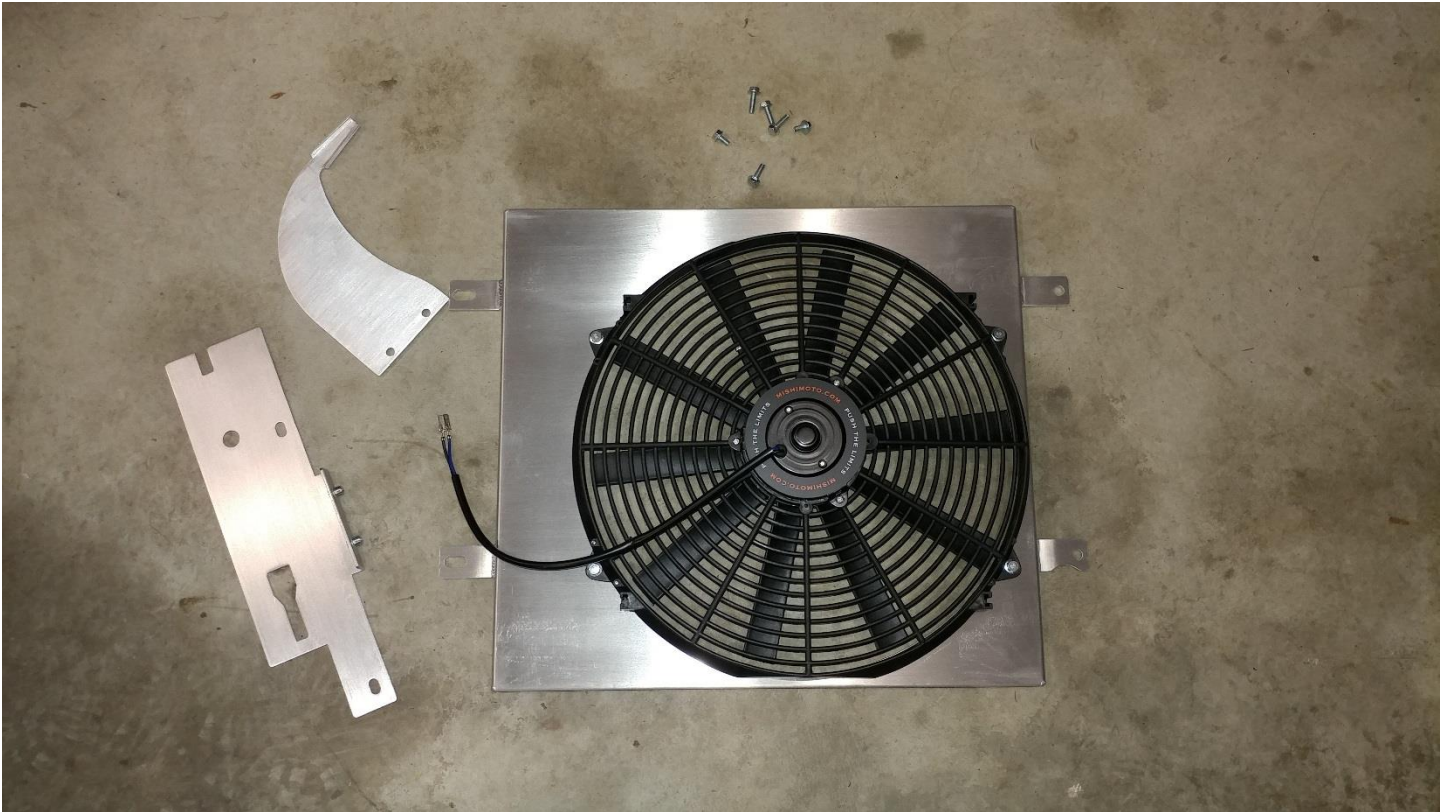
7. Reinstall the 4 – ½” nuts. This holds the water pump pulley in place.



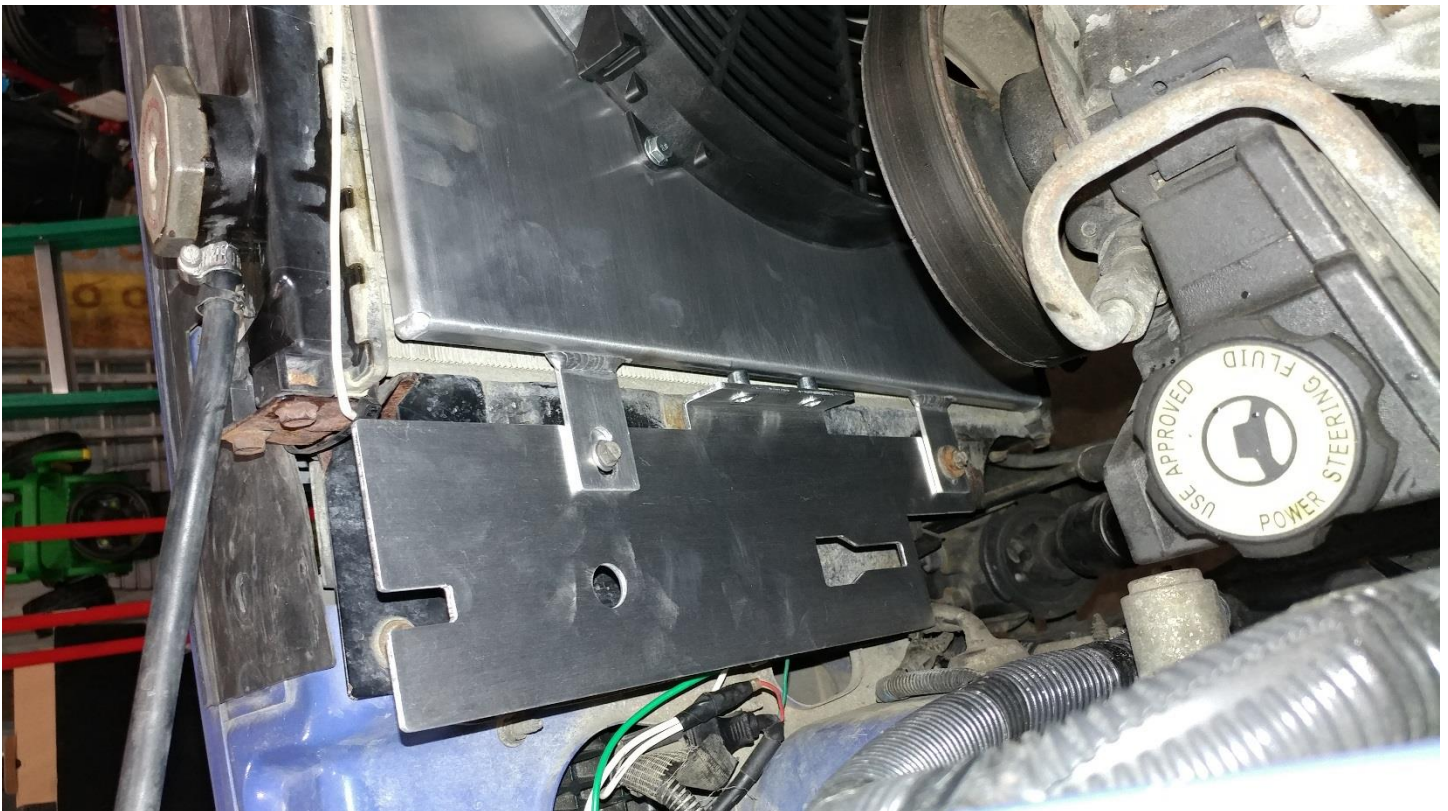
8. Everything removed. Notice the fan shroud that was altered by the previous owner.



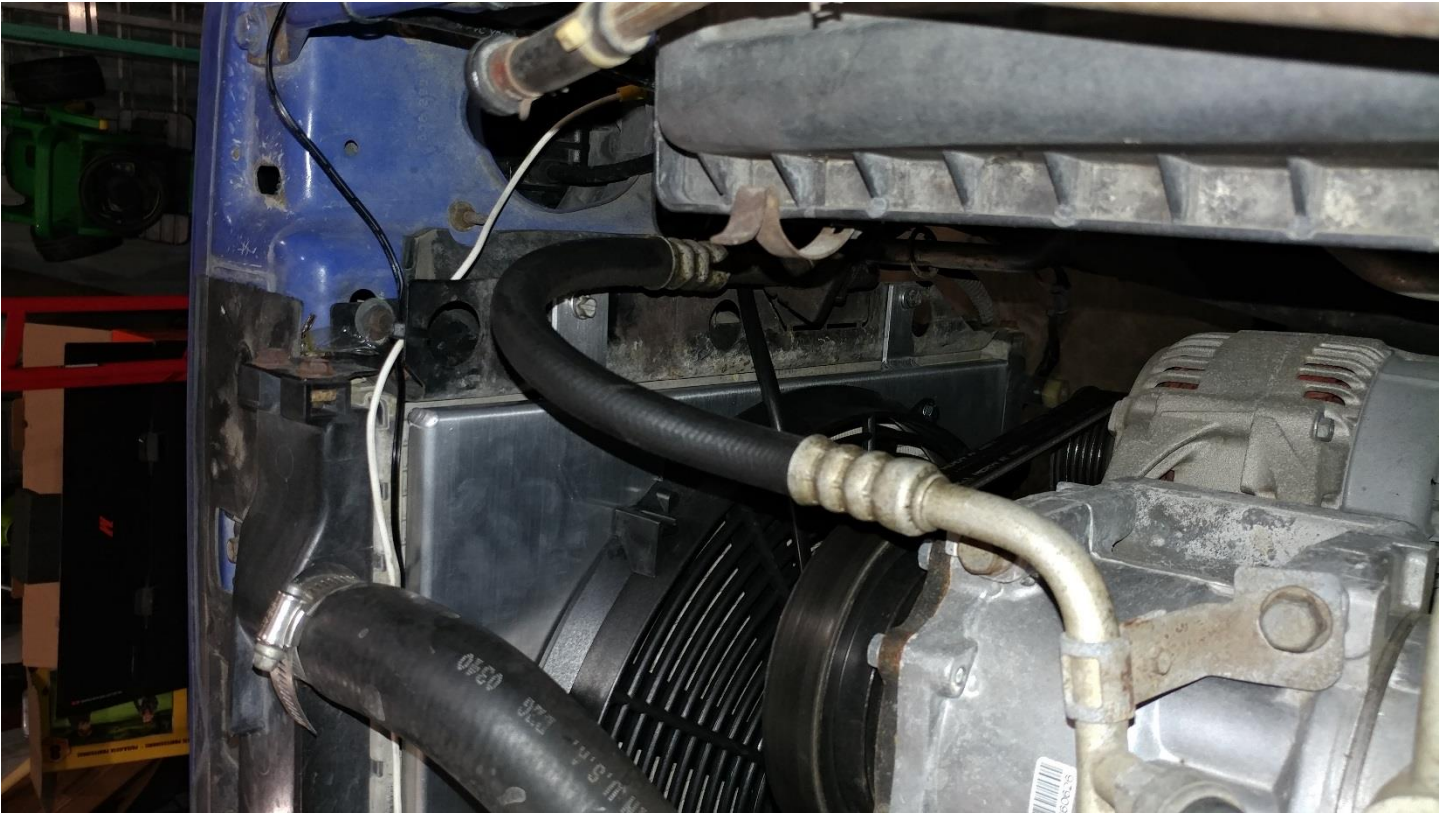
9. What comes with the Mishimoto Performance Fan Shroud Kit.



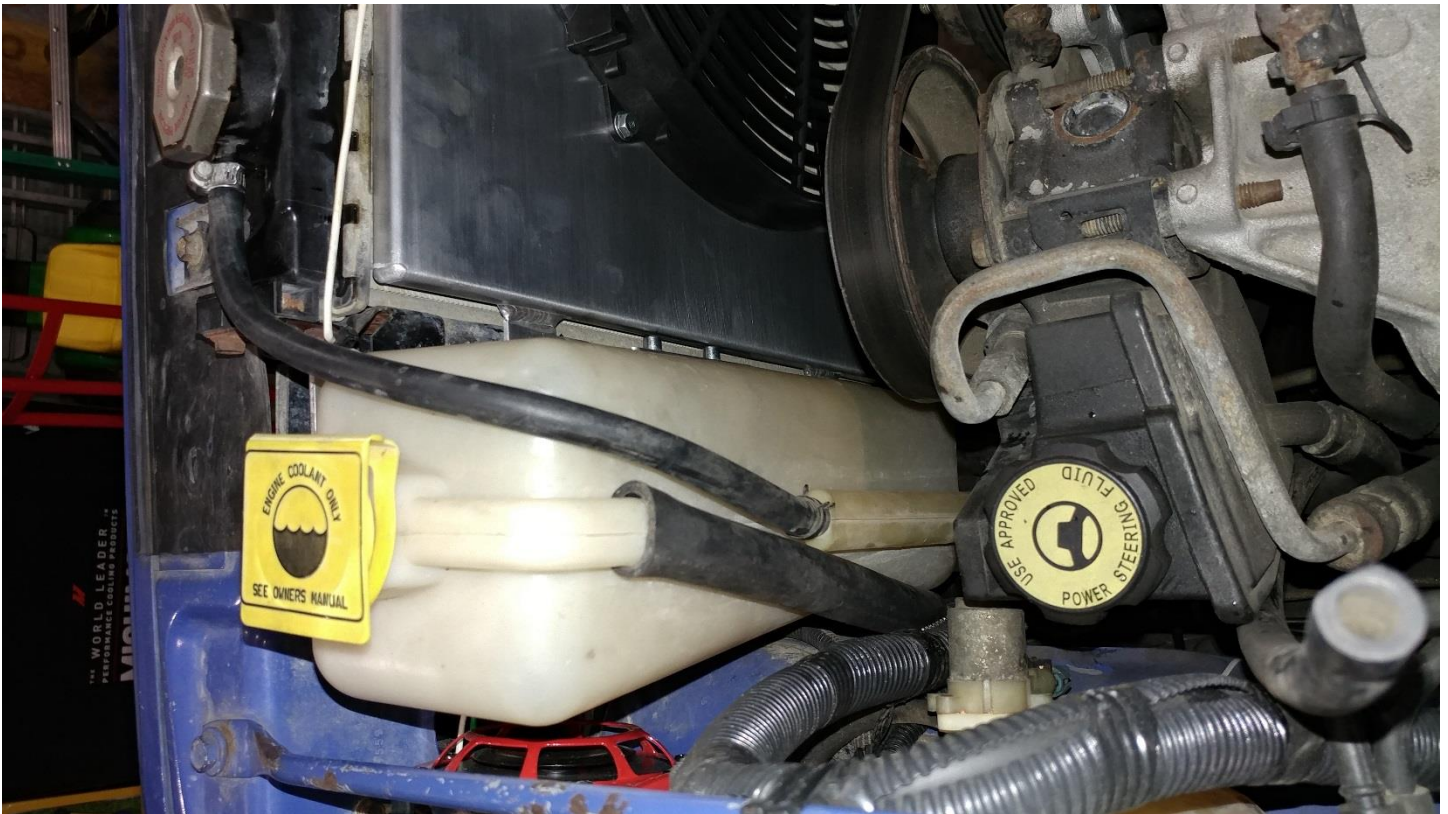
10. Install the fan shroud and overflow bottle bracket. The Mishimoto Performance Fan Shroud Kit did come with hardware but it did not work with my application. Reinstall the factory 8mm bolts.



11. Reinstall the factory 8mm bolts on the passenger side.



12. Reinstall the factory overflow bottle and connect the overflow line.



13. Installation complete.



14. For wiring the Mishimoto MMFAN-CNTL-UPROBE Black Adjustable Fan Controller Kit is recommended

