

MCE Front Fender Installation Guide

Installation Time: 2 ½ hours

Tools Required:

- ✓ 10mm socket
- ✓ 3" socket wrench extension
- ✓ Ratchet wrench
- ✓ Needle nose pliers
- ✓ Power Drill
- ✓ 5/16" driver for drill
- ✓ 5/16" socket
- ✓ 5/32" allen wrench
- ✓ 7/16" end wrench
- ✓ Flat head screw driver (may not be needed, but good to have just in case)

Materials Required:

- ✓ RTV Silicone
- ✓ Wire cutters
- ✓ Wire stripper
- ✓ Electrical butt connectors
- ✓ Electrical tape
- ✓ [2] Small to medium zip ties
- ✓ [3] clamps (only needed if you are doing the install yourself and don't have someone to help you)

When you unpack the box, you should have the following:

1. [2] Front end fenders
2. [2] LED yellow marker lights
3. [2] Fender mounting pads
4. [1] Packet of hardware

Installation Instructions:



Installing the MCE Front Fenders:

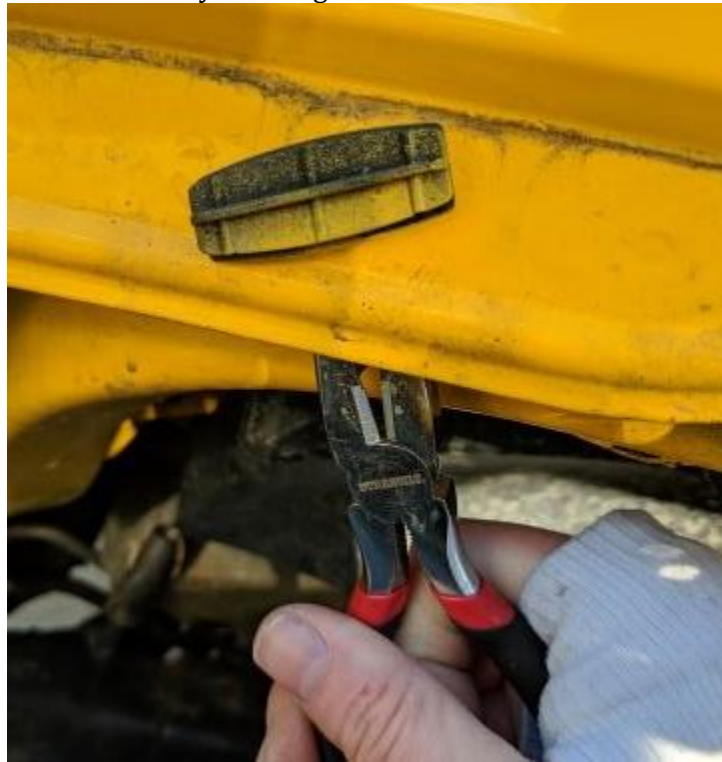
1. Unplug the corner marker lights from the existing fenders. Reach up into the fender and grab the back of the marker light socket, twist it $\frac{1}{2}$ of a turn and pull it out. Then cut the plastic zip tie/clip that is holding the wiring loom onto the fender. ****be very careful when cutting the zip tie/clip not to damage the wires or the wiring harness****



2. Using the 10mm socket on the ratchet, loosen and remove the 6 bolts holding the fender onto the Jeep. There is one socket that is hidden (yellow arrow in photo below), you will need to use the 3" socket wrench extension to reach that bolt.



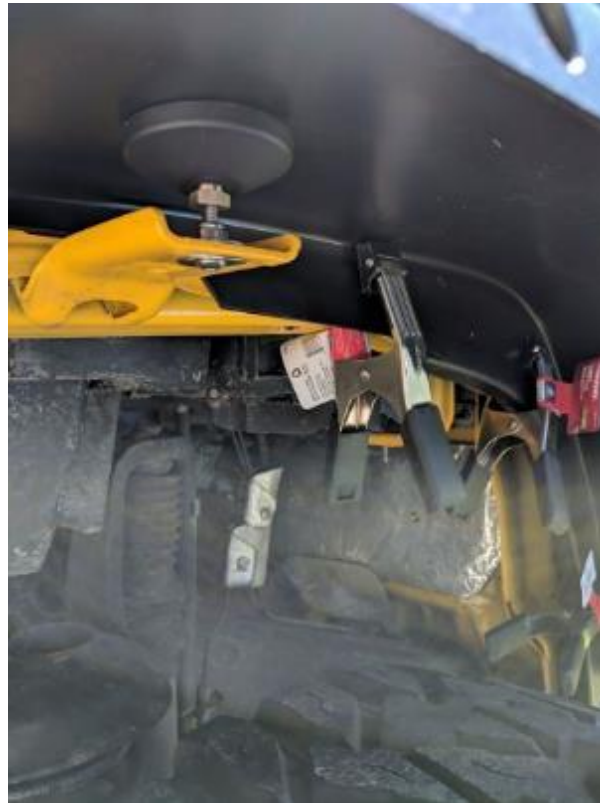
3. After you remove the bolts, the fender is still held on with several plastic clips. In order to remove the fender from the clips, grab the bottom of the fender on either side and pull up and out at the same time. It may take several tries and at first it will feel like it's not going to budge, but keep at it and it will pop off of the clips little by little.
4. Sometimes the entire plastic clip will pop off with the fender, other times they will stay on the body of the Jeep. For any that remain on the body of the Jeep, use needle nose pliers to pinch the back of the clip and twist and push until the clip pops out. For me, this was the hardest part of the install as a few of the clips just didn't want to budge, but I was eventually able to get all of them off.



5. Congrats, you have now removed the fenders. Clean the area that is now exposed from where the fenders used to be.
6. Next, install the fender mounting pad. Put a large washer on a 1" button head bolt through the bottom of the fender brace that is welded on the Jeep body. Use another large washer and one of the locking lug nuts to secure the bolt in place and tighten it using the 5/32" allen wrench and the 7/16" end wrench. Once the bolt is tight, screw the fender mounting pad onto the bolt.



7. With the help of another person or clamps, hold the fender in its proper place to fit in the stamped body panel. You will notice the first two holes are the only two that line up with the factory holes on the Jeep.



8. Once the fender is lined up, put [2] 1" button head bolts with the larger washers through the front two holes that line up. Use the smaller washers on the back of the bolts with the locking nuts. Use the 5/32" allen wrench and the 7/16" end wrench to secure the two bolts in place.



9. To fully secure the fender, use the drill with the 5/16" driver to install the self-threading screws. Before drilling in each screw, coat it with a dab of RTV to help prevent rust. Do not tighten the screws initially.





10. Once the fender is in place properly, tighten all fasteners

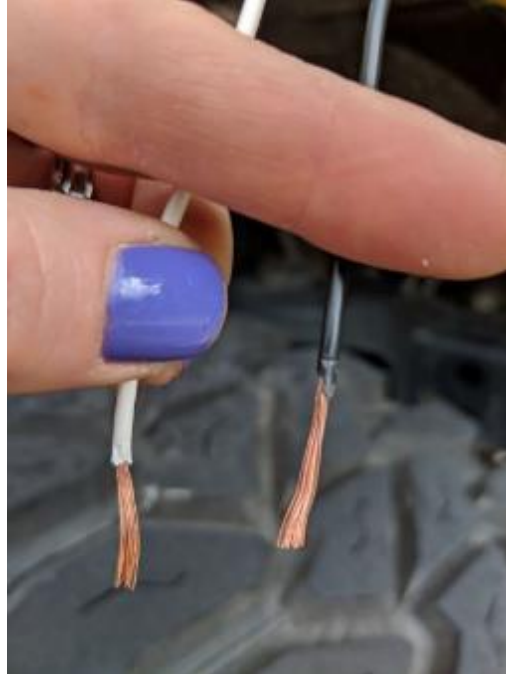
11. MAKE SURE THE JEEP IS OFF AND NONE OF THE ELCTRICONICS ARE RUNNING.
Using the wire cutters, cut the current corner marker light off close to the light itself



12. Using the wire stripper, strip about 1" off both the black and white wires from the Jeep and from the new corner marker lights.

**Note: in my Jeep, the black is the positive and the white is the ground.

**Note: on the new corner marker lights, the black is the ground and the white is the positive



13. Push the new corner marker light through the pre drilled hole on the fender, you may have to use a flat head screw driver to gently guide it through the hole



14. Using the electrical butt connectors, connect the wires as follows:
Connect the BLACK Jeep wire with the WHITE corner light wire.
Connect the WHITE Jeep wire with the BLACK corner light wire.



15. Turn on the Jeep and test to make sure the lights are working properly. If they are, use the electrical tape to secure everything in place and use a zip tie to secure the wiring harness safely under the fender.
16. Follow steps 1 through 15 on the other side to install the other fender.
17. Once both fenders are installed, stand in front of the Jeep to make sure they are symmetrical. If they are not, you can press on the top of the fender where the fender pad is to ensure they are lined up correctly.

Enjoy your new MCE Front Fenders!

