

# Magnaflow Competition Series Cat-Back Exhaust Installation Guide

**Installation Time:** 2 hours

## **Tools Required**



- ✓ 3/8" Swivel Ratchet
- ✓ 15mm deep socket
- ✓ Large pliers
- ✓ Torque wrench
- ✓ Flat head screwdriver

**Pre-installation notes:** Depending on the mileage of your Jeep, the factory clamp bolts might be heavily rusted. It's a good idea to pre-soak them with PB-blander or WD-40 the day before.

## **Installation Instructions:**

1. Start by spraying the bolts and rubber hangers with WD-40.



2. Support the muffler with a Jack to prevent it from falling quickly or putting tension on the exhaust during loosening.



3. Starting with the muffler, remove the two hooks attached to the rubber hanger. You can use the large wrench and flat head screwdriver to pry the hooks free.



4. Loosen the two clamp bolts, along the front and muffler. Using the 15mm socket and angle ratchet, you will be able to easily reach the front bolt. Once all the bolts and hangers have been loosened, the muffler can be removed, followed by the rest of the exhaust. If you have a four door, you might need to temporarily loosen the bolts supporting the EVAP skid plate.



5. The new system can now be installed, starting with the front pipe, slide the pipe over the cat along with a pipe clamp. Note to properly position the pipe within the alignment tab.



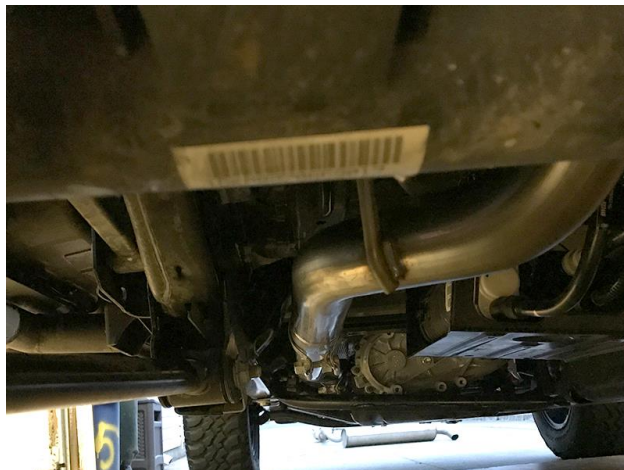
6. Next, route the mid pipe, along with the center clamp. Push the pipes together until the sleeves are fully engaged. Each time slipping the hooks onto the rubber hangers.



7. Position the muffler and pipe clamp over the mid pipe, followed by attaching both hooks on the rubber hangers.



8. Begin to align all the piping to ensure adequate clearance. There should be at least half-inch of clearance surrounding all possible contact points.



9. Once all the contact points have been adjusted begin tightening the (3) clamps with the 15mm socket and ratchet, starting with the front and gradually working through all three clamps, until fully tightened to 40-ft/lbs of torque and completing the install.



Before

After



Installation Instructions Written by ExtremeTerrain Customer Louis Orellana 2/25/17