

Lange Hoist-A-Cart

Installation Guide for Jeep Wrangler '07-'16 2-Door JK

Installation Time: 3 Hour

Tools Required:

- ✓ Box Cutter/Knife
- ✓ Pliers
- ✓ 7mm Socket
- ✓ 14mm Socket
- ✓ 19mm Socket
- ✓ Socket Wrench
- ✓ Philips Head Screwdriver

Installation Instructions:

Note: Each item is labeled (HAC-xxx) and should be installed accordingly.

1. Carefully open the package using a box cutter or knife (Figure A). Then use pliers (Figure B) to open the packaging to ensure all parts and hardware are included and undamaged.



Figure A



Figure B

2. Place cross beams HAC-005 down then place HAC-003, HAC-004 and HAC-029 over. Sit HAC-008 over the HAC-003 & HAC-004 layer using HAC-024 bolts and HAC-015 nuts (Figure C). Hand tighten only.



Figure C

- Place HAC-001 and HAC-002 on the sides of the platform, ensuring the hole is facing outward (Figure D).



Figure D

- Place the casters (locking) under the backside of the platform (the side with HAC-008) on each side (Figure E).



Figure E

- Remove the screw from HAC-030 then remove the spindle foot (Figure F).



Figure F

6. Screw HAC-030 into the welded slot of the platform and return the spindle foot and return the screw (Figure G).



Figure G

7. Tighten all bolts on the platform using a 14mm socket wrench (Figure H).

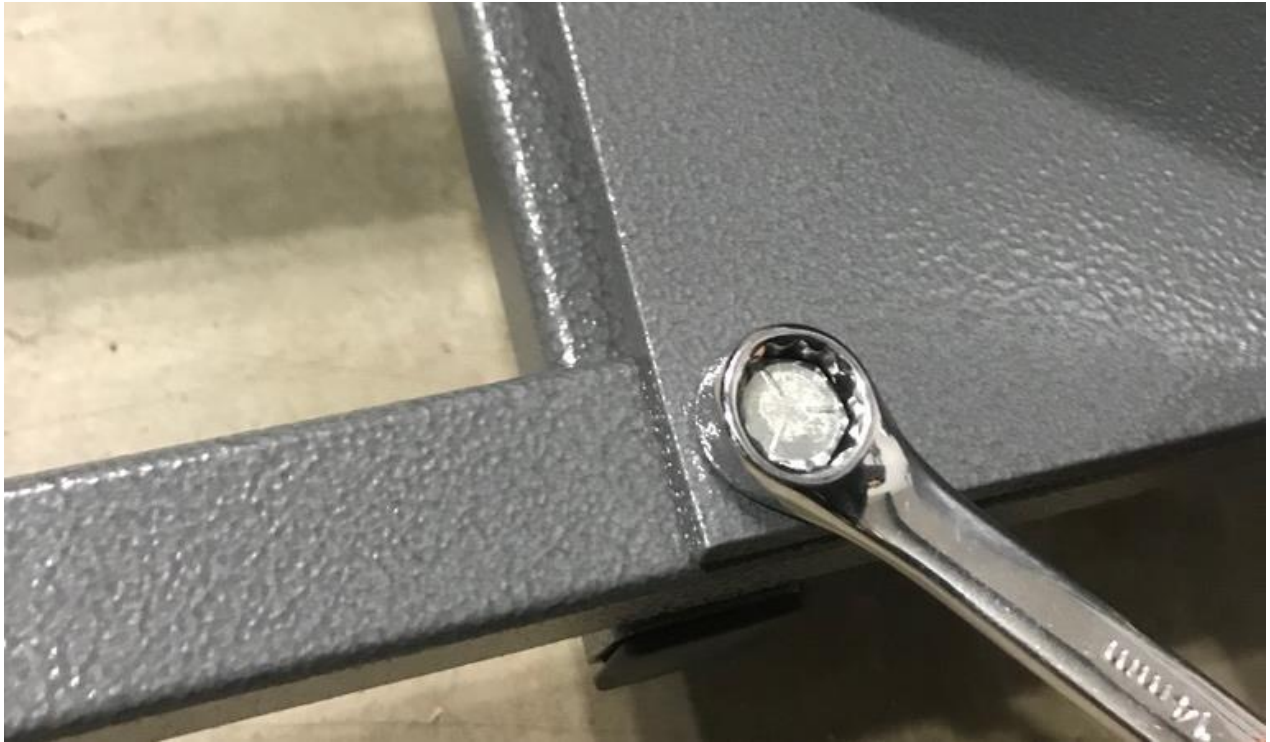


Figure H

8. Place both HAC-006 bars into the slots on HAC-001 and HAC-002, then install casters (Figure I).



Figure I

9. Place HAC-009 into HAC-008 and install two HAC-014 bolts (with HAC-015 nuts) at the bottom mount (Figure J).



Figure J

10. Install HAC-011 over HAC-012 and install in place using HAC-019 bolts and HAC-015 nuts (Figure K).



Figure K

11. Install HAC-013 onto other end of HAC-011s using HAC-019 bolt and HAC-015 nut (Figure L).



Figure L

12. Insert two pulley wheels and pulley clips in the upper corner of HAC-011 (Figure M).



Figure M

13. Insert a pulley wheel and pulley clip onto HAC-013 half way down (Figure N).



Figure N

14. Insert another pulley wheel and pulley clip onto HAC-013 at the very end (Figure O).



Figure O

15. Straighten HAC-013 and place a Quick Release to hold in place (Figure P).



Figure P

16. Attach the winch to the frame (Figure Q) using a 14mm socket wrench.

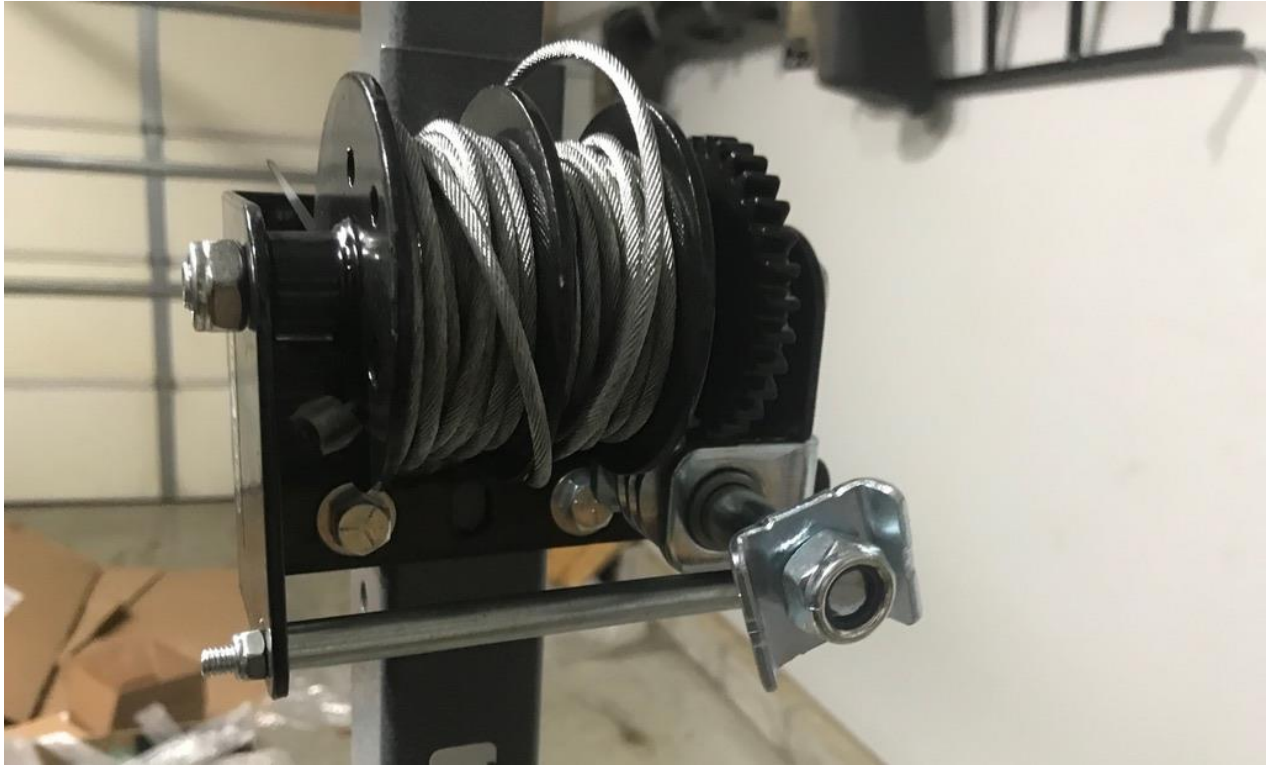


Figure Q

17. Run the left wire through the left side pulley wheel and the middle pulley wheel. Run the right wire through the right side pulley wheel and the far-end pulley wheel.
18. Add two wire clamps to the left wire approximately 10" down and feed the wire back through the wire clamps (Figure R) before tightening using a 7mm socket wrench.



Figure R

19. Add two wire clamps and the hook to the right wire approximately 2 ½" down and feed the wire back through the wire clamps and tighten (Figure S).



Figure S



Before



After

Installation Instructions Written by ExtremeTerrain Customer J. Sandlin 12/07/2017