

GraBars Utility Shelf w/ Quick Fist Clamp
Installation Guide for Jeep Wrangler '07-'18 4-Door JKU

Installation Time: <1 Hour

Tools Required:

- ✓ Box Cutter/Knife
- ✓ Torx 30 Bit

Installation Instructions:

1. Remove the hard top from the vehicle (Figure A).



Figure A

2. Align the driver's side utility shelf with the hard top mounting holes with the shelf facing the front of the vehicle (Figure B).



Figure B

3. Insert one torx bolt into the driver's side utility shelf (Figure C).



Figure C

4. Insert the other torx bolt into the driver's side utility shelf (Figure D).



Figure D

5. Tighten both bolts onto the driver's side utility shelf using a torx 30 bit (Figure E).



Figure E

6. Align the passenger's side utility shelf with the hard top mounting holes (Figure F).



Figure F

7. Insert one torx bolt into the passenger's side utility shelf (Figure G).



Figure G

8. Insert the other torx bolt into the passenger's side utility shelf (Figure H).

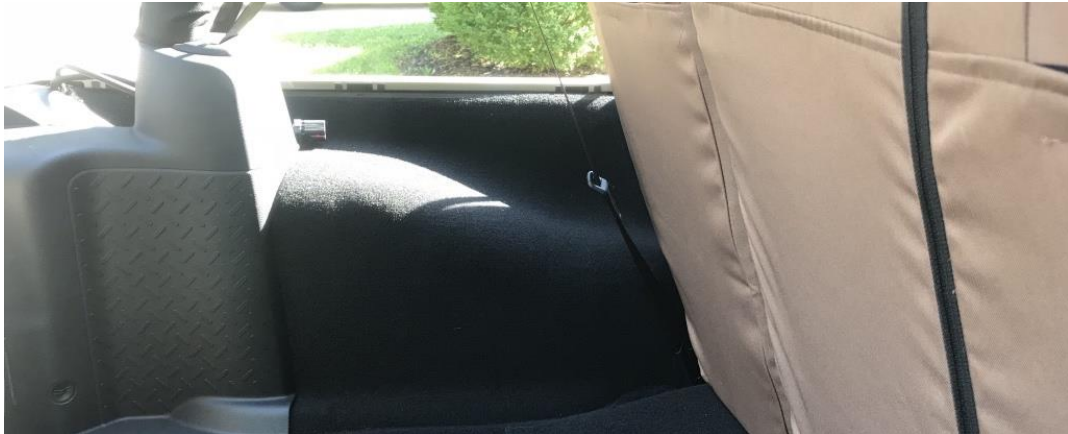


Figure H

9. Tighten both bolts onto the passenger's side utility shelf using a torx 30 bit (Figure I).



Figure I



Before



After

Installation Instructions Written by ExtremeTerrain Customer J. Sandlin 07/17/2018