

GraBars Front Handles (97-06 Wrangler TJ)

Installation Time: 60 Minutes

Tools Required:

- ✓ T40 star bit
- ✓ Phillips Screw Driver
- ✓ Knife

Later model TJ's will require more modification if equipped with the plastic surroundings near the window frame.

Installation Instructions:

1. Before



2. What comes with the GraBars Front Handles (97-06 Wrangler TJ)

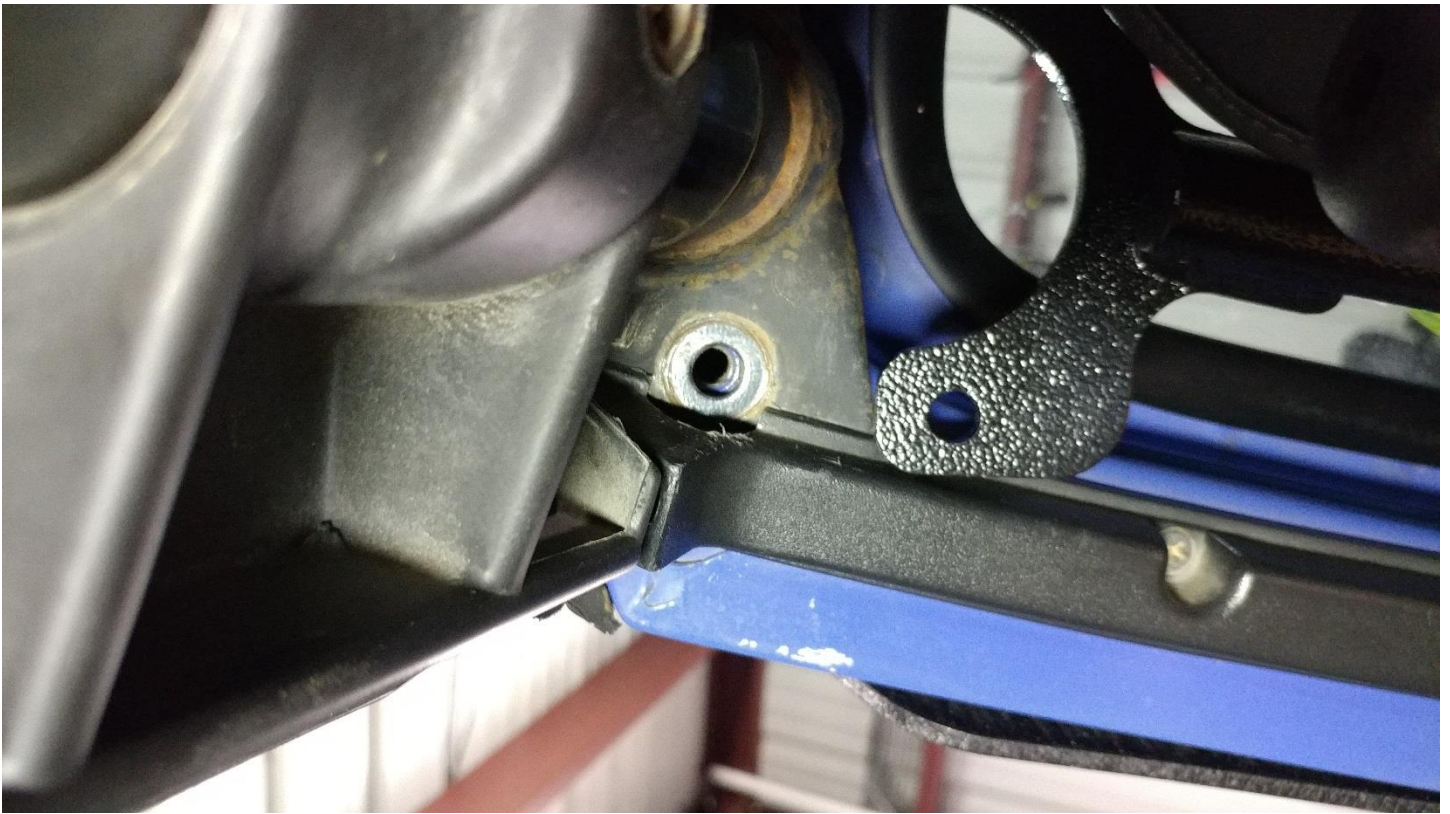


3. GraBars Front Handles (97-06 Wrangler TJ) provided instructions



4. For the installation of GraBars Front Handles both T40 screws will have to be removed. The hole on the trim is round while the GraBars are a larger semi-square. This will require trimming so that the handle can sit flat. +

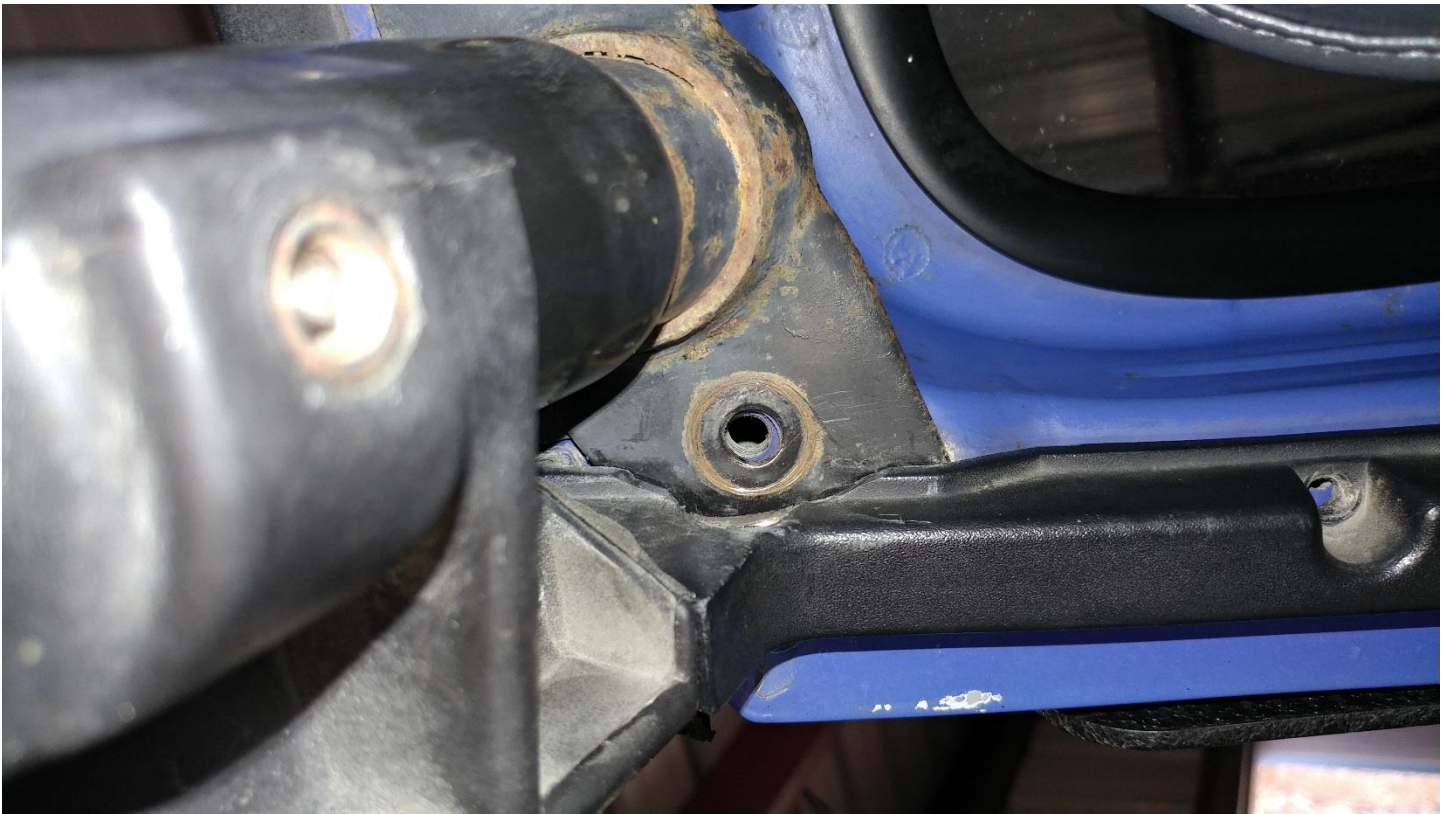




5. Remove the 3 Philips screws holding the trim in place.



6. Using a knife enlarge the area around where the handle will sit. The handle can be used as a template.



7. Install the handle with the 2 T40 factory screws.



8. Installation complete

