

Garvin Adventure Roof Rack Ladder

Installation Guide for Jeep Wrangler '07-'16 2-Door JK

Installation Time: <1 Hour

Tools Required:

- ✓ Box Cutter/Knife
- ✓ Pliers
- ✓ 13mm Socket
- ✓ Socket Wrench

Installation Instructions:

Note: This product requires a pre-existing Garvin Adventure Roof Rack. This product will not work without it.

1. Carefully open the package using a box cutter or knife (Figure A) and pliers. Ensure the ladder and hardware are included and undamaged (Figure B).

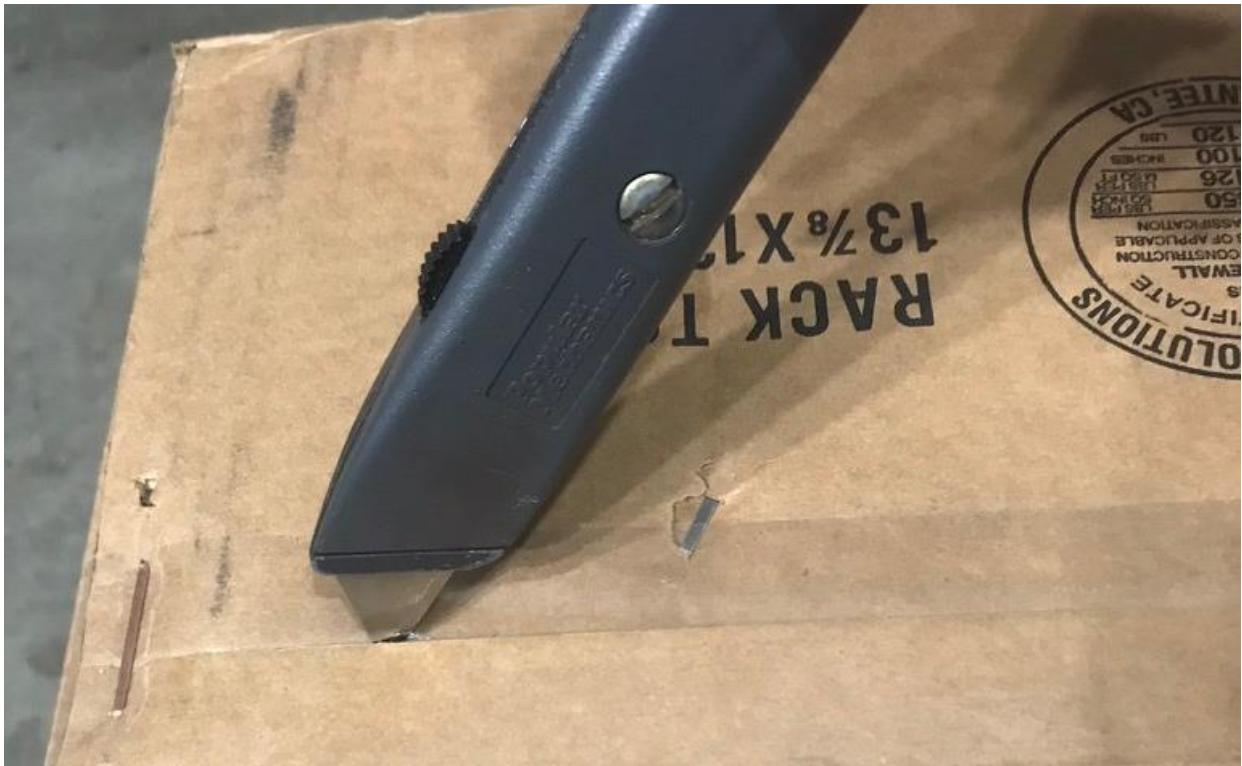


Figure A



Figure B

2. Locate the ladder support brackets on the rear passenger portion of the Garvin Adventure Roof Rack (Figure C).



Figure C

3. Insert two carriage bolts (supplied) through the top portion of the ladder (Figure D).



Figure D

4. Insert the connecting bracket (supplied) to the support bracket closest to the front of the vehicle using a carriage bolt (supplied) and insert the carriage bolts from the top of the ladder into the connecting bracket (front facing) and support bracket (rear facing) (Figure E).



Figure E

5. Place a flat-washer and nylon locknut (supplied) on the underside of all three carriage bolts and hand-tighten (Figure F).



Figure F

6. Insert two carriage bolts through the lower ladder support bracket and the support bracket on the rear passenger side support bar of the roof rack and hand-tighten (Figure G).



Figure G

7. Tighten down all the locknuts using a 13mm socket wrench (Figure H).



Figure H



Before



After

Installation Instructions Written by ExtremeTerrain Customer J. Sandlin 10/24/2017