

Garvin Adventure Rack Crossbar Adapters

Installation Guide for Jeep Wrangler '07-'16 2-Door JK

Installation Time: <1 Hour

Tools Required:

- ✓ Box Cutter/Knife
- ✓ Pliers
- ✓ 13mm Socket
- ✓ Socket Wrench
- ✓ 13mm Wrench

Installation Instructions:

Note: This product requires the Garvin Adventure Rack to have previously been installed.

1. Carefully open the package using a box cutter or knife (Figure A) and pliers (Figure B). Ensure the crossbars and hardware are included and undamaged.



Figure A

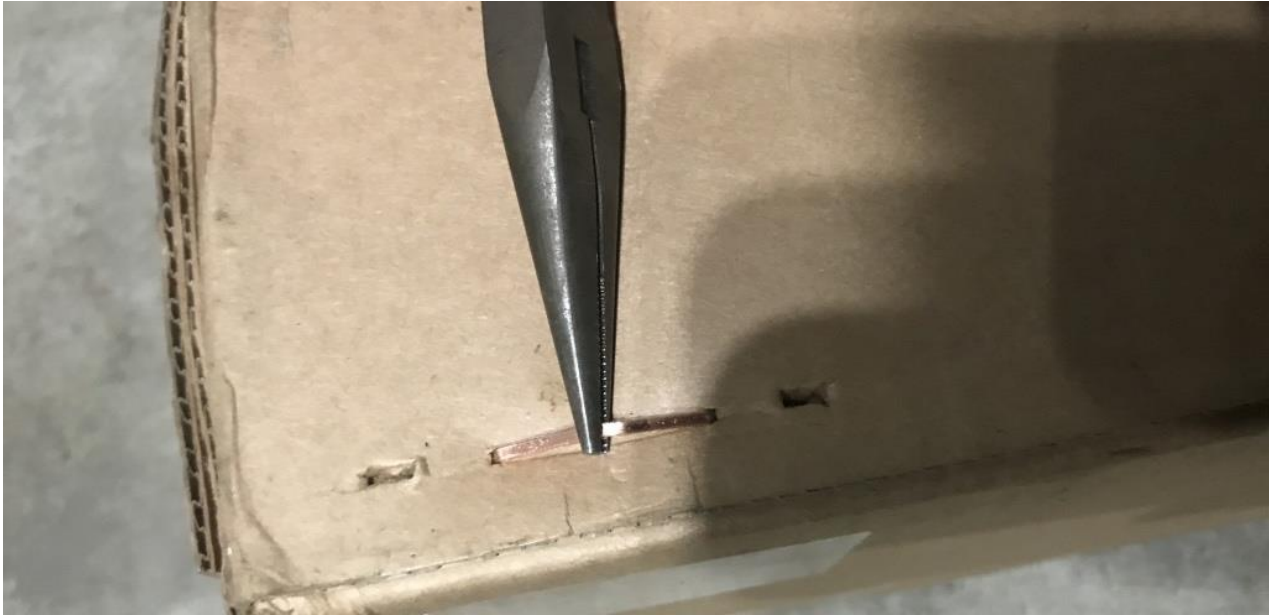


Figure B

2. Place the mounting bracket (with round holes) over the Adventure Rack tube with a mounting support bracket (with square holes) under the same Adventure Rack tube and run a 5/16" x 2" carriage bolt (supplied) through both sides (Figure C).



Figure C

3. Place a 5/16" flatwasher and 5/16" nylon locknut (supplied) over each 5/16" x 2" carriage bolt (Figure D).



Figure D

4. Tighten both locknuts down using a 13mm socket wrench (Figure E).



Figure E

5. Mount another mounting bracket the same distance on the opposite side of the Adventure Rack, following Steps 2-4 (Figure F).



Figure F

6. Place a cross tube (provided) over the top of both mounts and place a mounting support bracket (with square holes) over the cross tube (Figure G).



Figure G

7. Place a 5/16" x 1 3/4" carriage bolt (supplied) through each hole and a 5/16" flatwasher and 5/16" nylon locknut (supplied) on the other end (Figure H). Do the same on the opposite end.



Figure H

8. Tighten the locknuts on both ends using a 13mm wrench (Figure I).

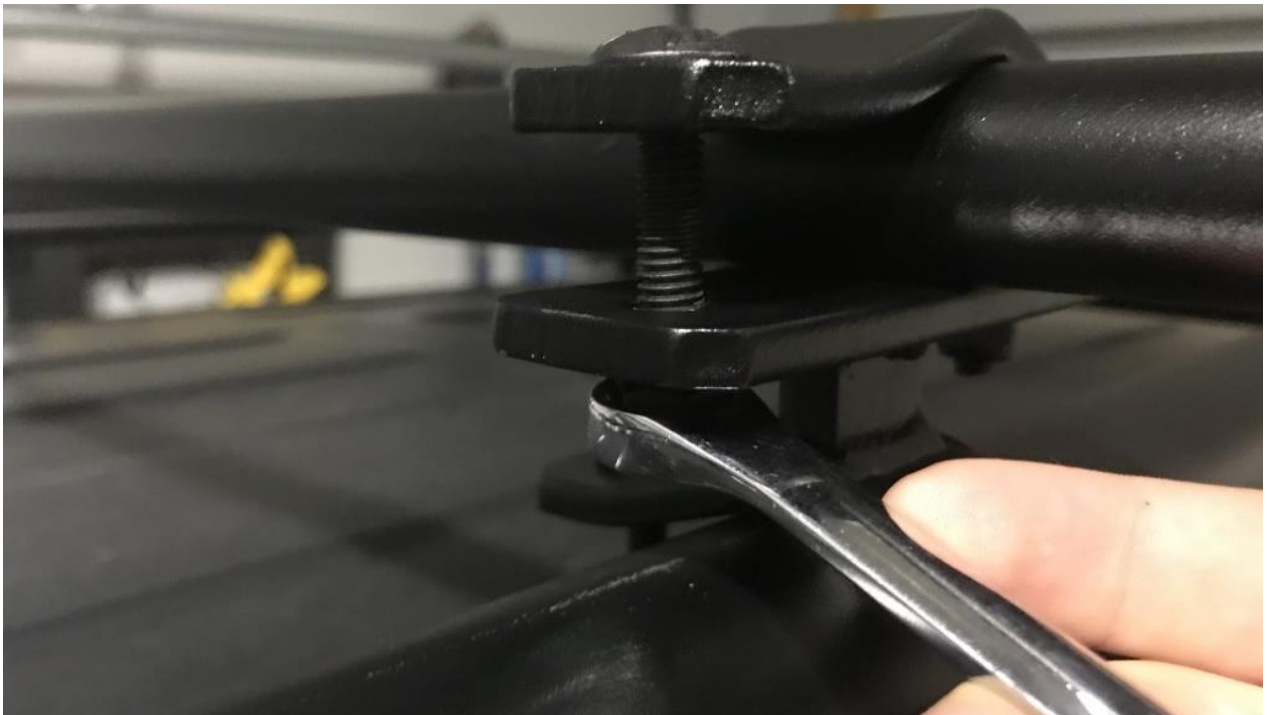


Figure I

9. Add the vinyl end covers (provided) to both sides of the cross tube (Figure J).



Figure J

10. Repeat Steps 2-9 to install the other cross tube.



Before



After

Installation Instructions Written by ExtremeTerrain Customer J. Sandlin 02/12/2018