

Factor 55 FlatLink - Blue

Installation Time: 30 Minutes

Tools Required:

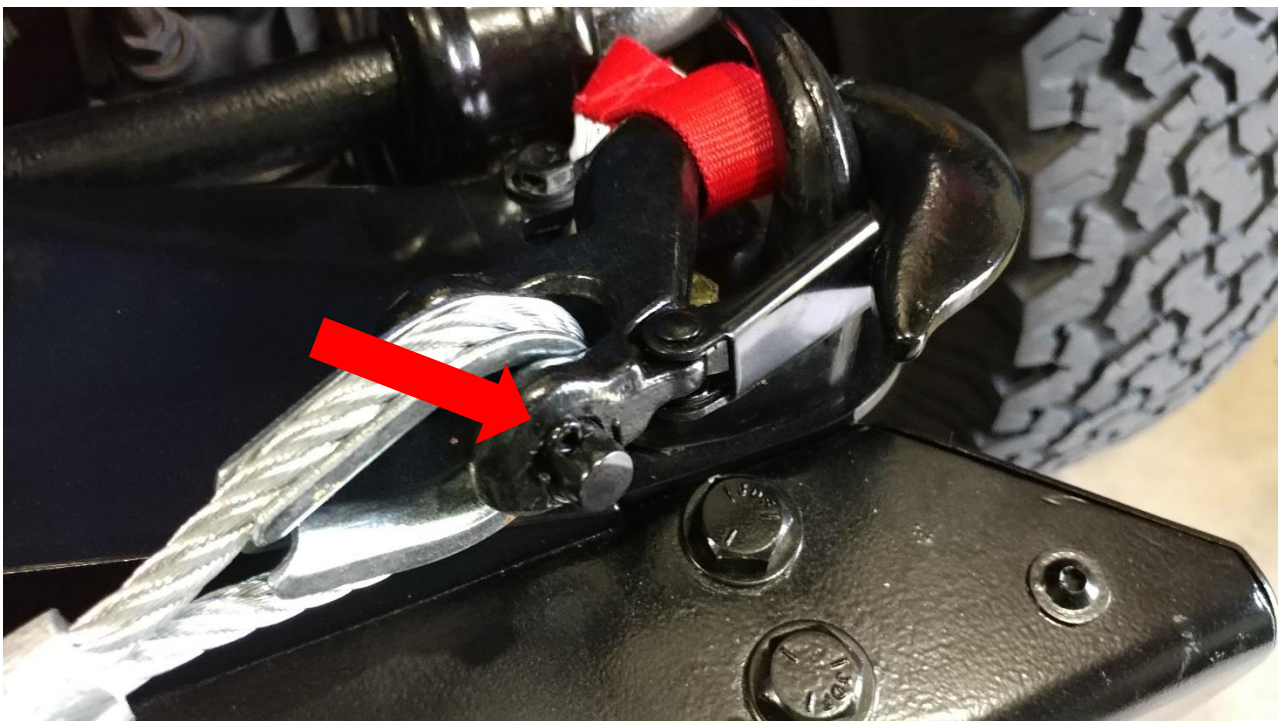
- ✓ Snap Ring Pliers
- ✓ Pliers

Installation Instructions:

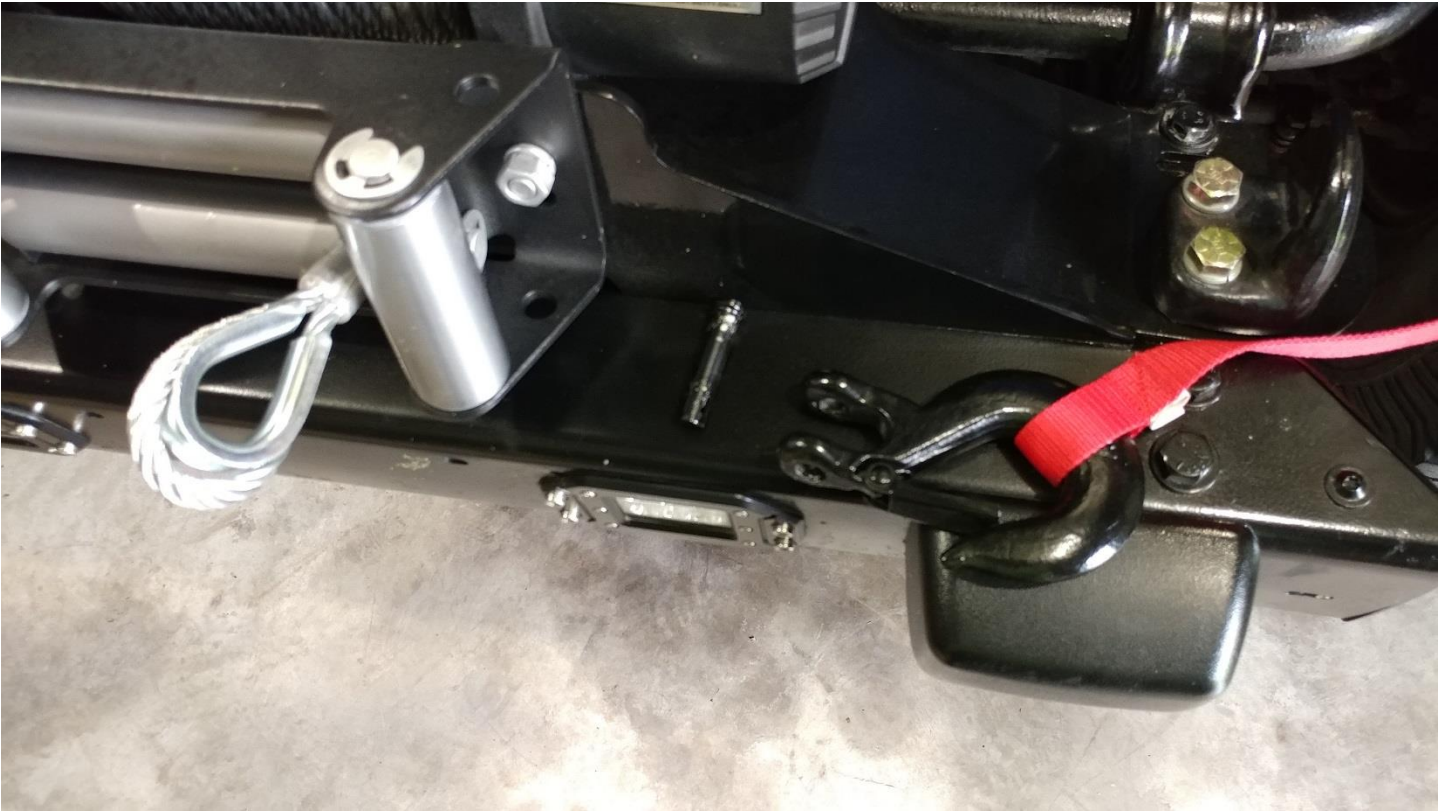
1. Before



2. Using pliers remove the counter pin from the existing winch hook



3. With the counter pin removed, pull the pin and remove the hook from the winch cable.



4. Remove the snap ring from the Factor 55 FlatLink



5. Pull the pin after removing the snap ring



6. Insert the winch cable and slide the pin back into place



7. Reinstall the snap ring



8. Pull in the winch cable using your remote **WATCH YOUR FINGERS**





9. Installation complete

