

Installation Guide for DV8 Off-Road Rear Aluminum Inner Fenders - Raw

Installation Time: 2 Hour

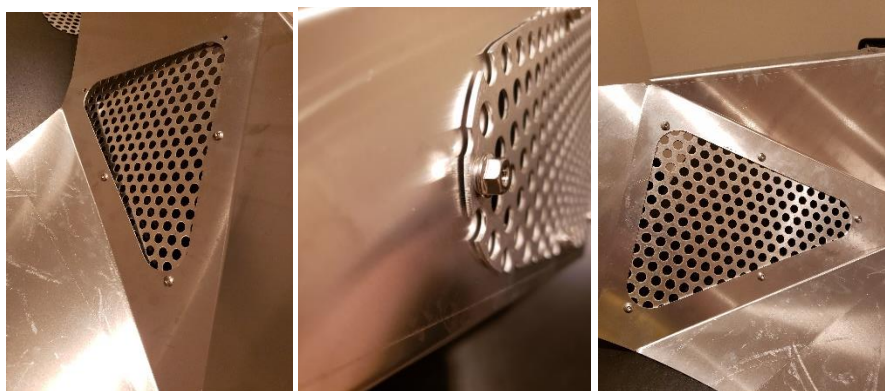
Tools Required

- ✓ Trim removal tool
- ✓ Wrench (3/8")
- ✓ Hex (Allen) Key (1/8")
- ✓ Pliers
- ✓ Floor Jack
- ✓ Jack Stand
- ✓ Torque Wrench

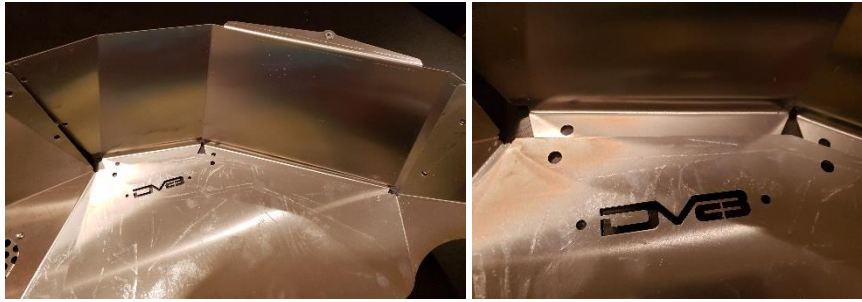
Park the vehicle on a safe and leveled surface and wear protection gear. If you are planning to color match any parts of the inner fender liner with the theme in your JL, you should do so before starting the installation process for better results.

Installation Instructions:

1. Using the provided hardware, install the aluminum meshes on the inner fender panels. The meshes have pre drilled holes that align to the corresponding panel.
 - a. Place the aluminum grill on the back of the lower portion of the inner fender liner.
 - b. Insert the screw from the outward side of the panel so the head of the screw is facing to the visible part of the panel once installed.
 - c. Insert the washer and the nut from the other side and secure loosely.
 - d. A total of 5 screws are needed to secure the grill to the inner fender panel. Once all hardware have been installed, tight them all using the 3/8" wrench and the 1/8" hex key.



- Now install the top portion of the inner fender liner using the provided hardware. Place the top portion of the inner fender liner on top of the lower portion ensuring that the flap on the upper portion is placed below the rear panel of the liner's lower portion.



- Using the 3/8" wrench and the 1/8" hex key, secure both panels using the provided hardware. Start by securing three screws where the rear portion of the panels connect. Then secure the top portion with the additional four screws.



- (Optional) Install the DV8 logo back cover. Tight using the provided hardware.



- Make sure all hardware is tight to prevent from becoming loose with the road vibration.
- Lift the vehicle using the floor jack and place the jack stand in the jack points according to manufacturer suggestion.
- If your vehicle is equipped with factory wheels and lug nuts, use a 22mm socket to remove the tire on the side in which the installation will be performed. A different socket might be needed if aftermarket wheels are installed.

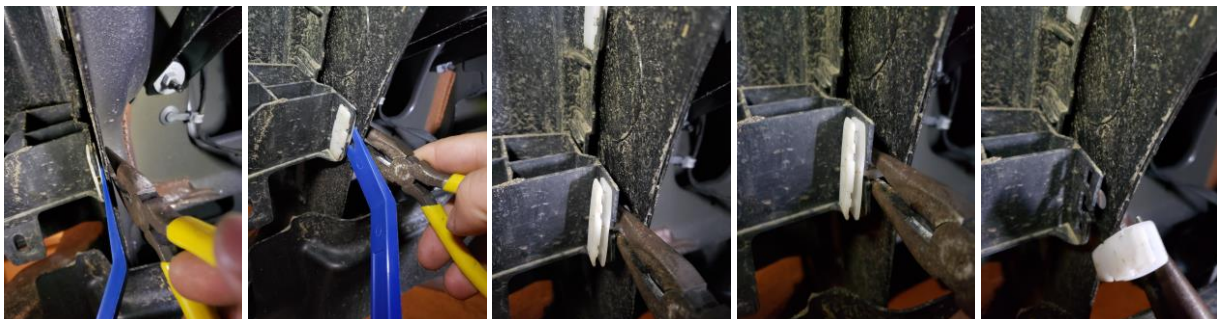
8. Using the trim removal tool, remove the factory installed inner fender liner. There are a total of eight clips to be removed. Three in the rear bottom of the fender, two in the front bottom, two in the top and one in the rear bottom. Place the trim removal tool behind the inner fender liner (Passenger's side shown).



9. Now you can remove the inner fender liner. You might have to maneuver the inner fender out. If needed, use the trim removal tool to lose the inner fender liner from the clips in the outer edge of the factory installed fender.



10. The new inner fender liner will leverage one of the mounting in the body of the vehicle. To enable this, the clip on the rear/lower portion of the fender will need to be removed. Use the trim removal tool and a plier detach the clip from the body of the vehicle.



11. Now the inner fender liner can be installed. Insert the inner fender liner so its edge goes behind the edge of the vehicle's body. Align the three mounting points with the holes in the vehicle's body. You might need to maneuver the inner fender liner for the mounting holes to align.



12. Using the 1/8" hex key and the provided hardware, secure the inner fender liner to the vehicle's body. There are a total of three mounting points.



13. Re-install the wheel and tight to factory specs.



14. Repeat all the steps in the other side.