

DV8 Off-Road Front Aluminum Inner Fenders - Raw
Installation Guide for Jeep Wrangler '07-'16 2-Door JK

Installation Time: 1 Hour

Tools Required:

- ✓ Box Cutter/Knife
- ✓ 10mm Socket
- ✓ Socket Wrench
- ✓ Allen Wrench

Installation Instructions:

1. Carefully open the package using a box cutter or knife (Figure A) and ensure the hardware is included and undamaged.

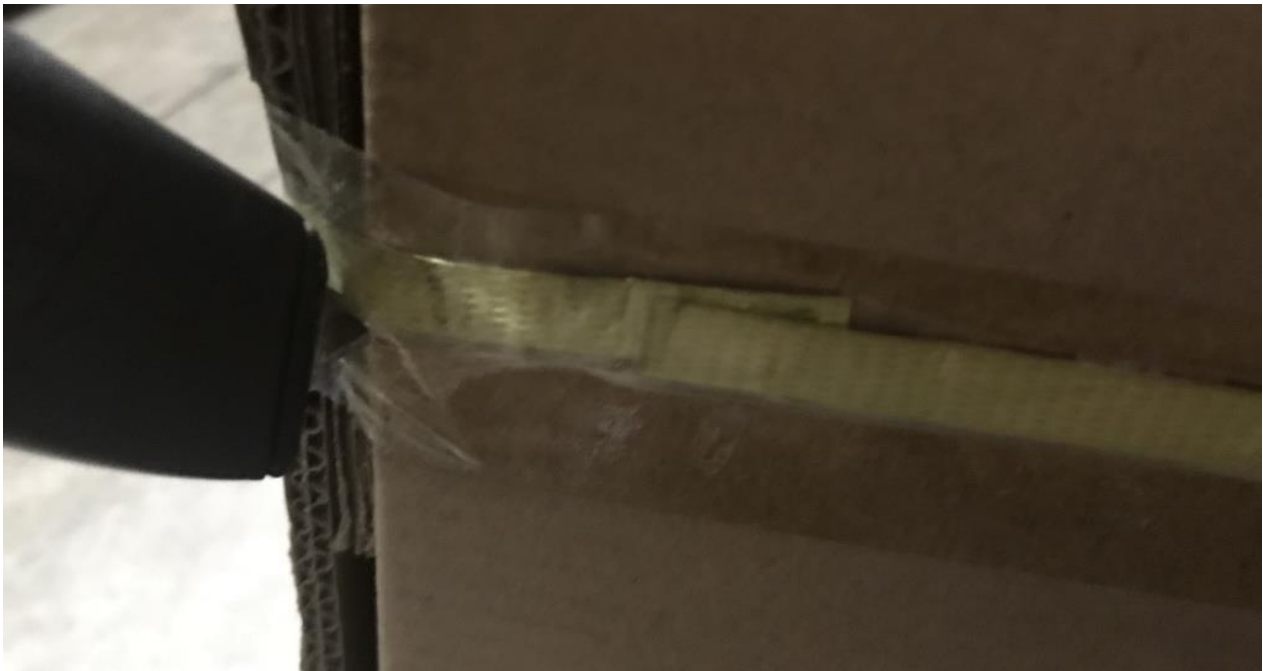


Figure A

2. Remove the factory fender liner using a 10mm socket wrench (Figure B). **Note:** Keep hardware removed.

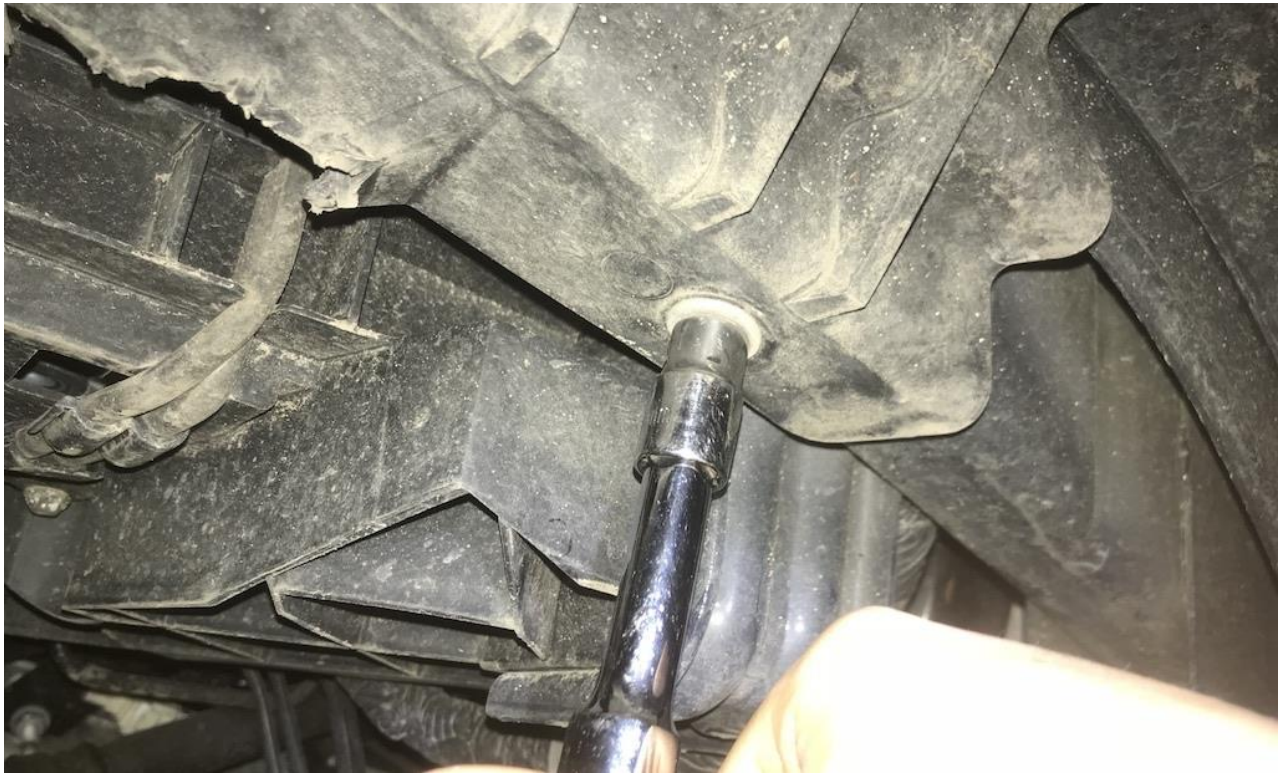


Figure B

3. Mount the solid, inner half of the inner fender first, reusing the 10mm factory bolt removed in Step 2 (Figure C).



Figure C

4. Place the arm (supplied) (side specific) behind the bulkhead with the notched side facing down and toward the engine (Figure D).



Figure D

5. Secure the arm to the liner using the long screw provided and an Allen wrench through the liner hole (Figure E).



Figure E

6. Move the front half of the inner fender into place, beginning with the bottom side first (Figure F).



Figure F

7. Using the factory bolts, mount the front inner fender into place (Figure G).



Figure G

8. Align the two halves by pressing back until the holes line up and inserting two shorter screws (Figure H).



Figure H

9. Tighten the bolts (Figure I).



Figure I

10. Repeat Steps 2-9 on the other side.



Before



After

Installation Instructions Written by Extreme Terrain Customer J. Sandlin 02/28/2018