

Delta Halogen 7 in. Headlight Kit

Installation Guide for Jeep Wrangler '07-'16 2-Door JK

Installation Time: <1 Hour

Tools Required:

- ✓ Box Cutter/Knife
- ✓ Torx 15 Bit

Installation Instructions:

1. Open the hood and pop up the tabs holding the grille in place (Figure A).



Figure A

2. With the tabs removed, pull the grille back and out of the way (Figure B).



Figure B

3. Using a torx 15 bit, remove the four screws from the headlight halo (Figure C).



Figure C

4. Remove the headlight and the halo from its housing (Figure D). Disconnect the headlight from the wiring harness.



Figure D

5. Place the Delta Halogen headlight in its place, connecting the harness to the wiring harness (Figure E).



Figure E

6. Reinstall the four screws removed in Step 3 over the new headlight and halo (Figure F).



Figure F

7. Set the tabs back into place on the grille (Figure G).

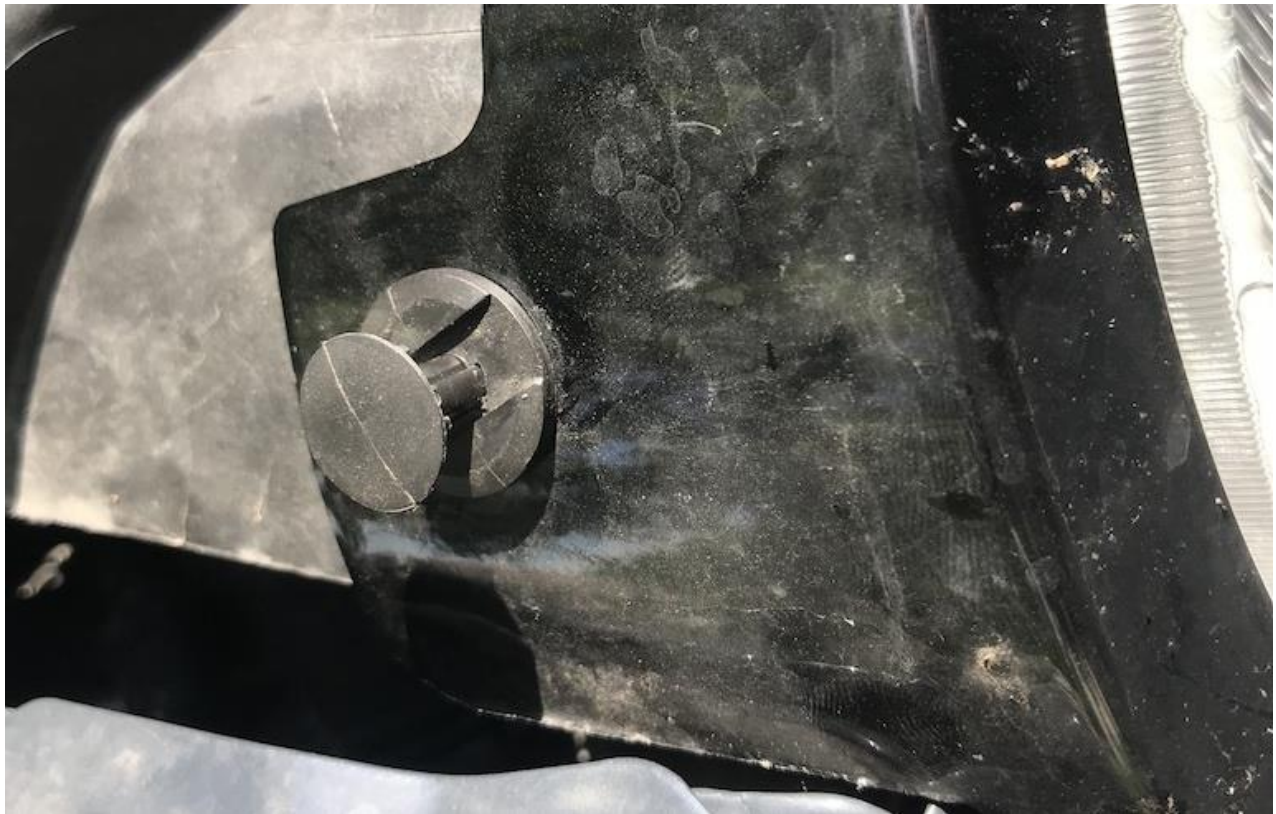


Figure G

8. Once all tabs are in place, press them in to secure the grille back into place (Figure H).



Figure H



Before



After

Installation Instructions Written by ExtremeTerrain Customer J. Sandlin 06/28/2018