

Title of Installation Guide

Installation Time: 30 Minutes

Tools Required:

- ✓ Sockets
- ✓ Philips head screw driver

This light was installed on a rough country 20" hood mount

Installation Instructions:

1. Run the wiring through the firewall. There is a disconnect you can use to make this easier. I used a firewall boot to make this process easier.



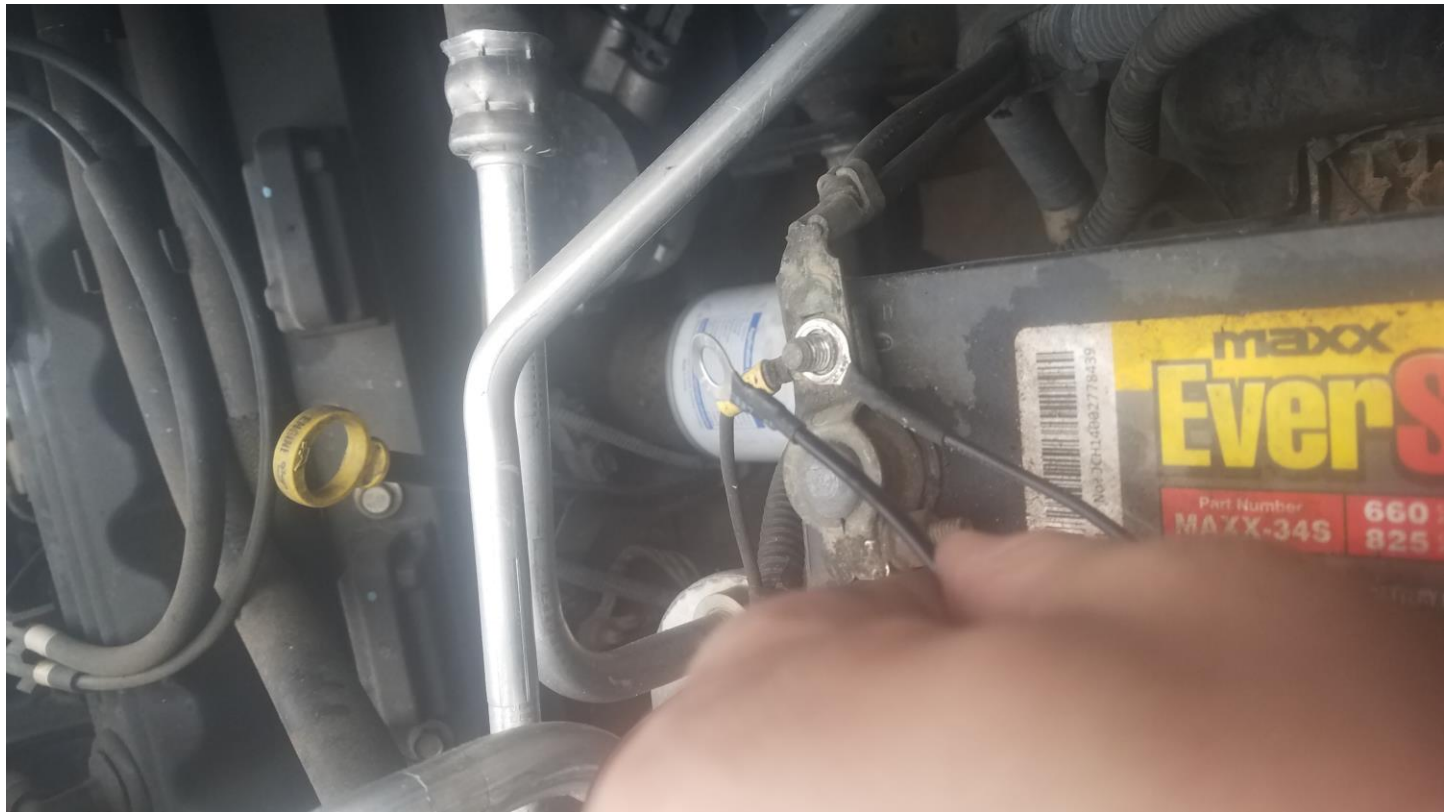
2. Run the rest of the wiring along the back of the engine compartment towards the battery or to another location where the wiring will not be damaged.
- 3.
4. Once the wiring is set in place, connect the light bar to your desired location (or in my case to 20" hood bracket)
 - i. Note: The bracket mount and the light does not fit perfectly but the product has its own mounting bracket and rubber gaskets. If you use the rubber gaskets to connect the light bar it will fit fine.
5. Once connected to the location of choice, place the switch to the location of choice and connect all three prongs. Blue/Black/White. The switch has a LED light on it and if you place the light towards the top, place the

black cable on the top, blue connection to the middle and the white to the bottom of the switch. Place the device where desired.





6. Connect all wiring once light bar, light switch, and securing all wiring devices using zip ties or equivalent and connect the wiring to the batter of the Jeep. Test the light and point it in the desire you would like.







Installation Instructions Written by Extreme Terrain Customer Adam Erlewein 12/13/2018